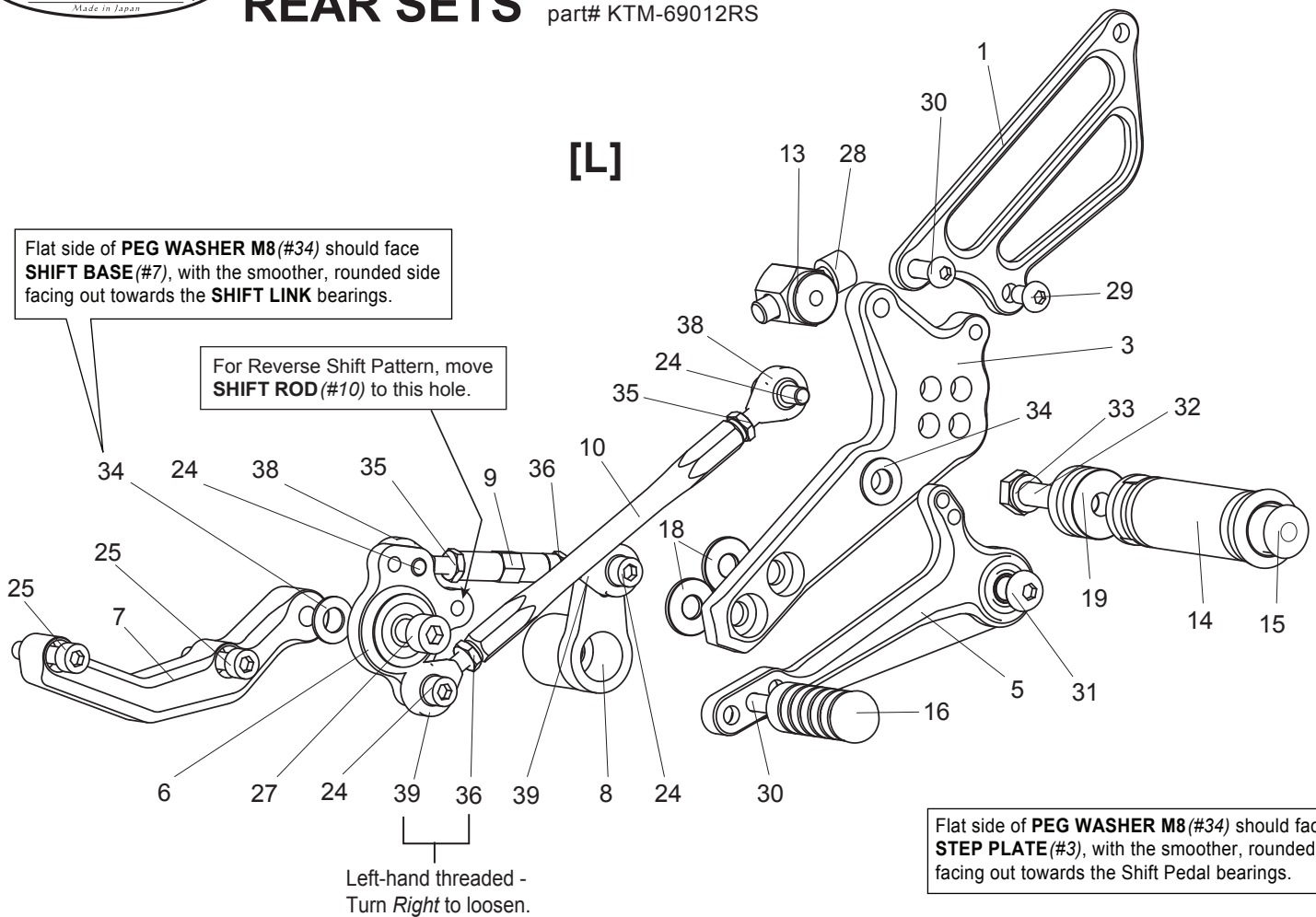


[L]

Flat side of **PEG WASHER M8 (#34)** should face **SHIFT BASE (#7)**, with the smoother, rounded side facing out towards the **SHIFT LINK** bearings.

For Reverse Shift Pattern, move **SHIFT ROD (#10)** to this hole.



Flat side of **PEG WASHER M8 (#34)** should face **STEP PLATE (#3)**, with the smoother, rounded side facing out towards the Shift Pedal bearings.

- | | |
|---|--|
| 1. [L] HEEL GUARD [HG-2L] | 24. SOCKET HEAD M6x18mm [SBT-M618] x 4 |
| 3. [L] STEP PLATE [KTM-69012SP-L] | 25. SOCKET HEAD M6x30mm [SBT-M630] x 2 |
| 5. SHIFT PEDAL [SPD-CPS70R] | 27. SOCKET HEAD M8x25mm [SBT-M825] |
| 6. SHIFT LINK (BK) [SK-1] | 28. SOCKET HEAD M8x30mm [SBT-M830] |
| 7. SHIFT BASE (BK) [SB-KTM1] | 29. BUTTON HEAD M6x10mm [BBT-M610] |
| 8. CHANGE ARM (BK) [CA-KTM] | 30. BUTTON HEAD M6x20mm [BBT-M620] x 2 |
| 9. SHIFT ROD 40 (BK) [SRD-40B] | 31. BUTTON HEAD M8x25mm [BBT-M825] |
| 10. SHIFT ROD 130 [SRD-130] | 32. HEX HEAD M8x40mm [HBT-M840] |
| 13. ANGLE NUT [KTM-69012RS-ANUT] | 33. SPLIT WASHER M8 [SWS-8] |
| 14. FOOT PEG [PEG] | 34. PEG WASHER M8 [PWS-8] x 2 |
| 15. FOOT PEG END CAP [ST-002] | 35. JAM NUT M6 [JNT-6] x 2 |
| 16. PEDAL TIP (DELRIN) [ST-001D18] | 36. REVERSE JAM NUT M6 [JNT-6L] x 2 |
| 18. BASE PLATE COLLAR 2(BK) [BPCLR-2] x 2 | 38. MALE ROD END M6 [RDED-M6] x 2 |
| 19. FOOT PEG COLLAR 15 [PEGCLR-15] | 39. MALE REVERSE ROD END M6 [RDED-M6L] x 2 |

Due to running improvements in the designs of Sato parts, some new replacement parts may look somewhat different than the original parts with the same part #. These slight differences are mostly cosmetic and have no effect on performance.