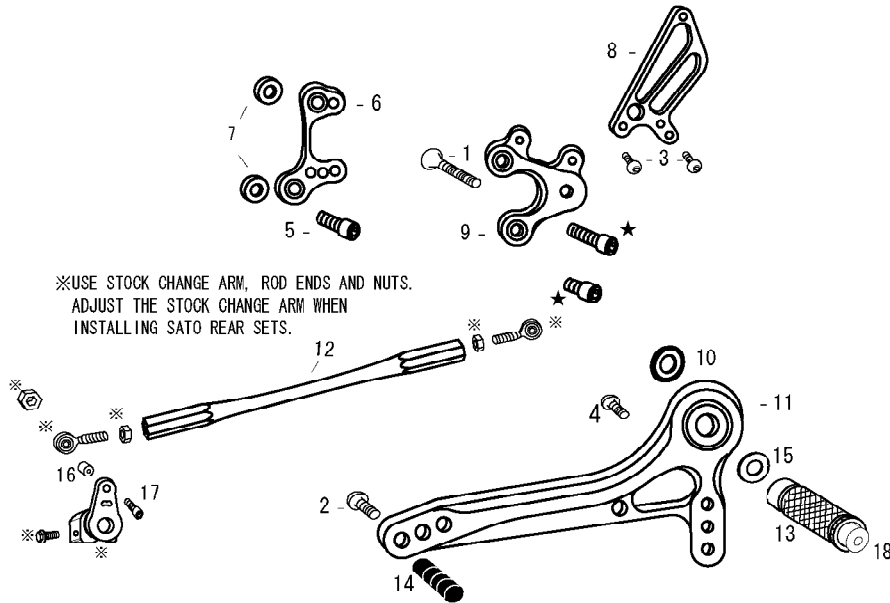


# DUCATI 916/996/998/748 (L)



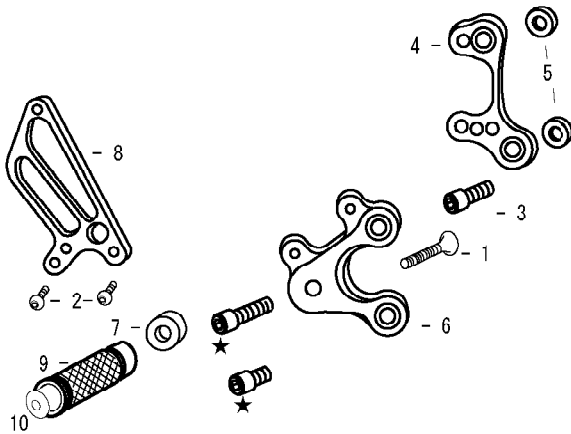
1. FLAT HEAD M8 × 45mm
2. BUTTON HEAD M6 × 20mm
3. BUTTON HEAD M6 × 10mm × 2
4. BUTTON HEAD M6 × 15mm
5. SOCKET HEAD M8 × 20mm (KSK A2-70)
6. BASE PLATE [L]
7. BASE PLATE COLLAR 5 (BK) × 2
8. HEEL GUARD [L] (HG6)
9. STEP PLATE [L]
10. BEARING COLLAR SUS
11. SHIFT PEDAL 70 (SPD2)
12. SHIFT ROD 190
13. FOOT PEG
14. PEDAL TIP DELRIN
15. PEG WASHER M8
16. ROD END COLLAR 6
17. SOCKET HEAD M6 × 25mm
18. FOOT PEG END CAP

★VARIOUS POSITIONS★  
F--fprward  
U--up  
size in mm (milimeter)

① 3F/5U	② 5F/20U	③ 10F/15U	④ 15F/10U



# DUCATI 916/996/998/748 (R)



1. FLAT HEAD M8 × 45mm
2. BUTTON HEAD M6 × 10mm × 2
3. SOCKET HEAD M8 × 20mm (KSK A2-70)
4. BASE PLATE [R]
5. BASE PLATE COLLAR 5 (BK) × 2
6. STEP PLATE [R]
7. FOOT PEG COLLAR 12
8. HEEL GUARD [R] (HG6)
9. FOOT PEG
10. FOOT PEG END CAP

★PLEASE REFER TO THE CHART BELOW FOR THE APPROPRIATE BOLTS.

★VARIOUS POSITIONS★  
F--fprward  
U--up  
size in mm (milimeter)

① 3F/5U	② 5F/20U	③ 10F/15U	④ 15F/10U