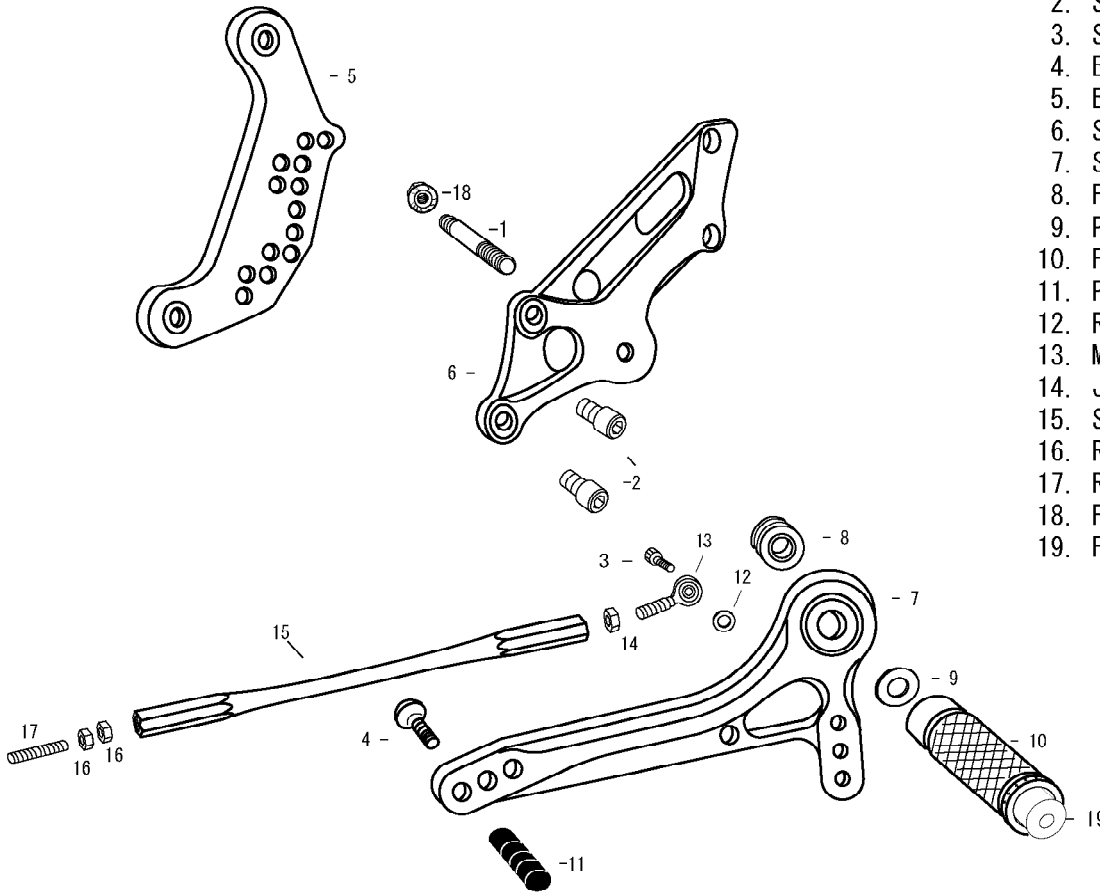


919 (L)

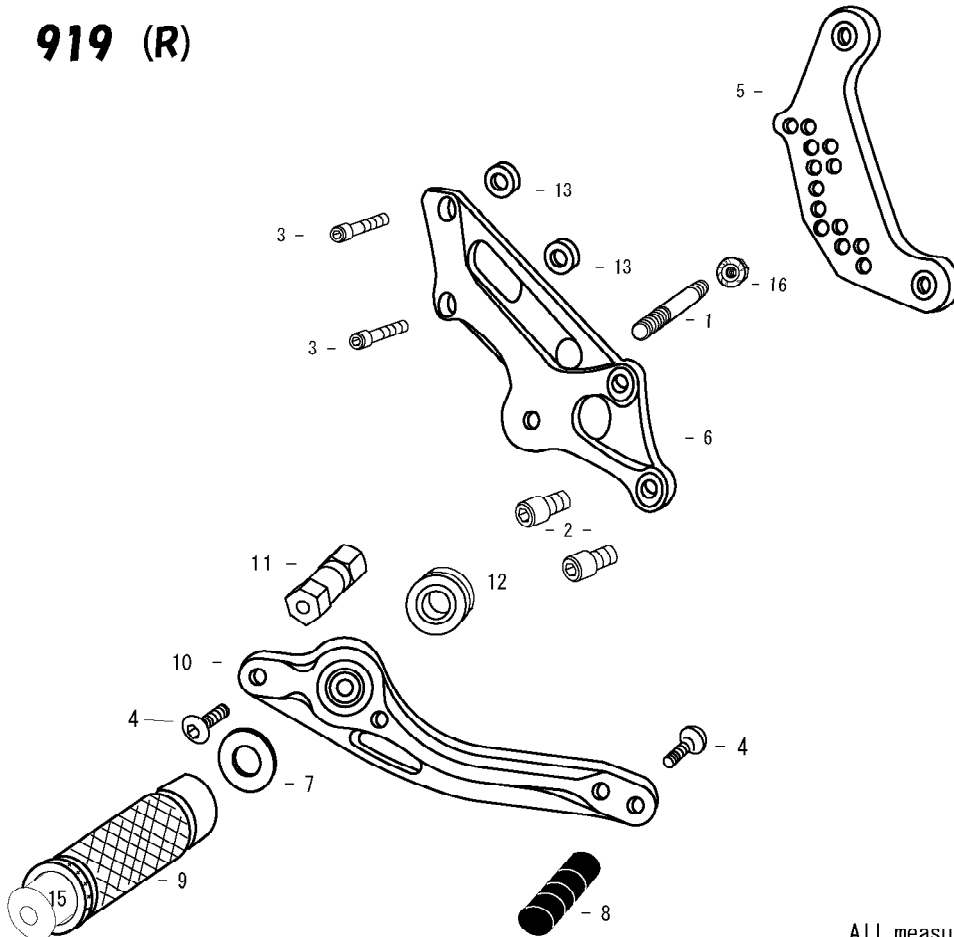


1. STUD BOLT LONG
2. SOCKET HEAD M8×15mm × 2
3. SOCKET HEAD M6×20mm
4. BUTTON HEAD M6×20mm
5. BASE PLATE [L]
6. STEP PLATE [L]
7. SHIFT PEDAL 70 (SPD2)
8. FOOT PEG BEARING COLLAR 10
9. PEG WASHER M8
10. FOOT PEG
11. PEDAL TIP DELRIN
12. ROD END COLLAR 3
13. MALE ROD END M6
14. JAM NUT M6
15. SHIFT ROD 195
16. REVERSE JAM NUT M6
17. REVERSE STUD M6
18. FLANGE NUT M8
19. FOOT PEG END CAP



※ADJUST THE STOCK CHANGE ARM WHEN INSTALLING SATO REAR SETS.

919 (R)



1. STUD BOLT LONG
2. SOCKET HEAD M8×15mm × 2
3. SOCKET HEAD M6×25mm × 2
4. BUTTON HEAD M6×20mm × 2
5. BASE PLATE [R]
6. STEP PLATE [R]
7. PEG WASHER M8
8. PEDAL TIP DELRIN
9. FOOT PEG
10. BRAKE PEDAL 165 (BPD3)
11. BRAKE ROD L2
12. FOOT PEG BEARING COLLAR 10
13. MASTER CYLINDER COLLAR 8 (BK)
14. FLANGE NUT M8
15. FOOT PEG END CAP

POSITIONS		
1	10mm Back	20mm Up
2	10mm Back	30mm Up
3	20mm Back	30mm Up
4	20mm Back	40mm Up
5	30mm Back	40mm Up

All measurements are in relation to stock position (0 mm)