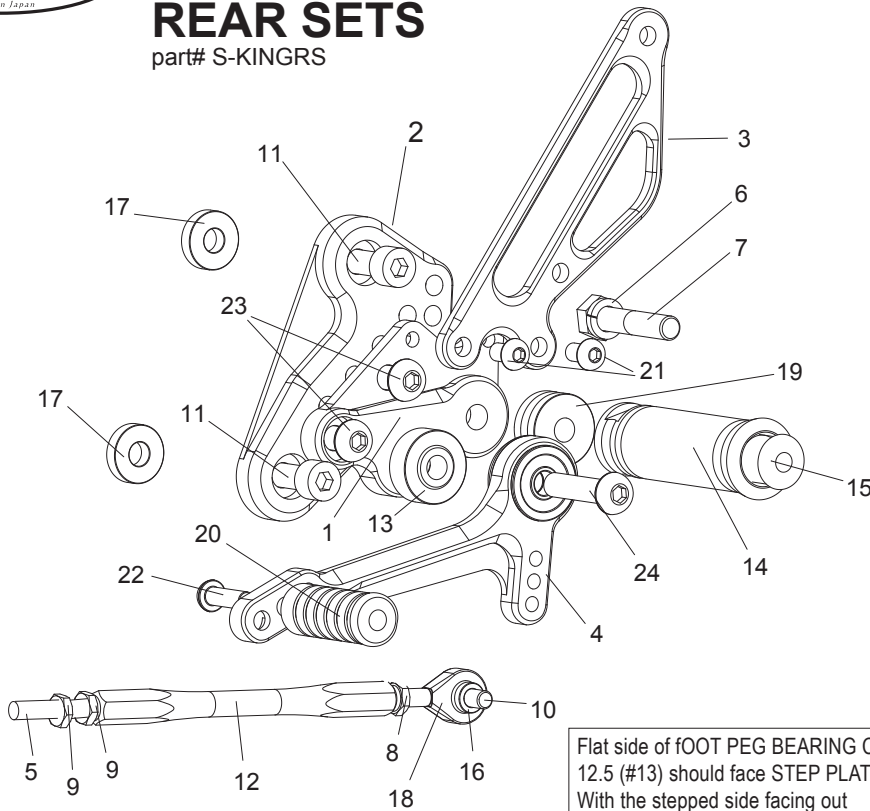


# SUZUKI B-KING REAR SETS

part# S-KINGRS

(L)



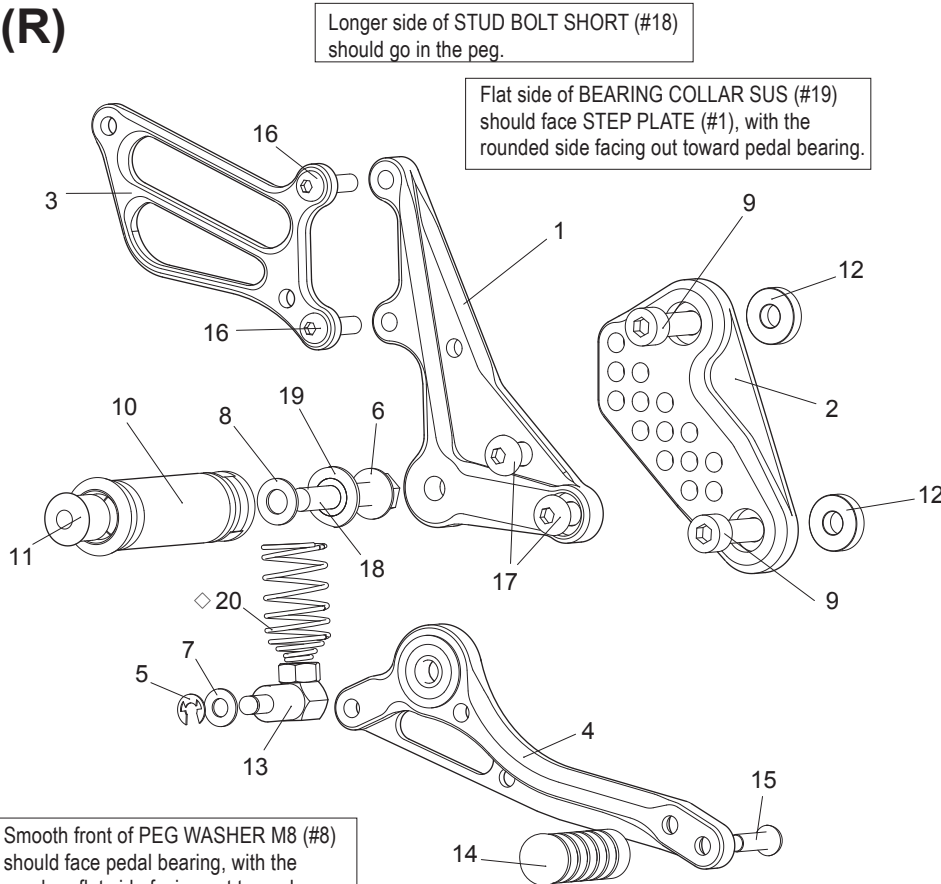
Flat side of FOOT PEG BEARING COLLAR 12.5 (#13) should face STEP PLATE (#1). With the stepped side facing out toward pedal bearing.

※ADJUST THE STOCK CHANGE ARM WHEN INSTALLING SATO REAR SETS.

[L] SIDE

1. STEP PLATE [L]
2. BASE PLATE [L]
3. HEEL GUARD [L] (HG8)
4. SHIFT PEDAL S65 (SPD9)
5. STUD M6
6. SPLIT WASHER M8
7. HEX HEAD M8×40mm
8. REVERSE JAM NUT M6
9. JAM NUT M6 ×2
10. SOCKET HEAD M6×20mm
11. SOCKET HEAD M8×25mm ×2
12. SHIFT ROD 120
13. FOOT PEG BEARING COLLAR 12.5
14. FOOT PEG
15. FOOT PEG END CAP
16. ROD END COLLAR 3
17. BASE PLATE COLLAR 5(BK) ×2
18. MALE REVERSE ROD END M6
19. FOOT PEG COLLAR 12
20. PEDAL TIP [DELRIN]
21. BUTTON HEAD M6×10mm ×2
22. BUTTON HEAD M6×20mm
23. BUTTON HEAD M8×15mm ×2
24. BUTTON HEAD M8×35mm

(R)



Longer side of STUD BOLT SHORT (#18) should go in the peg.

Flat side of BEARING COLLAR SUS (#19) should face STEP PLATE (#1), with the rounded side facing out toward pedal bearing.

Smooth front of PEG WASHER M8 (#8) should face pedal bearing, with the rougher, flat side facing out toward peg.

**P-1.25 brake light switch included.**

[R] SIDE

1. STEP PLATE [R]
2. BASE PLATE [R]
3. HEEL GUARD [R] (HG13)
4. BRAKE PEDAL 150 (BPD7)
5. E CLIP M6
6. FLANGE NUT M8
7. PLAIN WASHER M6
8. PEG WASHER M8
9. SOCKET HEAD M8×25mm ×2
10. FOOT PEG
11. FOOT PEG END CAP
12. BASE PLATE COLLAR 5(BK) ×2
13. BRAKE ROD M40
14. PEDAL TIP [DELRIN]
15. BUTTON HEAD M6×20mm
16. BUTTON HEAD M6×25mm ×2
17. BUTTON HEAD M8×15mm ×2
18. STUD BOLT SHORT
19. BEARING COLLAR SUS
- ◇20. RETURN SPRING L40 (OPTION)

POSITIONS

	5mm Up	10mm Back
1	5mm Up	10mm Back
2	5mm Up	20mm Back
3	15mm Up	10mm Back
4	15mm Up	20mm Back
5	15mm Up	30mm Back
6	25mm Up	20mm Back
7	25mm Up	30mm Back
8	35mm Up	30mm Back

All measurements are in relation to stock position (0 mm)