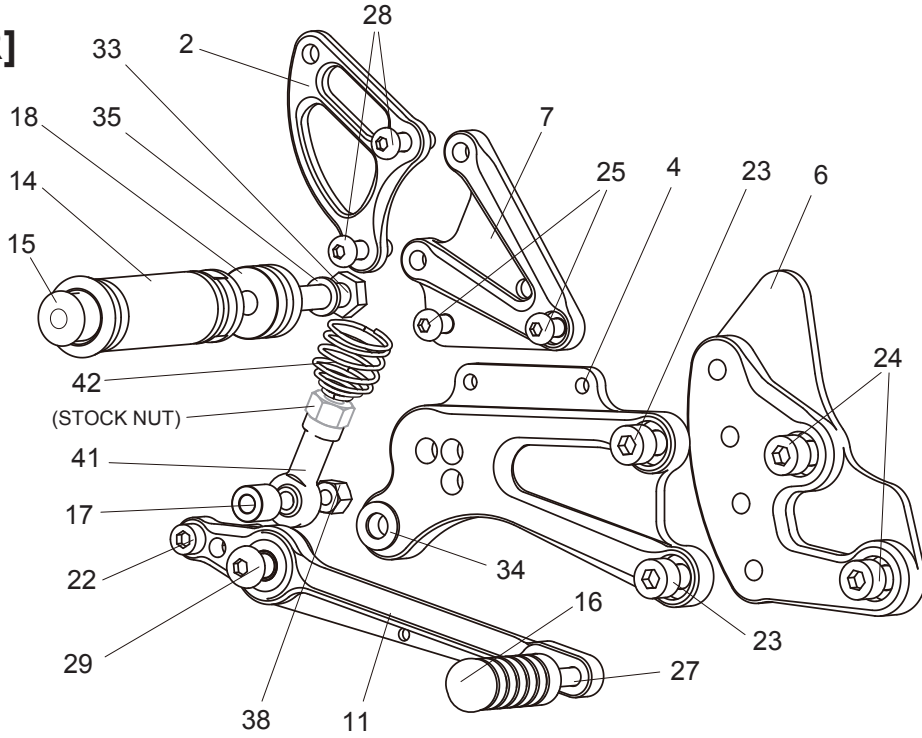


BMW R1200R / RS ('15-) REAR SETS (part# BMW-R12RS)

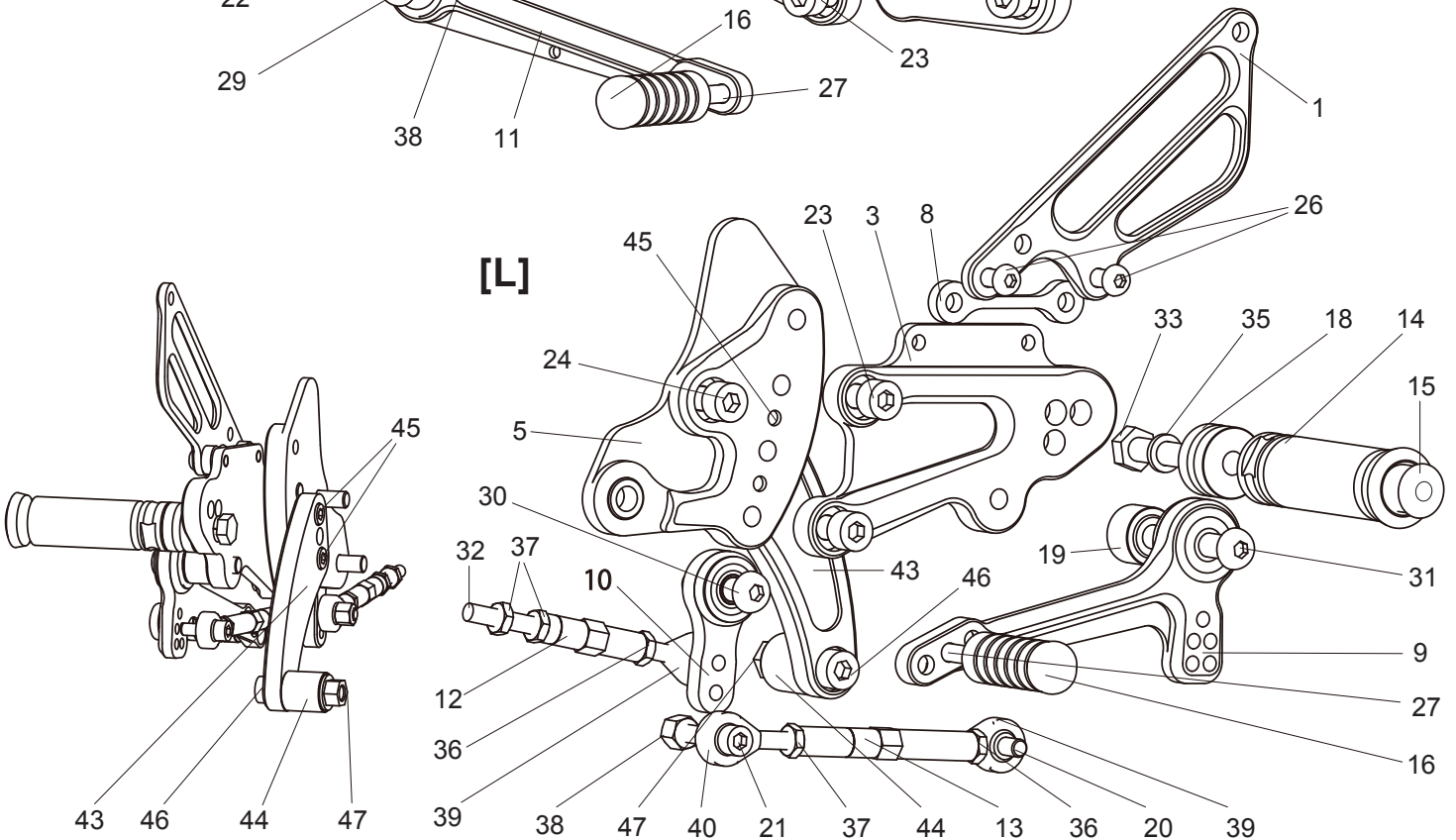
PEG POSITIONS		
1*	47.5mm Back	22mm Up
2*	47.5mm Back	32mm Up
3*	57.5mm Back	32mm Up
4	52.5mm Back	44mm Up
5	52.5mm Back	54mm Up
6	62.5mm Back	54mm Up

[R]



* NOTE: On 2015-16 models, If using the lowest mounting position on the Base Plate (Positions 1-3), it may be necessary to adjust the shift pedal angle so it sits higher at the tip so it doesn't interfere with the side stand during shifts. On the 2017 model, lowest Base Plate position is not recommended, and in the higher position (Position 4-6), care must be taken while installing to avoid interference issues during downshifts to first.

[L]



- | | | | |
|---------------------------------|---------------------------------|------------------------------|-------------------------------|
| 1. [L] HEEL GUARD [HG-4L] | 13. SHIFT ROD 70 (BK) [SRD-70B] | 25. BUTTON HEAD M6x10mm (x2) | 37. REVERSE JAM NUT M6 (x3) |
| 2. [R] HEEL GUARD [HG-22R] | 14. FOOT PEG (x2) | 26. BUTTON HEAD M6x15mm (x2) | 38. LOCK NUT M6 (x2) |
| 3. [L] STEP PLATE | 15. FOOT PEG END CAP (x2) | 27. BUTTON HEAD M6x20mm (x2) | 39. MALE ROD END M6 (x2) |
| 4. [R] STEP PLATE | 16. PEDAL TIP (DELRIN) (x2) | 28. BUTTON HEAD M6x25mm (x2) | 40. REVERSE MALE ROD END M6 |
| 5. [L] BASE PLATE (BK) | 17. ROD END COLLAR 12 (BK) | 29. BUTTON HEAD M8x25mm | 41. FEMALE ROD END 6-M8 |
| 6. [R] BASE PLATE (BK) | 18. PEG COLLAR 15 (x2) | 30. BUTTON HEAD M8x35mm | 42. RETURN SPRING 40 [RS-RSP] |
| 7. MASTER STAY | 19. BEARING COLLAR 13 (BK) | 31. BUTTON HEAD M8x40mm | 43. STAND STOPPER (BK) |
| 8. HEEL GUARD STAY (BK) | 20. SOCKET HEAD M6x18mm | 32. REVERSE STUD M6 | 44. COLLAR 20-8 (BK) |
| 9. SHIFT PEDAL [SPD-0912] | 21. SOCKET HEAD M6x35mm | 33. HEX BOLT M8x40mm (x2) | 45. SOCKET HEAD M6x15mm (x2) |
| 10. SHIFT LINK (BK) | 22. SOCKET HEAD M6x40mm | 34. PEG WASHER M8 | 46. SOCKET HEAD M8x35mm |
| 11. BRAKE PEDAL [BPD-HBP180] | 23. SOCKET HEAD M8x15mm (x4) | 35. SPLIT WASHER M8 (x2) | 47. FLANGE LOCK NUT M8 |
| 12. SHIFT ROD 40 (BK) [SRD-40B] | 24. SOCKET HEAD M8x20mm (x3) | 36. JAM NUT M6 (x2) | |