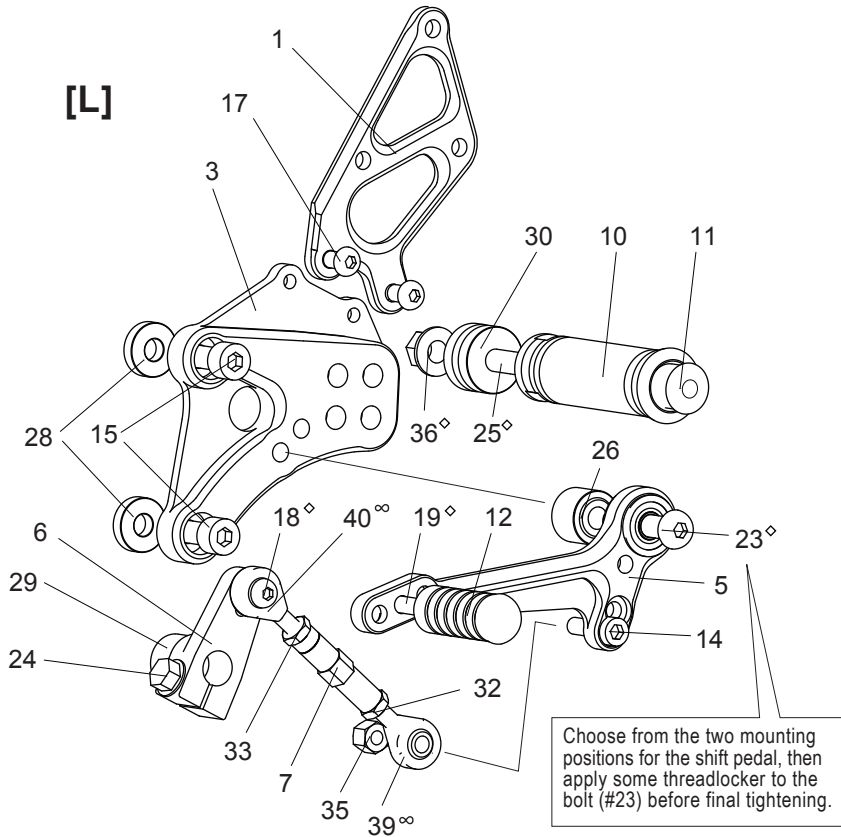
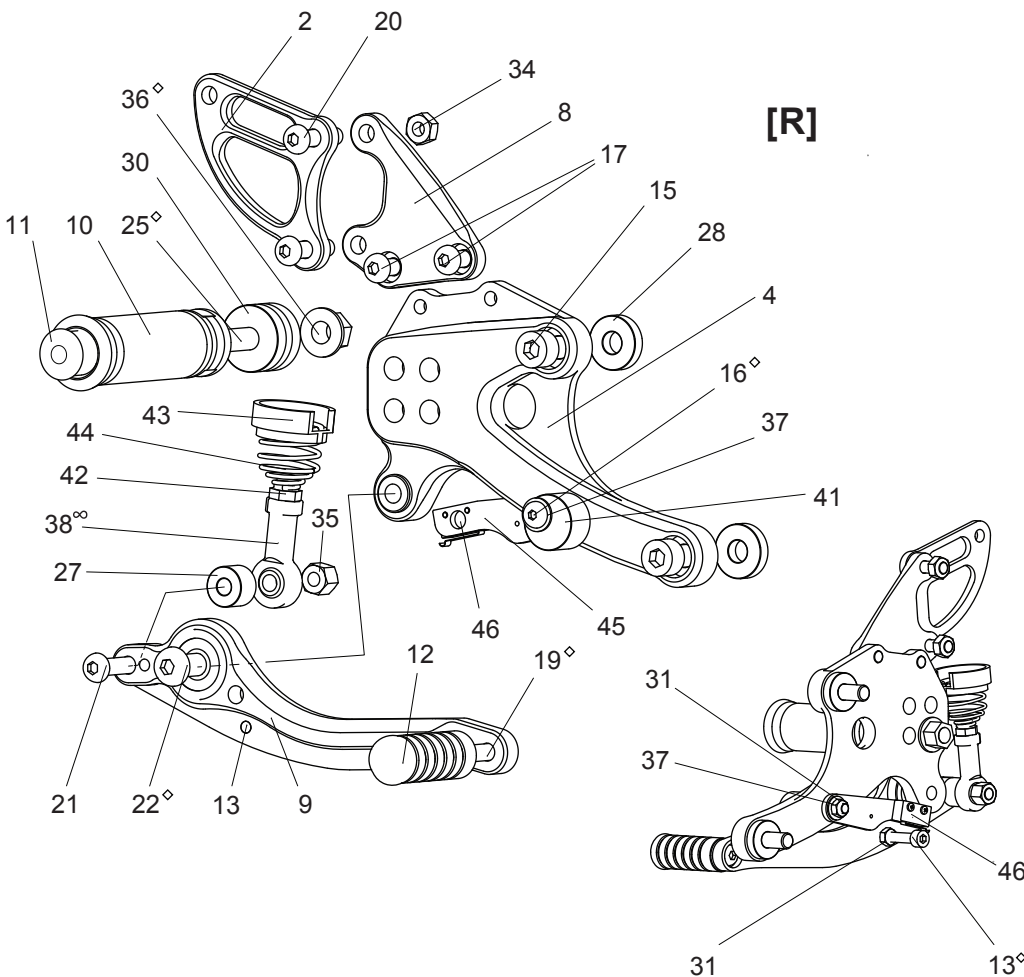


BMW RnineT ('14-) REAR SETS (part# BMW-R9TRS)

[L]



[R]



1. (L) HEEL GUARD [HG-19L]
2. (R) HEEL GUARD [HG-11R]
3. (L) STEP PLATE [BMW-R9TSP-L]
4. (R) STEP PLATE [BMW-R9TSP-R]
5. SHIFT PEDAL SCP55 [SPD-SCP55]
6. SHIFT ARM (BK) [CA-4]
7. SHIFT ROD 40 (BK) [SRD-40B]
8. MASTER BASE [BMW-R9TMB]
9. BRAKE PEDAL 165-30 [BPD-165-30]
10. FOOT PEG [PEG] (x2)
11. FOOT PEG END CAP [ST-002] (x2)
12. PEDAL TIP (DELRIN) [ST-001D] (x2)
13. SOCKET HEAD M5x25mm [SBT-M525]
14. SOCKET HEAD M6x22mm [SBT-M622]
15. SOCKET HEAD M8x25mm [SBT-M825] (x4)
16. BUTTON HEAD M5x35mm [BBT-M535]
17. BUTTON HEAD M6x10mm [BBT-M610] (x4)
18. BUTTON HEAD M6x18mm [BBT-M618]
19. BUTTON HEAD M6x20mm [BBT-M620] (x2)
20. BUTTON HEAD M6x25mm [BBT-M625] (x2)
21. BUTTON HEAD M6x35mm [BBT-M635] (x2)
22. BUTTON HEAD M8x25mm [BBT-M825]
23. BUTTON HEAD M8x40mm [BBT-M840]
24. FLANGE HEAD M6x20mm [FGBT-M620]
25. STUD BOLT M8x50 [STBT-50] (x2)
26. BEARING COLLAR 15SB [PEGBGCLR-15SB]
27. COLLAR 10-6 [RDEDCLR-10] (BK)
28. COLLAR 5 (BK) [BPCLR-5] (x4)
29. SHIFT SPINDLE SPACER (BK)
30. PEG COLLAR 15 [PEGCLR-15] (x2)
31. NUT M5 [NUT-5] (x2)
32. JAM NUT M6 [JNT-6]
33. REVERSE JAM NUT M6 [JNT-6L]
34. NUT M6 [NUT-6] (x2)
35. LOCK NUT M6 [LNT-6] (x2)
36. FLANGE NUT M8 [FNT-8] (x2)
37. WASHER M5 [WS-5] (x2)
38. FEMALE ROD END M6 [RDED-F6]
39. MALE ROD END M6 [RDED-M6]
40. REVERSE MALE ROD END M6 [RDED-M6L]
41. PEDAL STOPPER (DELRIN) [BPD-STOPPER]
42. SPRING SEAT M6 [NUT-SPS6]
43. RETURN SPRING COLLAR b
44. RETURN SPRING 20 [RS-RSP2]
45. SWITCH BASE [BMW-R9TSB]
46. MICROSWITCH [BSW-MICRO]

STUD M6x70 (not pictured)
(fits at stock Shift Selector Rod,
use for stock shift pattern)

◊ We recommend applying some threadlocker (such as Loctite or Vibratite) to these bolts. This should help prevent the parts from vibrating their way loose during a ride.

∞ Lubricate regularly