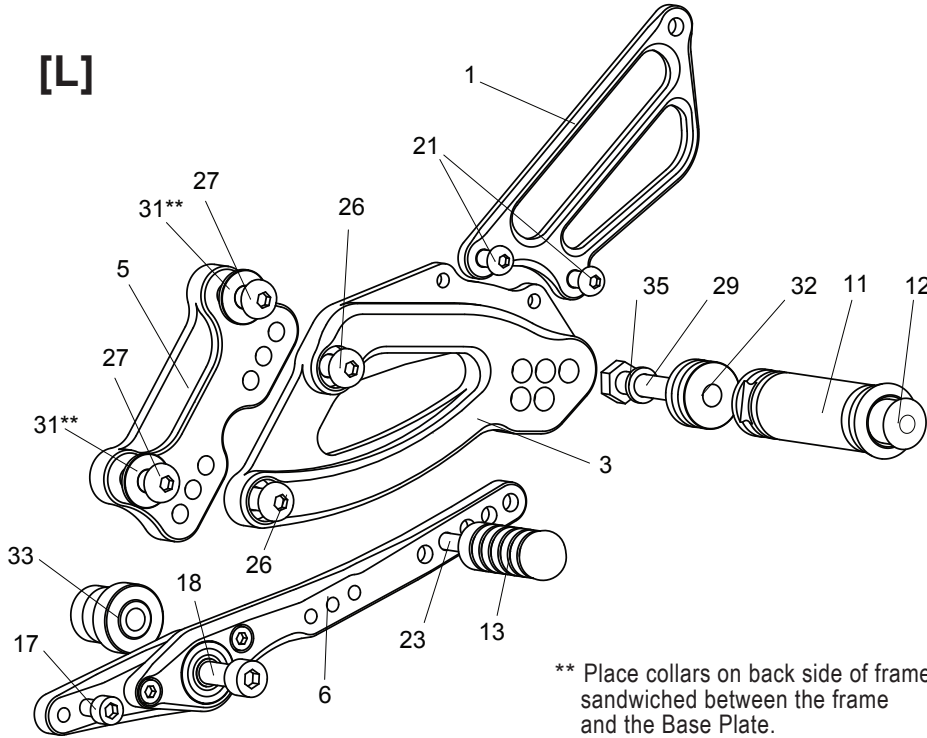


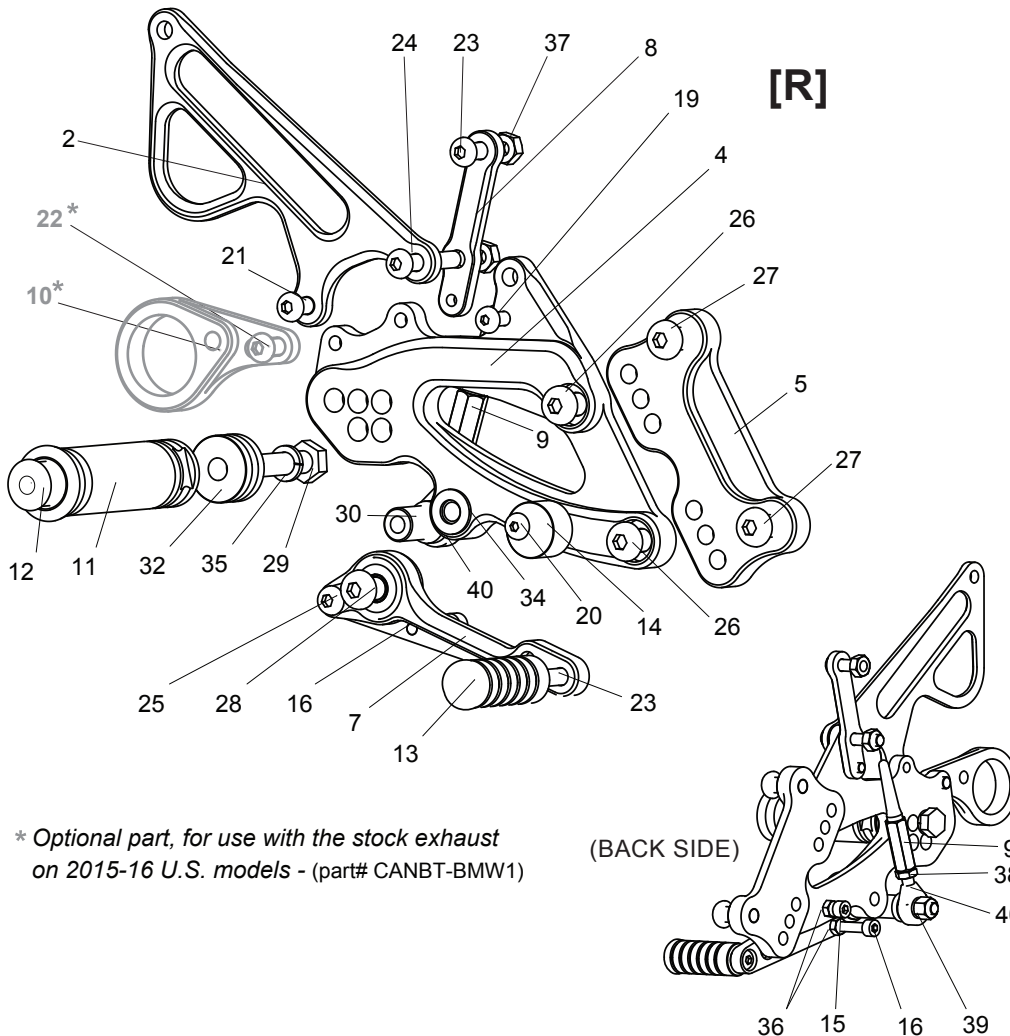
# BMW S1000RR ('15-) REAR SETS (part# BMW-S115RS)

[L]



\*\* Place collars on back side of frame, sandwiched between the frame and the Base Plate.

[R]



(BACK SIDE)

1. [L] HEEL GUARD [HG-2L]
  2. [R] HEEL GUARD [HG-12R]
  3. [L] STEP PLATE [BMW-S115SP-L]
  4. [R] STEP PLATE [BMW-S115SP-R]
  5. BASE PLATE (BK) [BMW-S115BP] x 2
  6. SHIFT PEDAL (BK) [SPD-CP017B]
  7. BRAKE PEDAL [BPD-15]
  8. MASTER BASE (BK) [BMW-S115MB]
  9. PUSH ROD 60 [PRD-60]
  10. EXHAUST HANGER BRACKET (BK)\*
  11. FOOT PEG [PEG] x 2
  12. FOOT PEG END CAP [ST-002] x 2
  13. PEDAL TIP [DELRIN] [ST-001D] x 2
  14. PEDAL STOPPER [DELRIN] [BPD-STOPPER]
  15. SOCKET HEAD M5x10mm [SBT-M510]
  16. SOCKET HEAD M5x25mm [SBT-M525]
  17. SOCKET HEAD M6x18mm [SBT-M618]
  18. SOCKET HEAD M8x65mm [SBT-M865]
  19. BUTTON HEAD M5x15mm [BBT-M515]
  20. BUTTON HEAD M5x20mm [BBT-M520]
  21. BUTTON HEAD M6x10mm [BBT-M610] x 3
  22. BUTTON HEAD M6x15mm\*
  23. BUTTON HEAD M6x20mm [BBT-M620] x 3
  24. BUTTON HEAD M6x35mm [BBT-M635]
  25. BUTTON HEAD M6x50mm [BBT-M650]
  26. BUTTON HEAD M8x15mm [BBT-M815] x 4
  27. BUTTON HEAD M8x20mm [BBT-M820] x 4
  28. BUTTON HEAD M8x25mm [BBT-M825]
  29. HEX BOLT M8x40mm [HBT-M840] x 2
  30. COLLAR 23-6 [CLR-23-6]
  31. COLLAR 2-8 (BK) [BPCLR-2] x 2\*\*
  32. FOOT PEG COLLAR 12 [PEGCLR-12] x 2
  33. SHIFT BASE COLLAR 27 (BK) [SBCLR-27]
  34. PEG WASHER M8 [PWS-8]
  35. SPLIT WASHER M8 [SWS-8] x 2
  36. NUT M5 [NUT-5] x 2
  37. NUT M6 [NUT-6] x 2
  38. JAM NUT M6 [JNT-6]
  39. LOCK NUT M6 [LNT-6]
  40. MALE ROD END M6 [RDED-M6]
- SPRING 8-25 (not pictured)  
is pre-attached to part# 15/16

\* Optional part, for use with the stock exhaust  
on 2015-16 U.S. models - (part# CANBT-BMW1)