

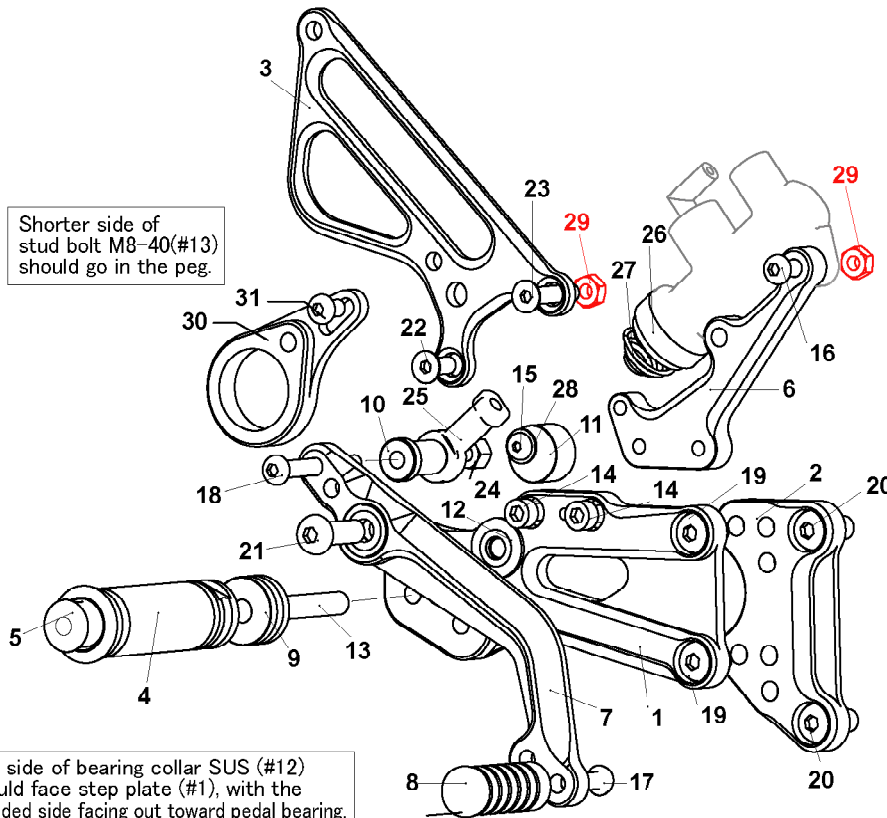
BMW S1000RR (ABS) **No brake light switch included.**

(R)

Due to running improvements in the designs of Sato parts, some new replacement parts may look somewhat different than the original parts with the same part #. These slight differences are mostly cosmetic and have no effect on performance.

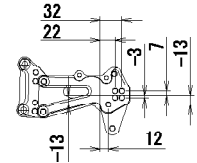
Shorter side of stud bolt M8-40(#13) should go in the peg.

Flat side of bearing collar SUS (#12) should face step plate (#1), with the rounded side facing out toward pedal bearing.



1. STEP PLATE [R]
2. BASE PLATE [R]
3. HEEL GUARD [R](HG23)
4. FOOT PEG
5. FOOT PEG END CAP
6. MASTER STAY
7. BRAKE PEDAL (BPD8)
8. PEDAL TIP DELRIN
9. FOOT PEG COLLAR 15
10. COLLAR 23-6(BK)
11. PEDAL STOPPER 12.5 DELRIN
12. BEARING COLLAR SUS
13. STUD BOLT M8-40
14. SOCKET HEAD M6 × 10mm × 2
15. BUTTON HEAD M5 × 20mm
16. BUTTON HEAD M6 × 25mm
17. BUTTON HEAD M6 × 20mm
18. BUTTON HEAD M6 × 50mm
19. BUTTON HEAD M8 × 15mm × 2
20. BUTTON HEAD M8 × 20mm × 2
21. BUTTON HEAD M8 × 25mm
22. FLAT HEAD M6 × 15mm
23. FLAT HEAD M6 × 30mm
24. LOCK NUT M6
25. FEMALE ROD END M6
26. RETURN SPRING COLLAR(BK)
27. RETURN SPRING 20
28. WASHER M5
- * 29. NUT M6(STOCK)
30. CANISTER BRACKET(BK)
31. BUTTON HEAD M6 × 15mm

Note: Canister Bracket cannot be used with this base plate/step plate set up.

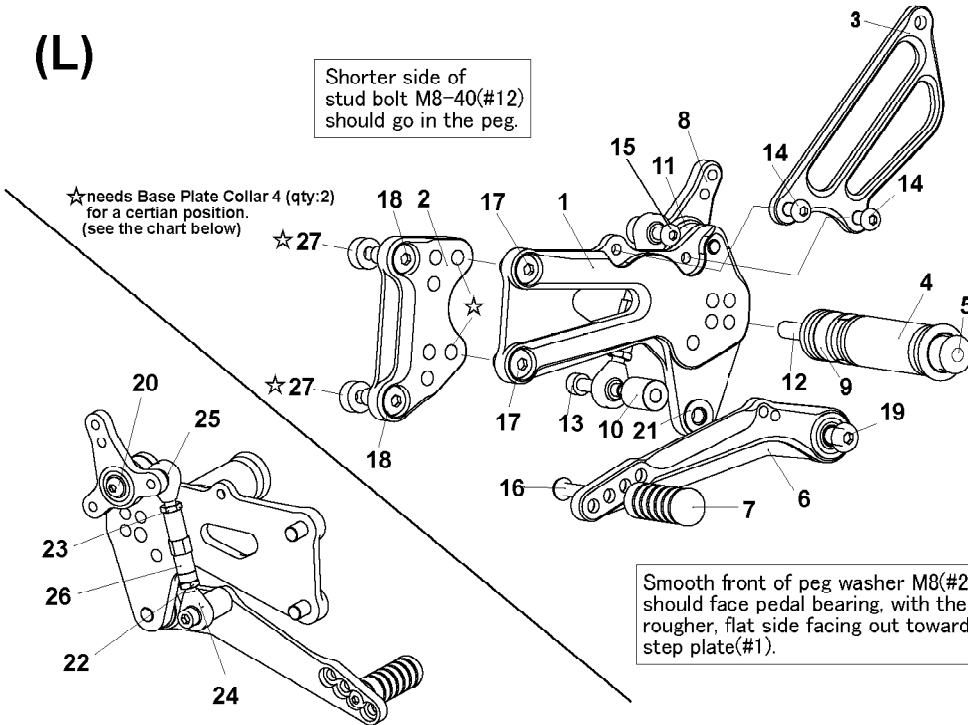


(L)

Shorter side of stud bolt M8-40(#12) should go in the peg.

★ needs Base Plate Collar 4 (qty:2) for a certain position. (see the chart below)

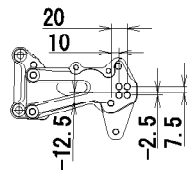
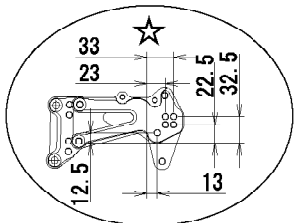
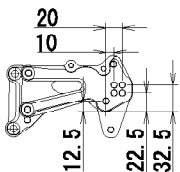
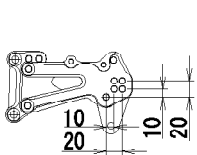
★ 27



Smooth front of peg washer M8(#21) should face pedal bearing, with the rougher, flat side facing out toward step plate(#1).



1. STEP PLATE [L]
2. BASE PLATE [L]
3. HEEL GUARD [L](HG2)
4. FOOT PEG
5. FOOT PEG END CAP
6. SHIFT PEDAL (SPD16)
7. PEDAL TIP DELRIN
8. LINK 70-80(BK)
9. FOOT PEG COLLAR 15
10. ROD END COLLAR 19(BK)
11. COLLAR 10-8(BK)
12. STUD BOLT M8 × 40mm
13. SOCKET HEAD M6 × 35mm
14. BUTTON HEAD M6 × 10mm × 2
15. BUTTON HEAD M6 × 15mm
16. BUTTON HEAD M6 × 20mm
17. BUTTON HEAD M8 × 15mm × 2
18. BUTTON HEAD M8 × 20mm × 2
19. BUTTON HEAD M8 × 25mm
20. BUTTON HEAD M8 × 35mm
21. PEG WASHER M8
22. REVERSE JAM NUT M6
23. JAM NUT M6
24. MALE REVERSE ROD END M6
25. MALE ROD END M6
26. SHIFT ROD 40
- ★ 27. BASE PLATE COLLAR 4(BK) × 2



Additional positions lower than stock can be achieved by switching left and right base plates.