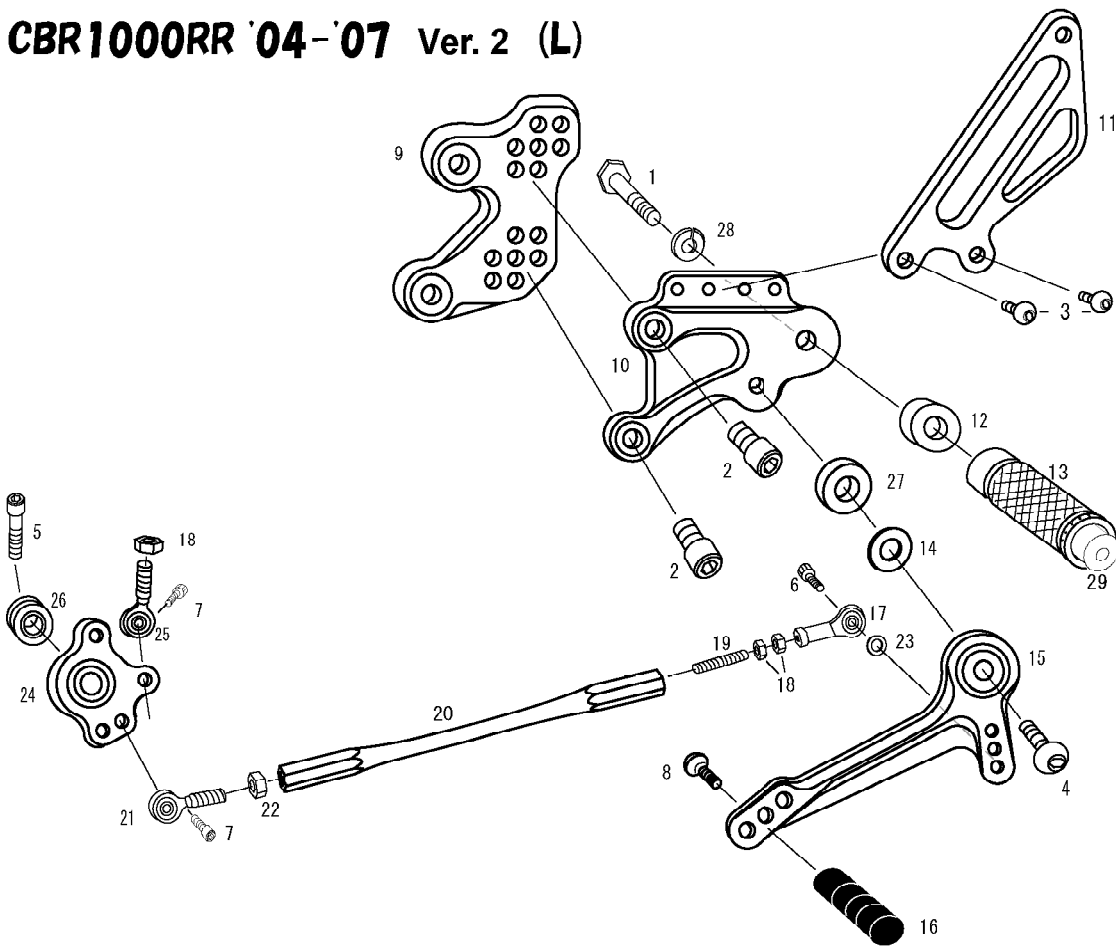


CBR1000RR '04-'07 Ver. 2 (L)

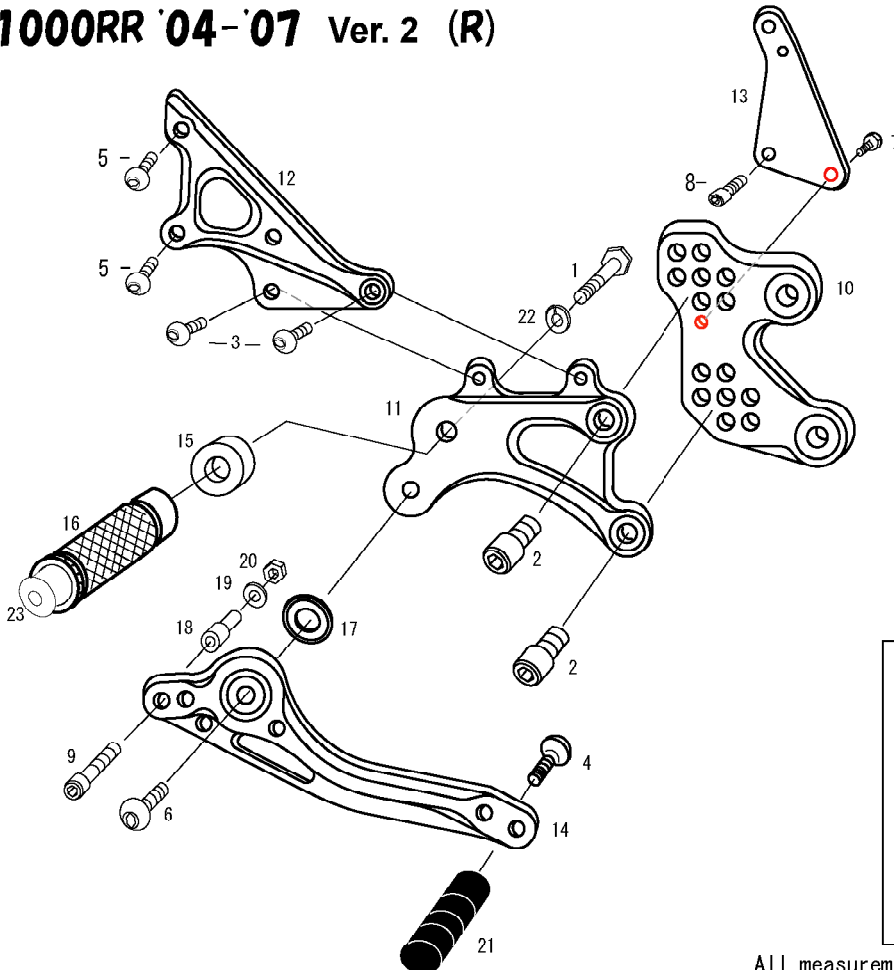


1. HEX BOLT M8 × 45mm
2. SOCKET HEAD M8 × 15mm × 2
3. BUTTON HEAD M6 × 10mm × 2
4. BUTTON HEAD M8 × 30mm
5. SOCKET HEAD M8 × 45mm
6. SOCKET HEAD M6 × 20mm
7. SOCKET HEAD M6 × 15mm × 2
8. BUTTON HEAD M6 × 20mm
9. BASE PLATE [L]
10. STEP PLATE [L]
11. HEEL GUARD [L] (HG17)
12. FOOT PEG COLLAR 12
13. FOOT PEG
14. PEG WASHER M8
15. SHIFT PEDAL (SPD9)
16. PEDAL TIP DELRIN
17. FEMALE ROD EMD M6
18. JAM NUT M6
19. STUD M6
20. SHIFT ROD 160
21. MALE REVERSE ROD END M6
22. REVERSE JAM NUT M6
23. ROD END COLLAR 3
24. SHIFT CRANK (BK)
25. MALE ROD END M6
26. BEARING COLLAR 15 (BK)
27. COLLAR 4
28. SPLIT WASHER M8
29. FOOT PEG END CAP

※ADJUST THE STOCK CHANGE ARM WHEN INSTALLING SATO REAR SETS.



CBR1000RR '04-'07 Ver. 2 (R)



1. HEX BOLT M8 × 45mm
2. SOCKET HEAD M8 × 15mm × 2
3. BUTTON HEAD M6 × 10mm × 2
4. BUTTON HEAD M6 × 20mm
5. BUTTON HEAD M6 × 20mm × 2
6. BUTTON HEAD M8 × 30mm
7. FLANGE HEAD M6 × 10mm
8. SOCKET HEAD M6 × 15mm
9. SOCKET HEAD M6 × 40mm
10. BASE PLATE [R]
11. STEP PLATE [R]
12. MASTER STAY
13. GUARD STAY (BK)
14. BRAKE PEDAL 150 (BPD1)
15. FOOT PEG COLLAR 12
16. FOOT PEG
17. BEARING COLLAR SUS
18. BRAKE ROD COLLAR 22 (BK)
19. WASHER M6
20. PLAIN NUT M6
21. PEDAL TIP DELRIN
22. SPLIT WASHER M8
23. FOOT PEG END CAP

POSITIONS		
1	0mm	10mm Up
2	10mm Back	10mm Up
3	0mm	20mm Up
4	10mm Back	20mm Up
5	20mm Back	20mm Up
6	10mm Back	30mm Up
7	20mm Back	30mm Up

All measurements are in relation to stock position (0 mm)