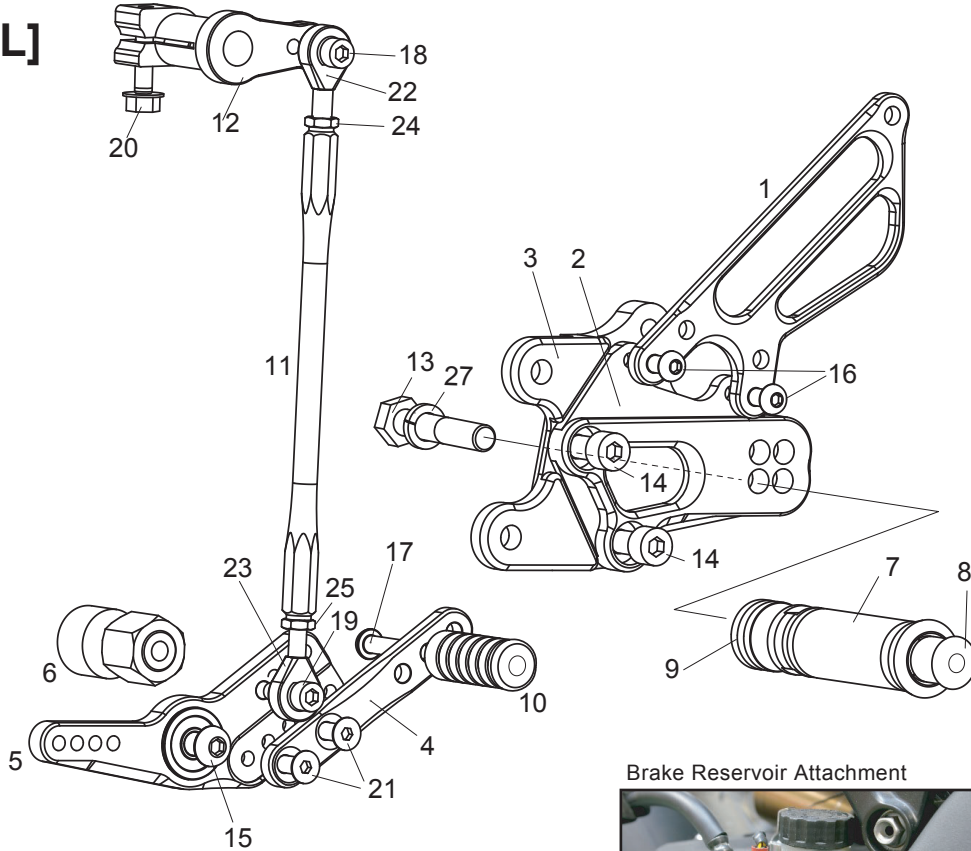


[L]



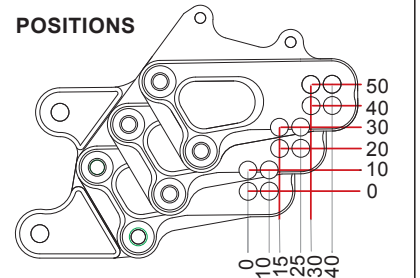
Brake Reservoir Attachment



[L] SIDE

1. (L) HEEL GUARD [HG-14L]
2. (L) STEP PLATE [H-CBR108SP-L]
3. (L) BASE PLATE [H-CBR108BP-L]
4. SHIFT PEDAL SPD8(BK) [SPD-8]
5. SHIFT PEDAL SPD13(BK) [SPD-13]
6. SHIFT BASE 46 [SB-46SUS]
7. FOOT PEG [PEG] (Includes End Cap)
8. FOOT PEG END CAP [ST-002]
9. FOOT PEG COLLAR 12 [PEGCLR-12]
10. PEDAL TIP (DELRIN) [ST-001D / ST-001D18]
11. SHIFT ROD 170(BK) [SRD-170B]
12. CHANGE ARM CA1(BK) [CA-1]
13. HEX HEAD M8×40mm [HBT-M840]
14. SOCKET HEAD M8×15mm [SBT-M815] ×2
15. BUTTON HEAD M8×30mm [BBT-M830]
16. BUTTON HEAD M6×10mm [BBT-M610] ×2
17. BUTTON HEAD M6×20mm [BBT-M620]
18. SOCKET HEAD M6×18mm [SBT-M618]
19. SOCKET HEAD M6×18mm [SBT-M618]
20. FLANGE HEAD M6×20mm [FGBT-M620]
21. FLAT HEAD M6×10mm [FBT-M610] ×2
22. MALE REVERSE ROD END M6 [RDED-M6L]
23. MALE ROD END M6 [RDED-M6]
24. REVERSE JAM NUT M6 [JNT-6L]
25. JAM NUT M6 [JNT-6]
27. SPLIT WASHER M8 [SWS-8]

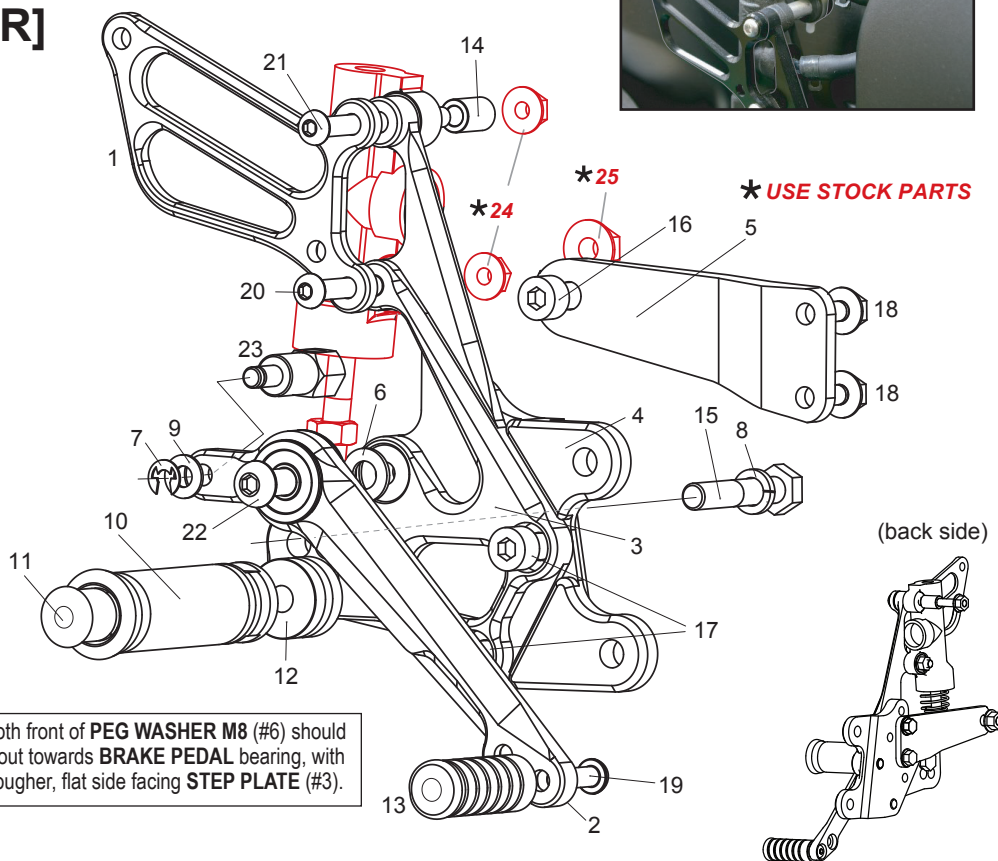
POSITIONS



1	0mm Back	0mm Up	7	25mm Back	20mm Up
2	0mm Back	10mm Up	8	25mm Back	30mm Up
3	10mm Back	0mm Up	9	30mm Back	40mm Up
4	10mm Back	10mm Up	10	30mm Back	50mm Up
5	15mm Back	20mm Up	11	40mm Back	40mm Up
6	15mm Back	30mm Up	12	40mm Back	50mm Up

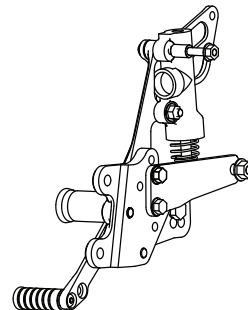
All positions are in relation to stock peg position (0mm)

[R]



Smooth front of PEG WASHER M8 (#6) should face out towards BRAKE PEDAL bearing, with the rougher, flat side facing STEP PLATE (#3).

(back side)



[R] SIDE

1. (R) HEEL GUARD [HG-13R]
 2. BRAKE PEDAL [BPD-9b]
 3. (R) STEP PLATE [H-CBR108SP-R]
 4. (R) BASE PLATE [H-CBR108BP-R]
 5. CANISTER BRACKET (BK) [CANBT-H1V2]
 6. PEG WASHER M8 [PWS-8]
 7. E CLIP M6 [ECP-6]
 8. SPLIT WASHER M8 [SWS-8]
 9. WASHER M6 [WS-6]
 10. FOOT PEG [PEG] (Includes End Cap)
 11. FOOT PEG END CAP [ST-002]
 12. FOOT PEG COLLAR 15 [PEGCLR-15]
 13. PEDAL TIP (DELRIN) [ST-001D / ST-001D18]
 14. COLLAR 15-6 [CLR-15-6]
 15. HEX HEAD M8×40mm [HBT-M840]
 16. SOCKET HEAD M8×20mm [SBT-M820]
 17. SOCKET HEAD M8×15mm [SBT-M815] ×2
 18. FLANGE HEAD M6×10mm [FGBT-M610] ×2
 19. BUTTON HEAD M6×20mm [BBT-M620]
 20. BUTTON HEAD M6×35mm [BBT-M635]
 21. BUTTON HEAD M6×70mm [BBT-M670]
 22. BUTTON HEAD M8×25mm [BBT-M825]
 23. BRAKE ROD M40 [BRD-M40]
- Not Pictured:
BRAKE LIGHT SWITCH P-1.25 [BSW-125]
RETURN SPRING 40 [RS-RSP] (Optional part)
- ★24. FLANGE HEX NUT M6 (STOCK PART)
★25. FLANGE HEX NUT M8 (STOCK PART)