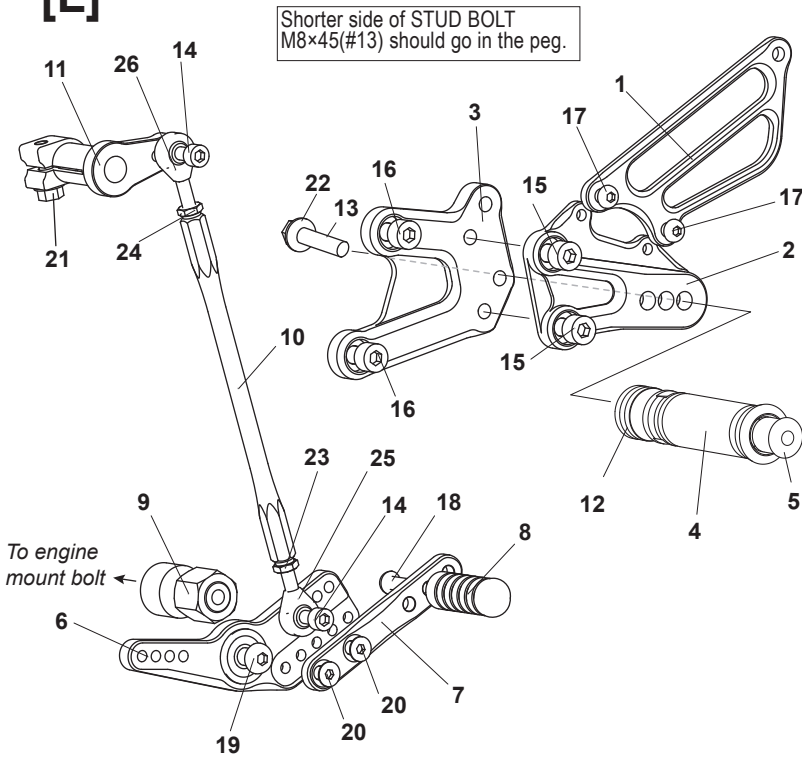


# HONDA CBR1000RR ABS ('09-'16) REAR SETS (part# H-CBR109RSA)

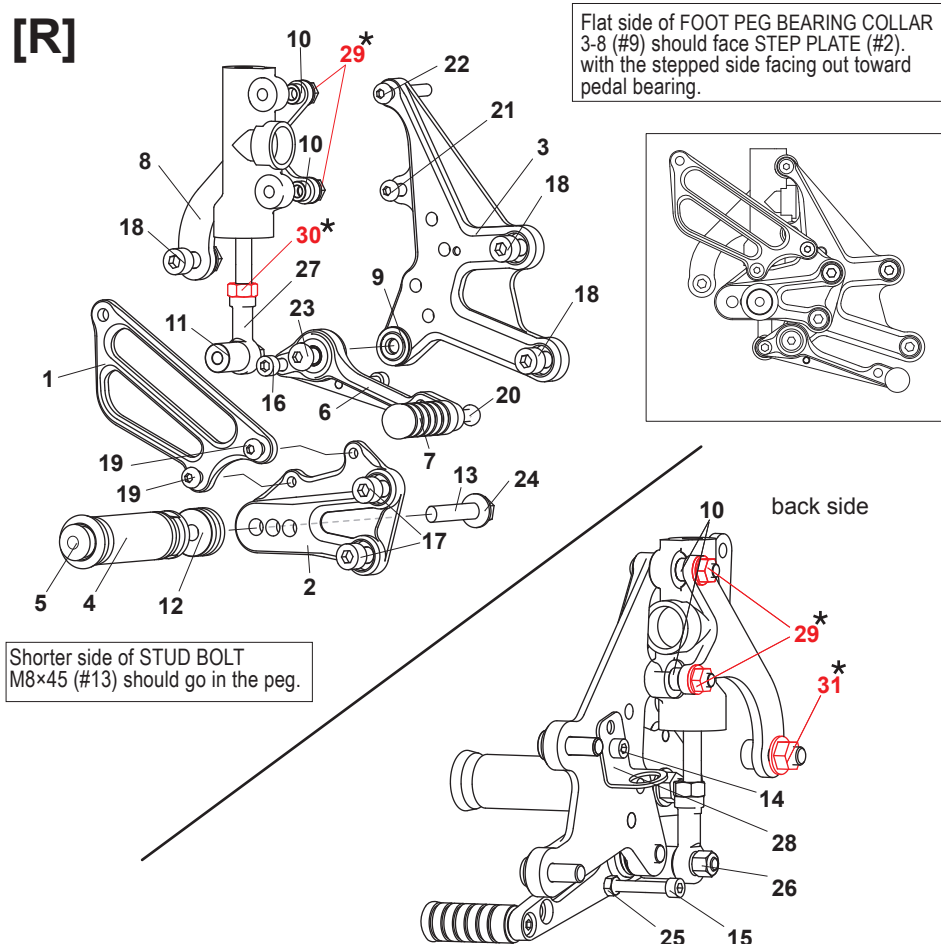
[L]



1. (L) HEEL GUARD [HG-2L]
2. (L) STEP PLATE
3. (L) BASE PLATE
4. FOOT PEG [PEG]
5. FOOT PEG END CAP [ST-002]
6. SHIFT PEDAL SPD13 (BK) [SPD-13-B]
7. SHIFT PEDAL SPD8 (BK)
8. PEDAL TIP (DELRIN) [ST-001D]
9. SHIFT BASE 46 [SB46SUS]
10. SHIFT ROD 170(BK) [SRD-170B]
11. CHANGE ARM L (BK) [CA1]
12. FOOT PEG COLLAR 12 [PEGCLR-12]
13. STUD BOLT M8-45mm [STBT-45]
14. SOCKET HEAD M6-15mm [SBT-M615] x2
15. SOCKET HEAD M8-15mm [SBT-M815] x2
16. SOCKET HEAD M8-20mm [SBT-M820] x2
17. BUTTON HEAD M6-10mm [BBT-M610] x2
18. BUTTON HEAD M6-20mm [BBT-M620]
19. BUTTON HEAD M8-30mm [BBT-M830]
20. FLAT HEAD M6-10mm [FBT-M610] x2
21. FLANGE HEAD M6-20mm [FGBT-M620]
22. FLANGE NUT M8 [FNT-8]
23. JAM NUT M6 [JNT-6]
24. REVERSE JAM NUT M6 [JNT-6L]
25. MALE ROD END M6 [RDED-M6]
26. MALE REVERSE ROD END M6 [RDED-M6L]

Due to running improvements in the designs of Sato parts, some new replacement parts may look somewhat different than the original parts with the same part #. These slight differences are mostly cosmetic and have no effect on performance.

[R]



1. (R) HEEL GUARD [HG-2R]
2. (R) STEP PLATE
3. (R) BASE PLATE
4. FOOT PEG [PEG]
5. FOOT PEG END CAP [ST-002]
6. BRAKE PEDAL [BPD-15]
7. PEDAL TIP (DELRIN) [ST-001D]
8. CANISTER BRACKET (BK)
9. PEG BEARING COLLAR 3S (BK) [PEGBCLR-3SB]
10. COLLAR 5-6 (BK) [HGCLR-5] x2
11. ROD END COLLAR 19 (BK) [RDED-CLR19]
12. FOOT PEG COLLAR 12 [PEGCLR-12]
13. STUD BOLT M8-45mm [STBT-45]
14. SOCKET HEAD M5-10mm [SBT-M510]
15. SOCKET HEAD M5-35mm [SBT-M535]
16. SOCKET HEAD M6-45mm [SBT-M645]
17. SOCKET HEAD M8-15mm [SBT-M815] x2
18. SOCKET HEAD M8-20mm [SBT-M820] x3
19. BUTTON HEAD M6-10mm [BBT-M610] x2
20. BUTTON HEAD M6-20mm [BBT-M620]
21. BUTTON HEAD M6-35mm [BBT-M635]
22. BUTTON HEAD M6-40mm [BBT-M640]
23. BUTTON HEAD M8-30mm [BBT-M830]
24. FLANGE NUT M8 [FNT-8]
25. NUT M5 [NUT-5]
26. LOCK NUT M6 [LNT-6]
27. FEMALE ROD END 6-M8 [RDED-F6-8]
28. PULL-SWITCH STAY [PSTAY-16]
- \* 29. FLANGE NUT M6 x2 (STOCK)
- \* 30. NUT M8 (STOCK)
- \* 31. FLANGE NUT M8 (STOCK)

(Use with stock brake light pull switch)