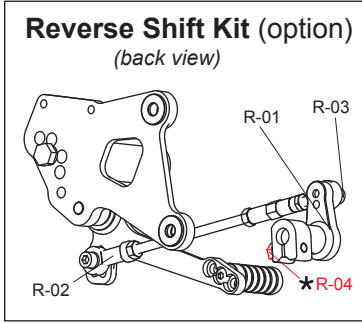
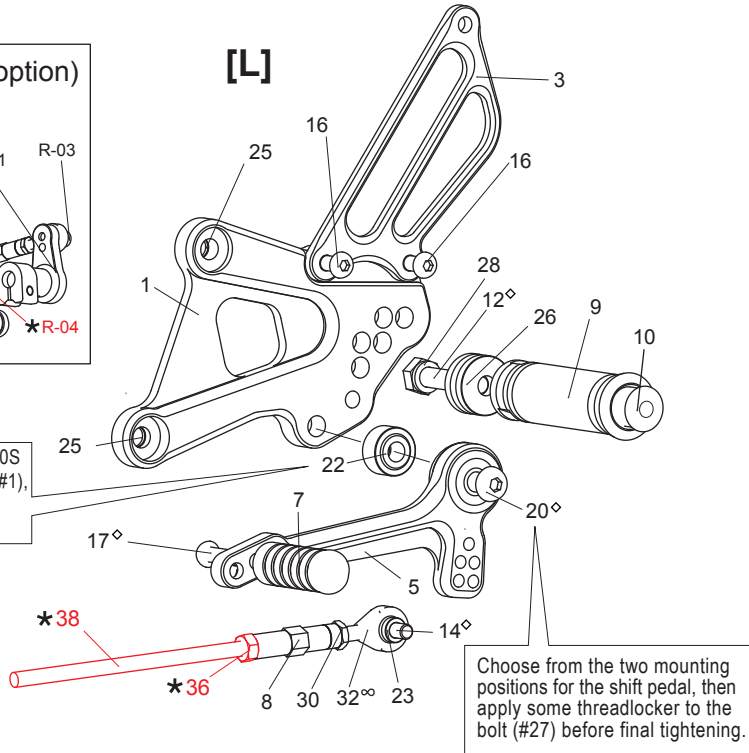


HONDA CBR250R / CBR300R ('11-'16) REAR SETS (part# H-C250RS)



Flat side of BEARING COLLAR 10S (#22) should face STEP PLATE (#1), with the stepped side facing out toward pedal bearing.



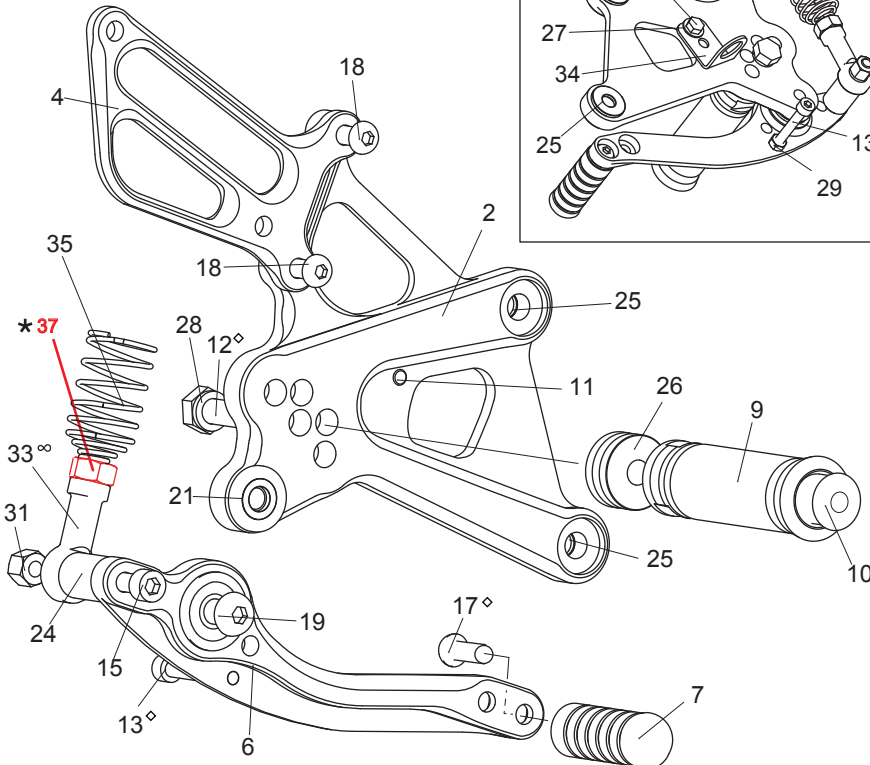
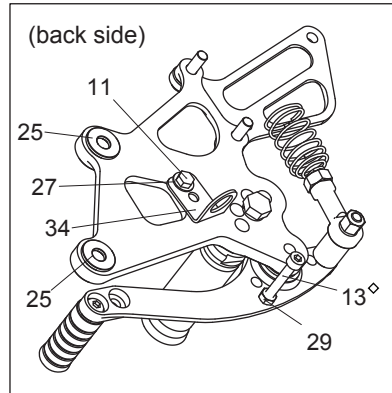
[L]-SIDE

1. (L) STEP PLATE
3. (L) HEEL GUARD [HG-2L]
5. SHIFT PEDAL SCP65-75 [SPD-0912]
7. PEDAL TIP (DELRIN) [ST-001D]
8. SHIFT ROD 40 [SRD-40]
9. FOOT PEG [PEG]
10. FOOT PEG END CAP [ST-002]
12. HEX BOLT M8×40mm [HBT-M840]
14. SOCKET HEAD M6×20mm
16. BUTTON HEAD M6×10mm ×2
17. BUTTON HEAD M6×20mm
20. BUTTON HEAD M8×35mm
22. PEG BEARING COLLAR 10S (BK)
23. ROD END COLLAR 3(GD) [RDED-CLR3]
25. BASE PLATE COLLAR 2 (BK) [BPCLR-2] ×2
26. FOOT PEG COLLAR 12 [PEGCLR-12]
28. SPLIT WASHER M8 [SWS-8]
30. REVERSE JAM NUT M6 [JNT-6L]
32. MALE REVERSE ROD END M6 [RDED-M6L]
- * 36. NUT M6 (STOCK PART)
- * 38. STD SHIFT ROD (STOCK PART)

- Reverse Shift Kit (Optional part)**
- R-01. CHANGE ARM (CA-6, BK)
 - R-02. FEMALE REVERSE ROD END M6
 - R-03. SOCKET HEAD M6×15mm
 - * R-04. FLANGE HEAD M6×20mm (STOCK PART)

[R] (Use stock brake light switch)

Flat side of BEARING COLLAR SUS (#21) should face STEP PLATE (#2), with the rounded side facing out toward pedal bearing.



[R]-SIDE

2. (R) STEP PLATE
4. (R) HEEL GUARD [HG-1R]
6. BRAKE PEDAL 180b [BPD2]
7. PEDAL TIP (DELRIN) [ST-001D]
9. FOOT PEG [PEG]
10. FOOT PEG END CAP [ST-002]
11. HEX HEAD M5×8mm [HBT-M58]
12. HEX BOLT M8×40mm [HBT-M840]
13. SOCKET HEAD M5×35mm
15. SOCKET HEAD M6×45mm
17. BUTTON HEAD M6×20mm
18. BUTTON HEAD M6×25mm ×2
19. BUTTON HEAD M8×25mm
21. BEARING COLLAR SUS [BGCLR-SUS]
24. ROD END COLLAR 19(BK) [RDEDCLR-19]
25. BASE PLATE COLLAR 2 (BK) [BPCLR-2] ×2
26. FOOT PEG COLLAR 12 [PEGCLR-12]
27. WASHER M5 [WS-5]
28. SPLIT WASHER M8 [SWS-8]
29. NUT M5 [NUT-5]
31. LOCK NUT M6 [LNT-6]
33. FEMALE ROD END 6-M8 [RDED-F6-8]
34. PULL SWITCH STAY 14 [PSTAY-14]
35. RETURN SPRING 40 [RS-RSP]
- * 37. NUT M8 (STOCK PART)

Due to running improvements in the designs of Sato parts, some new replacement parts may look somewhat different than the original parts with the same part #. These slight differences are mostly cosmetic and have no effect on performance.

◇ We recommend applying some threadlocker (such as Loctite or Vibra Tite) to these bolts. This should help prevent the parts from vibrating their way loose during a ride.

◇ Lubricate rod ends regularly