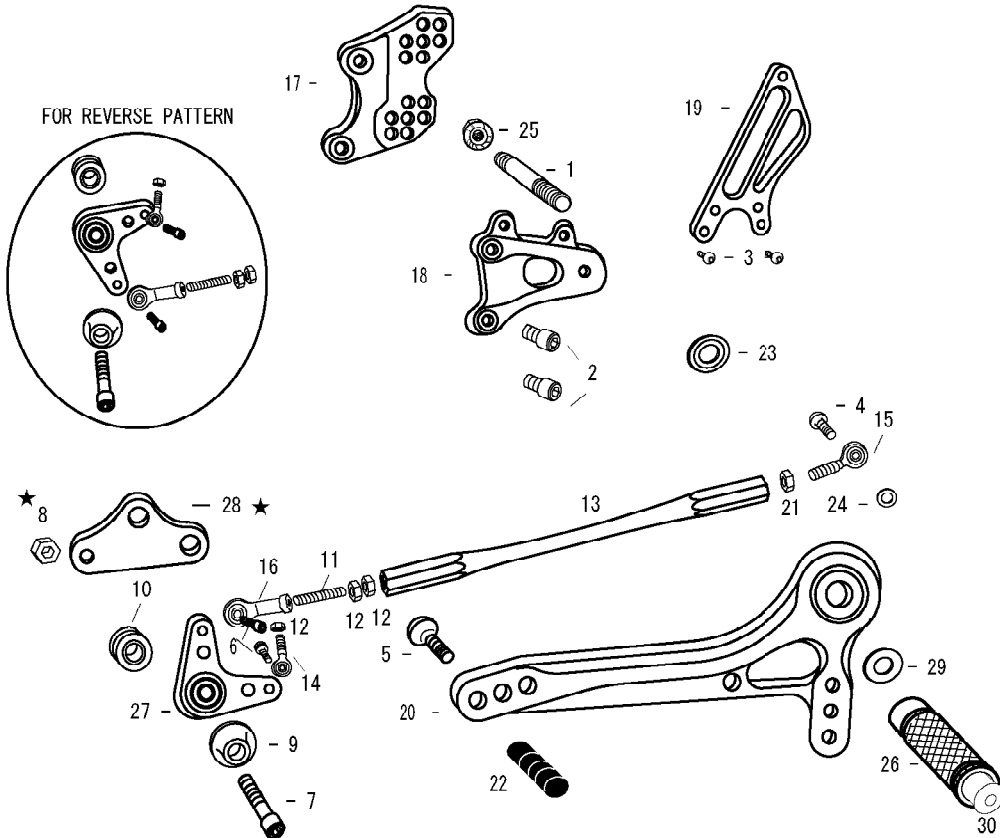


CBR600RR '03-'06 (L)



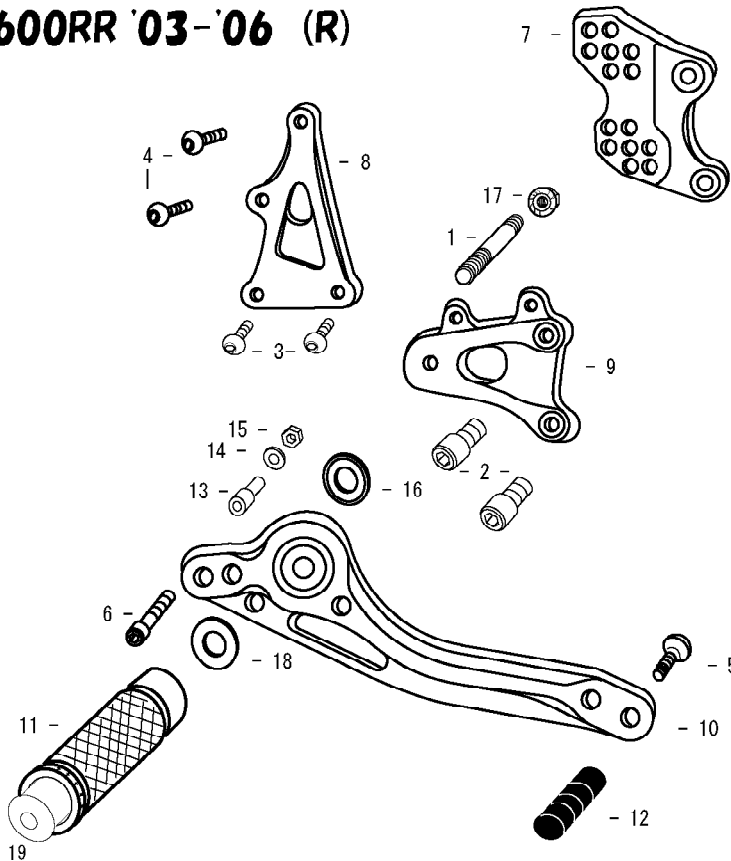
[ATTENTION] : ★for racers who do not require kick stand.
#7 will be M8×50mm instead of M8×45mm.

1. STUD BOLT SHORT
2. SOCKET HEAD M8×15mm ×2
3. BUTTON HEAD M6×10mm ×2
4. BUTTON HEAD M6×20mm ×2
5. BUTTON HEAD M6×20mm
6. SOCKET HEAD M6×20mm
7. SOCKET HEAD M8×45mm
- 8.★PLAIN NUT M8(RACE OPTION)
9. BEARING BOLT COVER
10. FOOT PEG BEARING COLLAR18(BK)
11. STUD M6
12. JAM NUT M6 ×3
13. SHIFT ROD 190
14. MALE ROD END M6
15. MALE REVERSE ROD END M6
16. FEMALE ROD END M6
17. BASE PLATE [L]
18. STEP PLATE [L]
19. HEEL GUARD [L] (HG3)
20. SHIFT PEDAL 70 (SPD2)
21. REVERSE JAM NUT M6
22. PEDAL TIP DELRIN
23. BEARING COLLAR SUS
24. ROD END COLLAR 3
25. FLANGE NUT M8
26. FOOT PEG
27. SHIFT CRANK (BK)
28. SHIFT CRANK BASE (BK) (RACE OPTION)
29. PEG WASHER M8
30. FOOT PEG END CAP

※ADJUST THE STOCK CHANGE ARM WHEN INSTALLING SATO REAR SETS.



CBR600RR '03-'06 (R)



1. STUD BOLT SHORT
2. SOCKET HEAD M8×15mm ×2
3. BUTTON HEAD M6×10mm ×2
4. BUTTON HEAD M6×20mm ×2
5. BUTTON HEAD M6×20mm
6. SOCKET HEAD M6×40mm
7. BASE PLATE [R]
8. MASTER STAY
9. STEP PLATE [R]
10. BRAKE PEDAL 150(BPD1)
11. FOOT PEG
12. PEDAL TIP DELRIN
13. BRAKE ROD ADAPTOR 22 (BK)
14. PLAIN WASHER M6
15. PLAIN NUT M6
16. BEARING COLLAR SUS
17. FLANGE NUT M8
18. PEG WASHER M8
19. FOOT PEG END CAP

POSITIONS		
1	0mm	10mm Up
2	0mm	20mm Up
3	10mm Back	10mm Up
4	10mm Back	20mm Up
5	10mm Back	30mm Up
6	20mm Back	20mm Up
7	20mm Back	30mm Up

All measurements are in relation to stock position (0 mm)