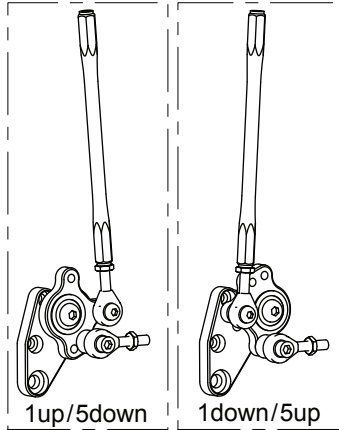


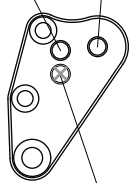
HONDA CBR600RR ABS ('09-) REAR SETS

part# H-CBR609RSA

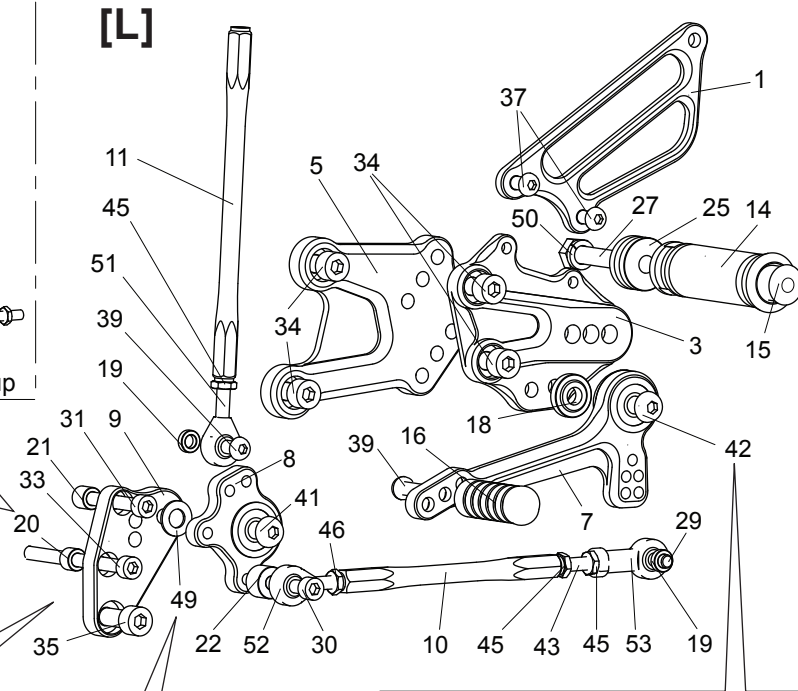


WASHER M6 (not pictured)
in case the water hose is loose,
add washer to **COLLAR 7-6** (#20)

REVERSE SHIFT
STOCK SHIFT



(The lower hole is not used on this model)



Rounded side of **PEG WASHER M8** (#49) should face **SHIFT LINK** (#8), with the rougher, flat side facing **SHIFT BASE** (#9).

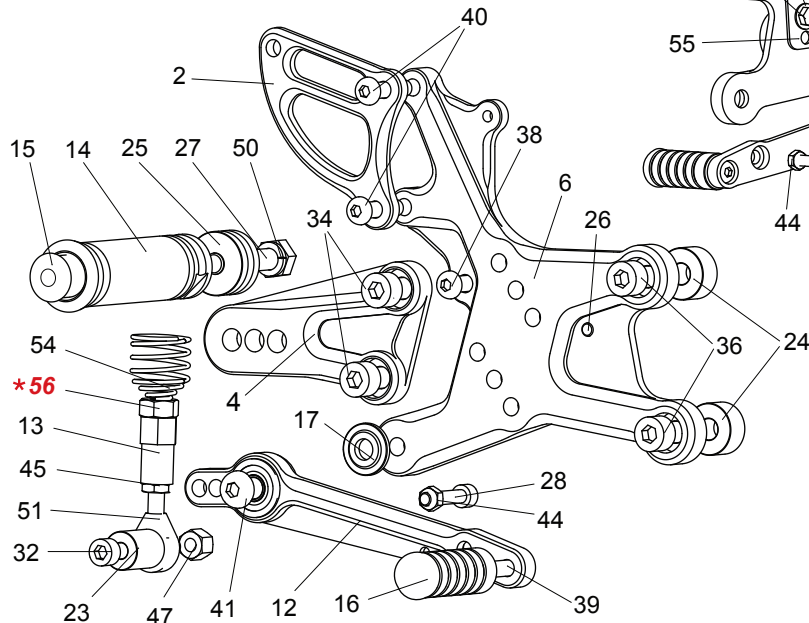
Choose from the 2 mounting positions for the **Shift Pedal** on the **Step Plate**, then apply threadlocker to the button head bolt (#42) before tightening.

NOTE: Flat side of **BEARING COLLAR 5** (#18) should face **STEP PLATE** (#3), with the stepped side facing out toward Shift Pedal bearings.

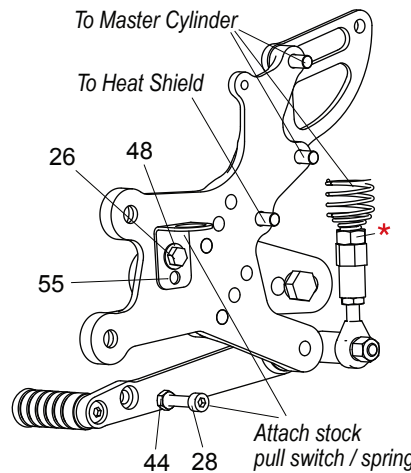
1. [L] HEEL GUARD [HG-2L]
2. [R] HEEL GUARD [HG-22R]
3. [L] STEP PLATE [H-CBR609ASP-L]
4. [R] STEP PLATE [H-CBR609ASP-R]
5. [L] BASE PLATE [H-CBR609ABP-L]
6. [R] BASE PLATE [H-CBR609ABP-R]
7. SHIFT PEDAL [SPD-0912]
8. SHIFT LINK (BK) [SK-2]
9. SHIFT BASE (BK) [SB-H2]
10. SHIFT ROD 120 [SRD-120]
11. SHIFT ROD 160 (BK) [SRD-160B]
12. BRAKE PEDAL [BPD-17]
13. BRAKE ROD ADAPTOR M6-8 [BRD-ADPTRM6-8]
14. FOOT PEG [PEG] x 2
15. FOOT PEG END CAP [ST-002] x 2
16. PEDAL TIP (DELRIN) [ST-001D18] x 2
17. BEARING COLLAR 3 (BK) [PEGBGCLR-3SB]
18. BEARING COLLAR 5 (BK) [PEGBGCLR-5SB]
19. ROD END COLLAR 3 (GD) [RDED-CLR3] x 2
20. COLLAR 7-6 [CLR-7-6]
21. COLLAR 9-6 [CLR-9-6]
22. ROD END COLLAR 10 (BK) [RDED-CLR10]
23. ROD END COLLAR 19 (BK) [RDED-CLR19]
24. BASE PLATE COLLAR 10 [BPCLR-12] x 2
25. PEG COLLAR 12 [PEGCLR-12] x 2
26. HEX HEAD M5x8mm [HBT-M58]
27. HEX HEAD M8x40mm [HBT-M40] x 2
28. SOCKET HEAD M5x25mm [SBT-M525]
29. SOCKET HEAD M6x20mm [SBT-M620]
30. SOCKET HEAD M6x30mm [SBT-M630]
31. SOCKET HEAD M6x40mm [SBT-M640]
32. SOCKET HEAD M6x45mm [SBT-M645]
33. SOCKET HEAD M6x80mm [SBT-M680]
34. SOCKET HEAD M8x15mm [SBT-M815] x 6
35. SOCKET HEAD M8x20mm [SBT-M820] x 2
36. SOCKET HEAD M8x25mm [SBT-M825] x 2
37. BUTTON HEAD M6x10mm [BBT-M610] x 2
38. BUTTON HEAD M6x15mm [BBT-M615]
39. BUTTON HEAD M6x20mm [BBT-M620] x 3
40. BUTTON HEAD M6x25mm [BBT-M625] x 2
41. BUTTON HEAD M8x25mm [BBT-M825]
42. BUTTON HEAD M8x30mm [BBT-M830]
43. STUD M6x45mm [STUD-M6]
44. NUT M5 [NUT-5]
45. JAM NUT M6 [JNT-6] x 3
46. REVERSE JAM NUT M6 [JNT-6L]
47. LOCK NUT M6 [LNT-6]
48. WASHER M5 [WS-5]
49. PEG WASHER M8 [PWS-5]
50. SPLIT WASHER M8 [SWS-8] x 2
51. MALE ROD END M6 [RDED-M6] x 2
52. MALE REVERSE ROD END M6 [RDED-M6L]
53. FEMALE ROD END M6 [RDED-F6]
54. RETURN SPRING 20 [RS-RSP2]
55. PULL SWITCH STAY 14 [PSTAY-14]
- * 56. NUT M8 (STOCK HONDA PART)

[R]

Flat side of **BEARING COLLAR 3** (#17) should face **STEP PLATE** (#4), with the stepped side facing out toward pedal bearings.



(Back Side)



POSITIONS		
1	10mm Back	10mm Up
2	20mm Back	10mm Up
3	30mm Back	10mm Up
4	17.5mm Back	20mm Up
5	27.5mm Back	20mm Up
6	37.5mm Back	20mm Up
7	25mm Back	30mm Up
8	35mm Back	30mm Up
9	45mm Back	30mm Up