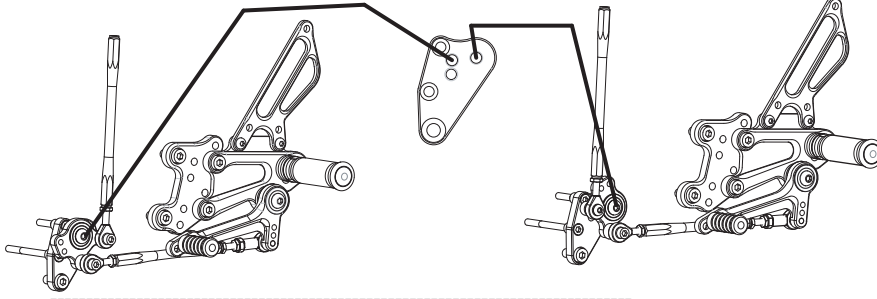
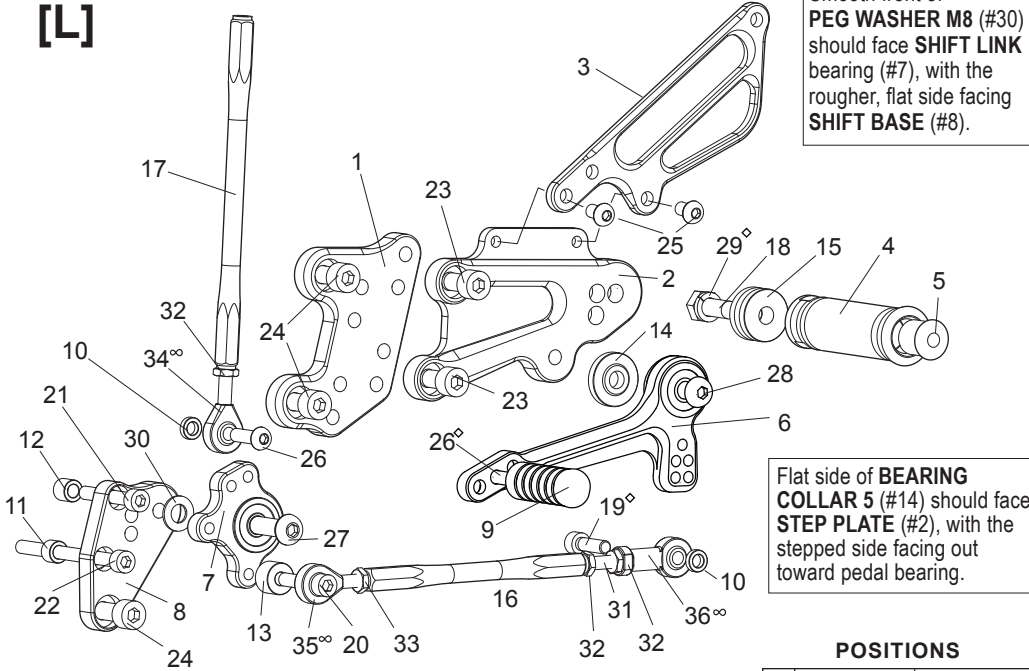


FOR REVERSE PATTERN

FOR STOCK PATTERN



[L]

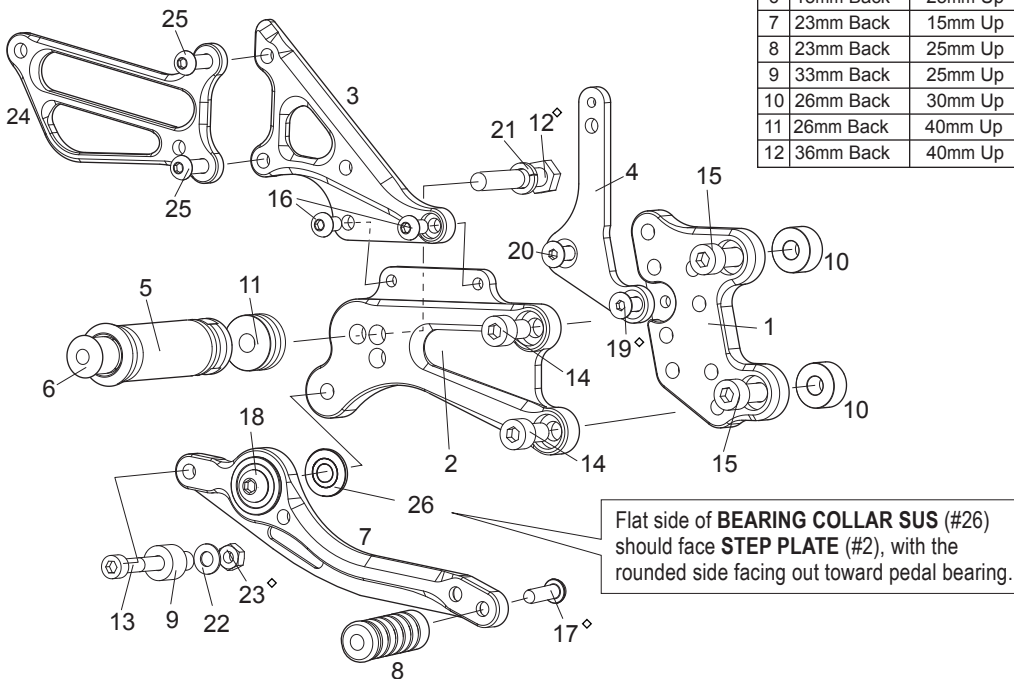


POSITIONS

1	0 mm	0 mm
2	0 mm	10mm Up
3	10mm Back	10mm Up
4	3mm Back	15mm Up
5	3mm Back	25mm Up
6	13mm Back	25mm Up
7	23mm Back	15mm Up
8	23mm Back	25mm Up
9	33mm Back	25mm Up
10	26mm Back	30mm Up
11	26mm Back	40mm Up
12	36mm Back	40mm Up

[R]

P-1.25 brake light switch included.



[L] SIDE

1. BASE PLATE [L] [H-CBR607BP-L]
2. STEP PLATE [L] [H-CBR607SP-L]
3. HEEL GUARD [L] [HG-4L]
4. FOOT PEG [PEG]
5. FOOT PEG END CAP [ST-002]
6. SHIFT PEDAL 65S [SPD-9]
7. SHIFT LINK (BK) [SK-2]
8. SHIFT BASE (BK) [SB-H2]
9. PEDAL TIP (DELRIN) [ST-001D]
10. ROD END COLLAR 3(GD) [RDED-CLR3] x2
11. COLLAR 7-6 [CLR-7-6]
12. COLLAR 9-6 [CLR-9-6]
13. ROD END COLLAR 10 (BK) [RDED-CLR10]
14. PEG BEARING COLLAR 5 [PEGBGCLR-5]
15. FOOT PEG COLLAR 12 [PEGCLR-12]
16. SHIFT ROD 120 [SRD-120]
17. SHIFT ROD 160 (BK) [SRD-160B]
18. HEX HEAD M8-40mm [HBT-M840]
19. SOCKET HEAD M6-20mm [SBT-M620]
20. SOCKET HEAD M6-30mm [SBT-M630]
21. SOCKET HEAD M6-40mm [SBT-M640]
22. SOCKET HEAD M6-80mm [SBT-M680]
23. SOCKET HEAD M8-15mm [SBT-M815] x2
24. SOCKET HEAD M8-20mm [SBT-M820] x3
25. BUTTON HEAD M6-10mm [BBT-M610] x2
26. BUTTON HEAD M6-20mm [BBT-M620] x2
27. BUTTON HEAD M8-25mm [BBT-M825]
28. BUTTON HEAD M8-30mm [BBT-M830]
29. SPLIT WASHER M8 [SWS-8]
30. PEG WASHER M8 [PWS-8]
31. STUD BOLT M6 [STUD-M6]
32. JAM NUT M6 [JNT-6] x3
33. REVERSE JAM NUT M6 [JNT-6L]
34. MALE ROD END M6 [RDED-M6]
35. REVERSE MALE ROD END M6 [RDED-M6L]
36. FEMALE ROD END M6 [RDED-F6]

[R] SIDE

1. BASE PLATE [R] [H-CBR607BP-R]
2. STEP PLATE [R] [H-CBR607SP-R]
3. MASTER STAY [H-CBR607MS]
4. HEAT GUARD STAY (BK) [HGS-HCBR607]
5. FOOT PEG [PEG]
6. FOOT PEG END CAP [ST-002]
7. BRAKE PEDAL 165 [BPD-3]
8. PEDAL TIP (DELRIN) [ST-001D]
9. BRAKE ROD COLLAR 22 (BK) [RDED-CLR22]
10. BASE PLATE COLLAR 10 (BK) [BPCLR-10] x2
11. FOOT PEG COLLAR 12 [PEGCLR-12]
12. HEX HEAD M8-40mm [HBT-M840]
13. SOCKET HEAD M6-40mm [SBT-M640]
14. SOCKET HEAD M8-15mm [SBT-M815] x2
15. SOCKET HEAD M8-30mm [SBT-M830] x2
16. BUTTON HEAD M6-10mm [BBT-M610] x2
17. BUTTON HEAD M6-20mm [BBT-M620]
18. BUTTON HEAD M8-25mm [BBT-M825]
19. FLAT HEAD M6-10mm [FBT-M610]
20. FLAT HEAD M6-15mm [FBT-M615]
21. SPLIT WASHER M8 [SWS-8]
22. PLAIN WASHER M6 [WS-6]
23. PLAIN NUT M6 [NUT-6]
24. HEEL GUARD [R] [HG-1R]
25. BUTTON HEAD M6-25mm [BBT-M625] x2
26. BEARING COLLAR SUS [BGCLR-SUS]

◊ We recommend applying some threadlocker (such as Loctite or Vibra Tite) to these bolts. This should help prevent the parts from vibrating their way loose during a ride. (Some pre-assembled parts have already been Loctited)

◊ Lubricate rod ends regularly