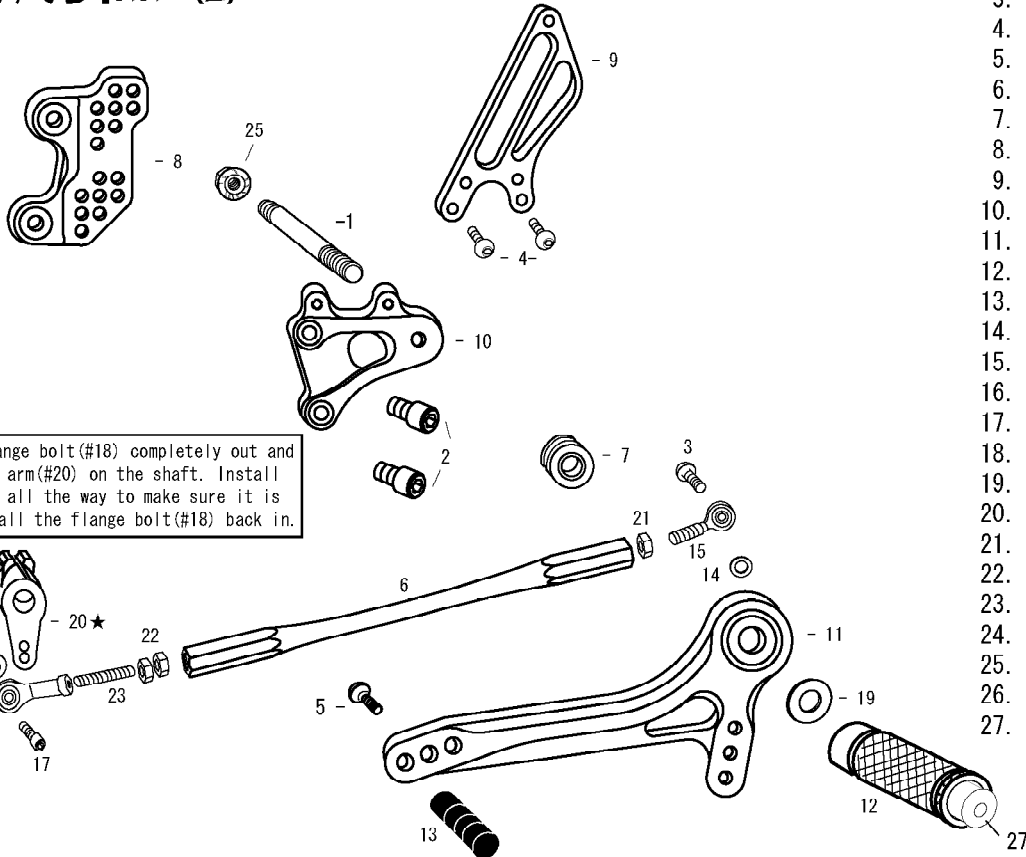


CBR929/954RR (L)

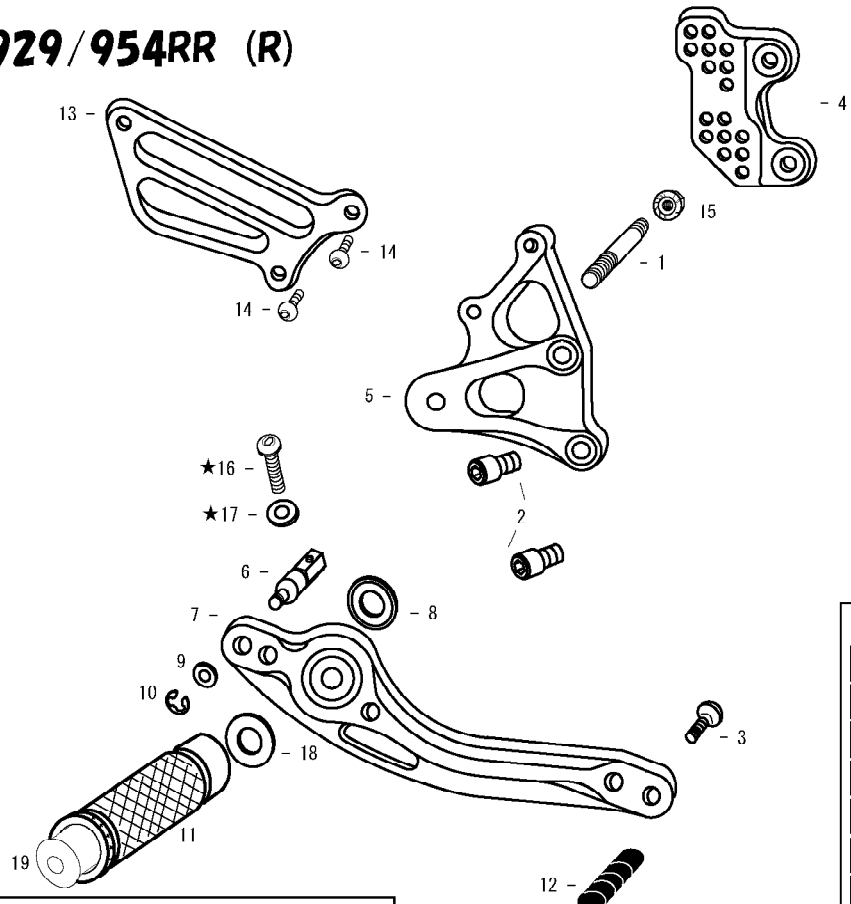


★Remove the flange bolt(#18) completely out and put the change arm(#20) on the shaft. Install the change arm all the way to make sure it is in. Then, install the flange bolt(#18) back in.

1. STUD BOLT LONG
2. SOCKET HEAD M8 × 15mm × 2
3. BUTTON HEAD M6 × 20mm
4. BUTTON HEAD M6 × 10mm × 2
5. BUTTON HEAD M6 × 20mm
6. SHIFT ROD 170
7. FOOT PEG BEARING COLLAR 10
8. BASE PLATE [L]
9. HEEL GUARD [L] (HG3)
10. STEP PLATE [L]
11. SHIFT PEDAL 60 (SPD1)
12. FOOT PEG
13. PEDAL TIP DELRIN
14. ROD END COLLAR 3
15. MALE REVERSE ROD END M6
16. FEMALE ROD END M6
17. SOCKET HEAD M6 × 25mm
18. FLANGE HEAD M6 × 20mm
19. PEG WASHER M8
20. CHANGE ARM L (BK) (CA1)
21. REVERSE JAM NUT M6
22. JAM NUT M6
23. STUD M6
24. PLAIN WASHER M6
25. FLANGE NUT M8
26. PLAIN NUT M6
27. FOOT PEG END CAP



CBR929/954RR (R)



★Remove the snap ring on master cylinder plunger to replace the stock push rod with SATO rod(#16) and washer (#17)

1. STUD BOLT SHORT
2. SOCKET HEAD M8 × 15mm × 2
3. BUTTON HEAD M6 × 20mm
4. BASE PLATE [R]
5. STEP PLATE [R]
6. BRAKE ROD M40
7. BRAKE PEDAL 180 (BPD2)
8. BEARING COLLAR SUS
9. PLAIN WASHER M6
10. E CLIP M6
11. FOOT PEG
12. PEDAL TIP DELRIN
13. HEEL GUARD [R] (HG1)
14. BUTTON HEAD M6 × 25mm × 2
15. FLANGE NUT M8
16. BRAKE MASTER PUSH ROD
17. PLAIN WASHER M8
18. PEG WASHER M8
19. FOOT PEG END CAP

POSITIONS		
1	0mm	0mm
2	0mm	10mm Up
3	0mm	20mm Up
4	10mm Back	10mm Up
5	10mm Back	20mm Up
6	20mm Back	20mm Up
7	20mm Back	30mm Up
8	10mm Back	30mm Up

All measurements are in relation to stock position (0 mm)