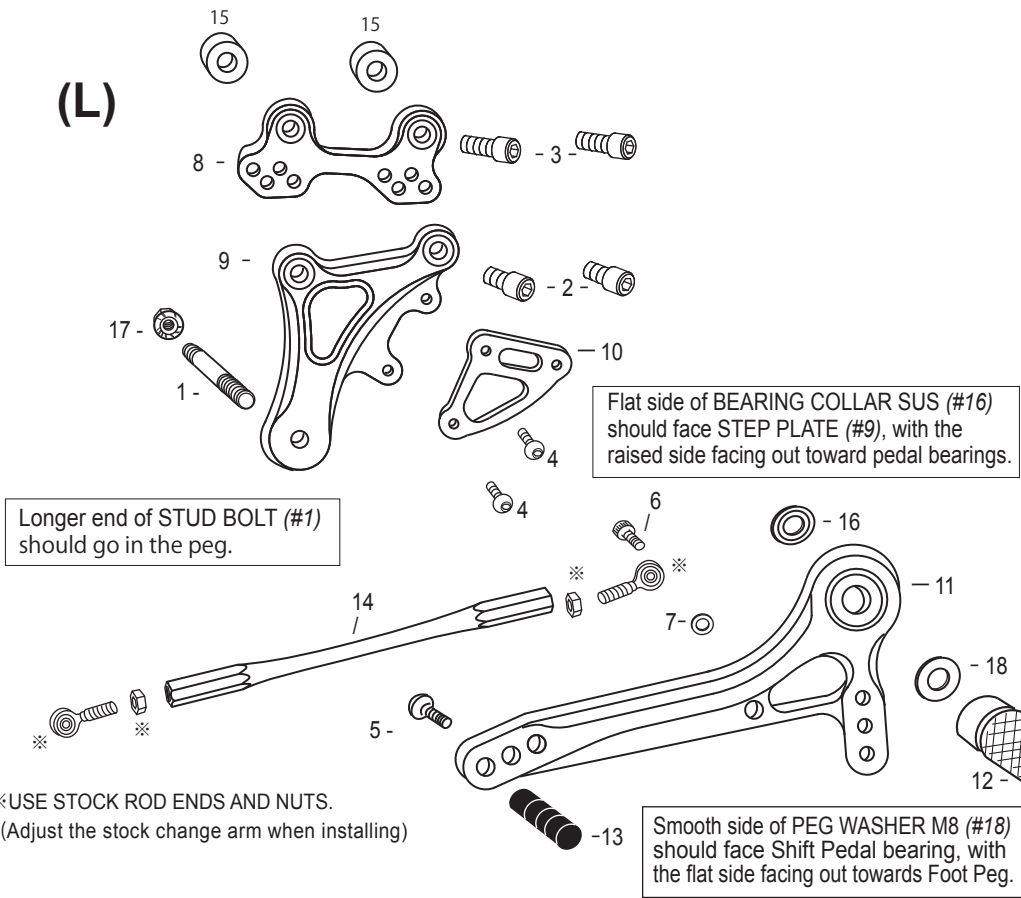


POSITIONS		
1	10mm Forward	20mm Up
2	0mm	20mm Up
3	0mm	30mm Up
4	10mm Back	30mm Up

All measurements are in relation to stock position (0 mm)

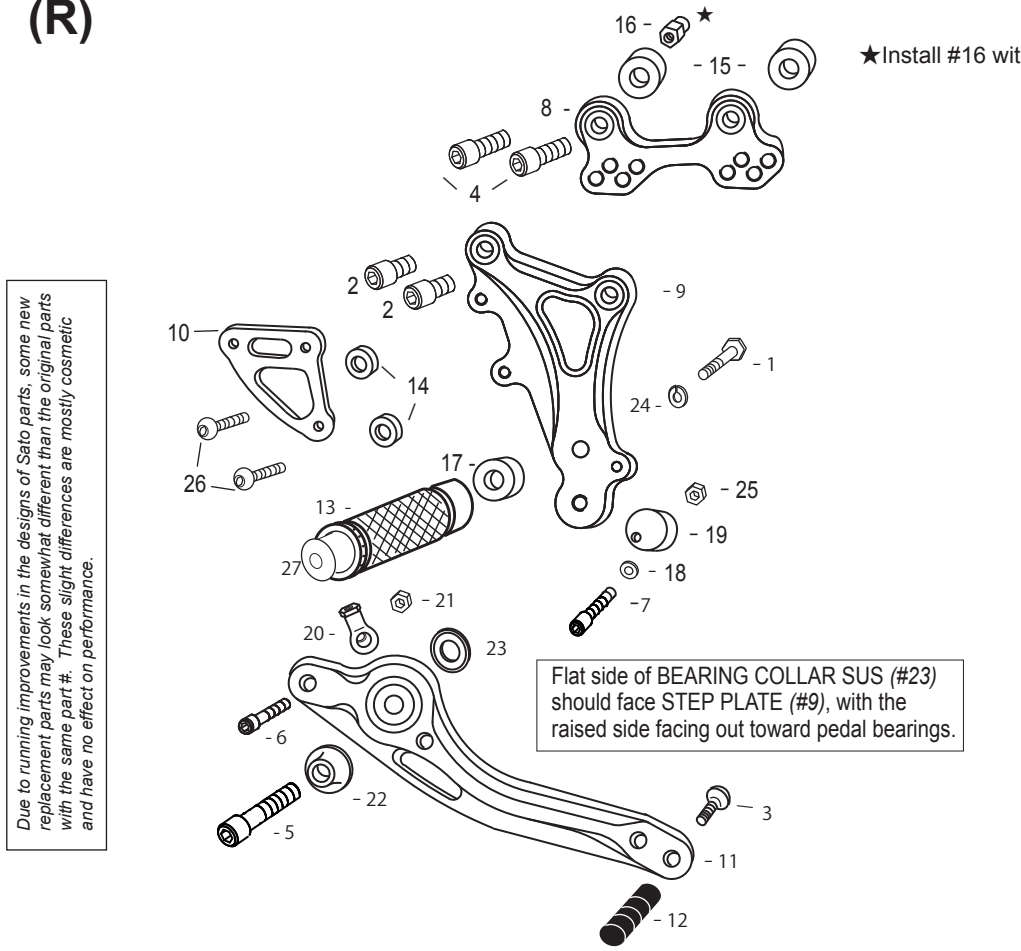
(L)



※USE STOCK ROD ENDS AND NUTS.  
(Adjust the stock change arm when installing)

1. STUD BOLT M8×55mm [STBT-S]
2. SOCKET HEAD M8×15mm [SBT-M815] × 2
3. SOCKET HEAD M8×30mm [SBT-M830] × 2
4. BUTTON HEAD M6×10mm [BBT-M610] × 2
5. BUTTON HEAD M6×20mm [BBT-M620]
6. SOCKET HEAD M6×20mm [SBT-M620]
7. ROD END COLLAR 3 [RDED-CLR3]
8. BASE PLATE [L]
9. STEP PLATE [L]
10. HEEL GUARD [L] [HG-11L]
11. SHIFT PEDAL 70 [SPD-0102]
12. FOOT PEG [PEG] (Includes End Cap)
13. PEDAL TIP (DELRIN) [ST-001D]
14. SHIFT ROD 160 [SRD-160]
15. BASE PLATE COLLAR 12 × 2
16. BEARING COLLAR SUS
17. FLANGE NUT M8 [FNT-8]
18. PEG WASHER M8 [PWS-8]
19. FOOT PEG END CAP [ST-002]

(R)



Due to running improvements in the designs of Sato parts, some new replacement parts may look somewhat different than the original parts with the same part #. These slight differences are mostly cosmetic and have no effect on performance.

★Install #16 with the stock oil tank.

1. HEX HEAD M8×45mm [HBT-M845]
2. SOCKET HEAD M8×15mm [SBT-M815] × 2
3. BUTTON HEAD M6×20mm [BBT-M620]
4. SOCKET HEAD M8×30mm [SBT-M830] × 2
5. SOCKET HEAD M8×30mm [SBT-M830]
6. SOCKET HEAD M6×25mm [SBT-M625]
7. SOCKET HEAD M5×25mm [SBT-M525]
8. BASE PLATE [R]
9. STEP PLATE [R]
10. HEEL GUARD [R] [HG-11R]
11. BRAKE PEDAL 165 [BPD-3]
12. PEDAL TIP (DELRIN) [ST-001D]
13. FOOT PEG [PEG] (Includes End Cap)
14. HEEL GUARD COLLAR 10(BK) × 2
15. BASE PLATE COLLAR 12 [BPCLR-12] × 2
16. OIL TANK STAY(BK)
17. FOOT PEG COLLAR 12 [PEGCLR-12]
18. PLAIN WASHER M5 [WS-5]
19. BRAKE PEDAL STOPPER (DELRIN) [BPD-STOPPER]
20. FEMALE ROD END M6 [RDED-F6]
21. PLAIN NUT M6 [WS-6]
22. BEARING BOLT COVER [BGBCR]
23. BEARING COLLAR SUS [BGCLR-SUS]
24. SPLIT WASHER M8 [SWS-8]
25. PLAIN NUT M5 [NUT-5]
26. BUTTON HEAD M6×25mm [BBT-M625] × 2
27. FOOT PEG END CAP [ST-002]