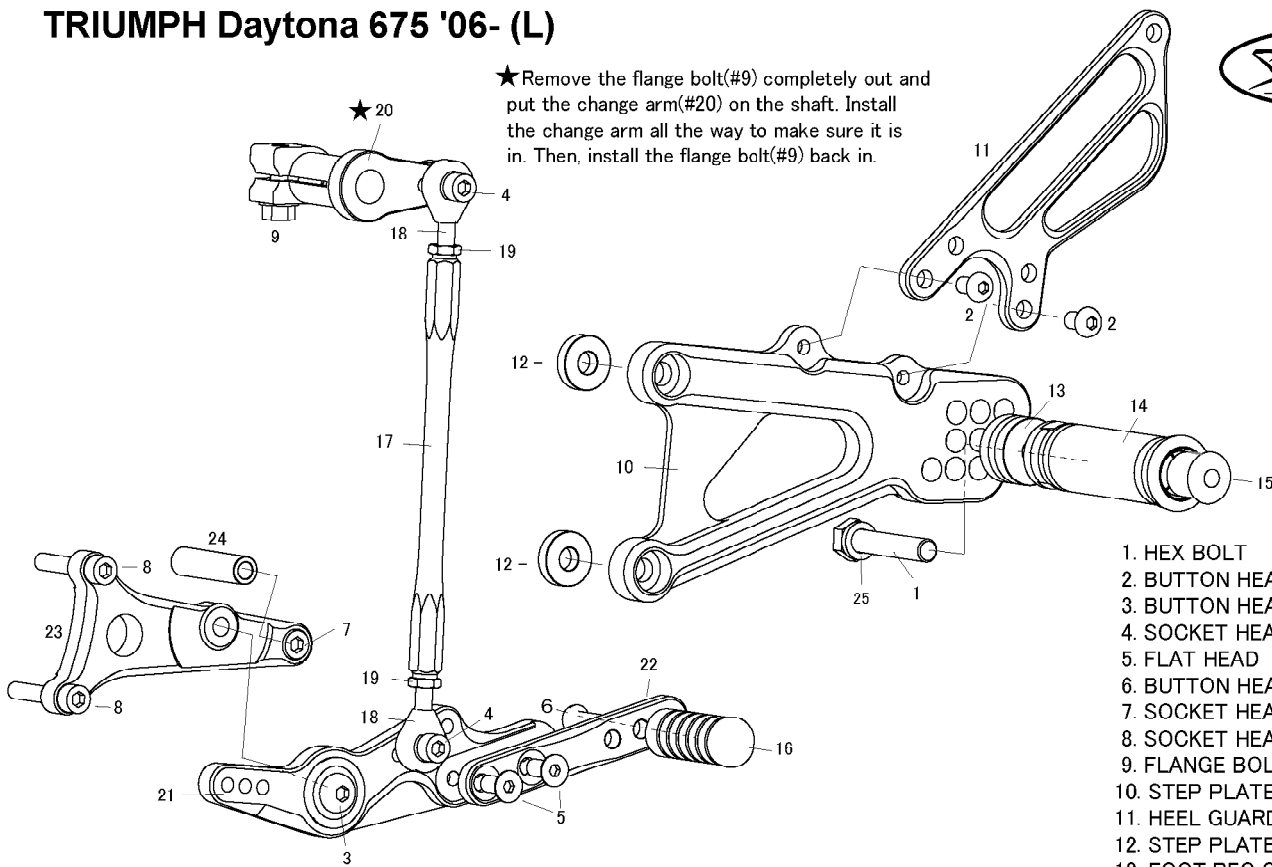


TRIUMPH Daytona 675 '06- (L)



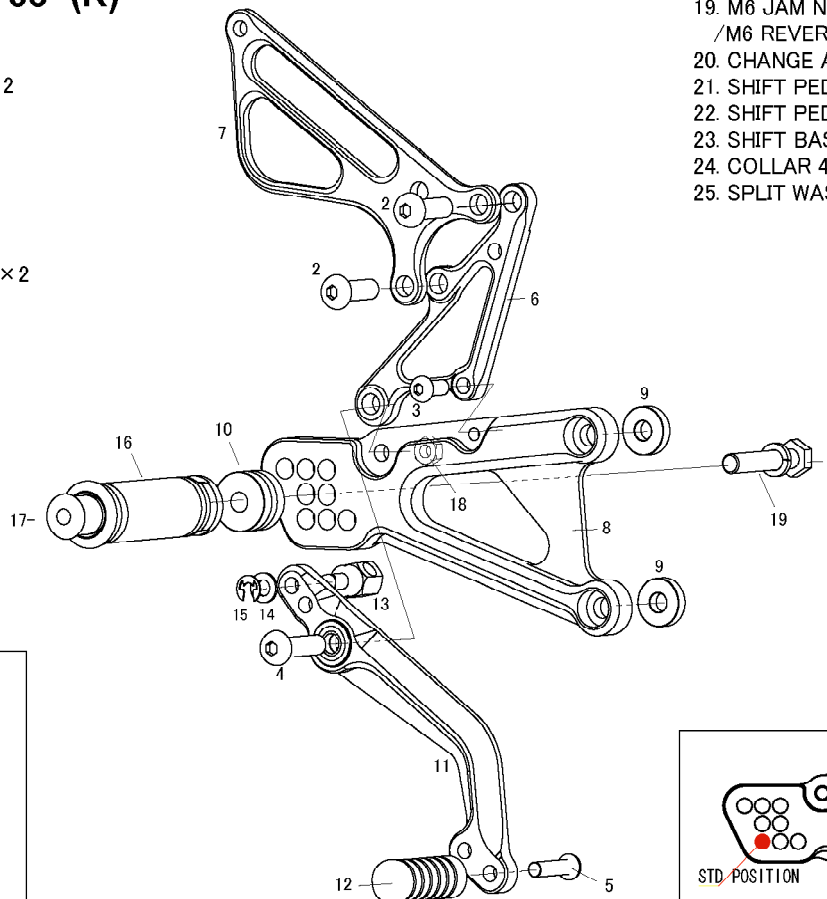
★ Remove the flange bolt(#9) completely out and put the change arm(#20) on the shaft. Install the change arm all the way to make sure it is in. Then, install the flange bolt(#9) back in.



- 1. HEX BOLT M8 × 45mm
- 2. BUTTON HEAD M6 × 10mm × 2
- 3. BUTTON HEAD M8 × 25mm
- 4. SOCKET HEAD M6 × 15mm × 2
- 5. FLAT HEAD M6 × 10mm × 2
- 6. BUTTON HEAD M6 × 25mm
- 7. SOCKET HEAD M6 × 70mm
- 8. SOCKET HEAD M6 × 35mm × 2
- 9. FLANGE BOLT M6 × 20mm
- 10. STEP PLATE [L]
- 11. HEEL GUARD [L] (HG3)
- 12. STEP PLATE COLLAR 5 (BK) × 2
- 13. FOOT PEG COLLAR 12
- 14. FOOT PEG
- 15. FOOT PEG END CAP
- 16. PEDAL TIP DELRIN
- 17. SHIFT ROD 150
- 18. M6 MALE ROD END /M6 MALE REVERSE ROD END
- 19. M6 JAM NUT /M6 REVERSE JAM NUT
- 20. CHANGE ARM L
- 21. SHIFT PEDAL (SPD11)
- 22. SHIFT PEDAL (BK) (SPD8)
- 23. SHIFT BASE (BK)
- 24. COLLAR 40
- 25. SPLIT WASHER M8

TRIUMPH Daytona 675 '06- (R)

- 1. HEX BOLT M8 × 45mm
- 2. BUTTON HEAD M8 × 25mm × 2
- 3. BUTTON HEAD M6 × 15mm
- 4. BUTTON HEAD M8 × 30mm
- 5. BUTTON HEAD M6 × 25mm
- 6. MASTER STAY
- 7. HEEL GUARD [R] (HG18)
- 8. STEP PLATE [R]
- 9. STEP PLATE COLLAR 5 (BK) × 2
- 10. FOOT PEG COLLAR 12
- 11. BRAKE PEDAL (BPD8)
- 12. PEDAL TIP DELRIN
- 13. BRAKE ROD SS
- 14. PLAIN WASHER M6
- 15. E CLIP M6
- 16. FOOT PEG
- 17. FOOT PEG END CAP
- 18. PLAIN NUT M8
- 19. SPLIT WASHER M8



POSITIONS		
1	20mm Forward	0mm
2	10mm Forward	0mm
3	10mm Forward	10mm Up
4	10mm Forward	20mm Up
5	0mm	0mm
6	0mm	10mm Up
7	0mm	20mm Up
8	10mm Back	20mm Up

