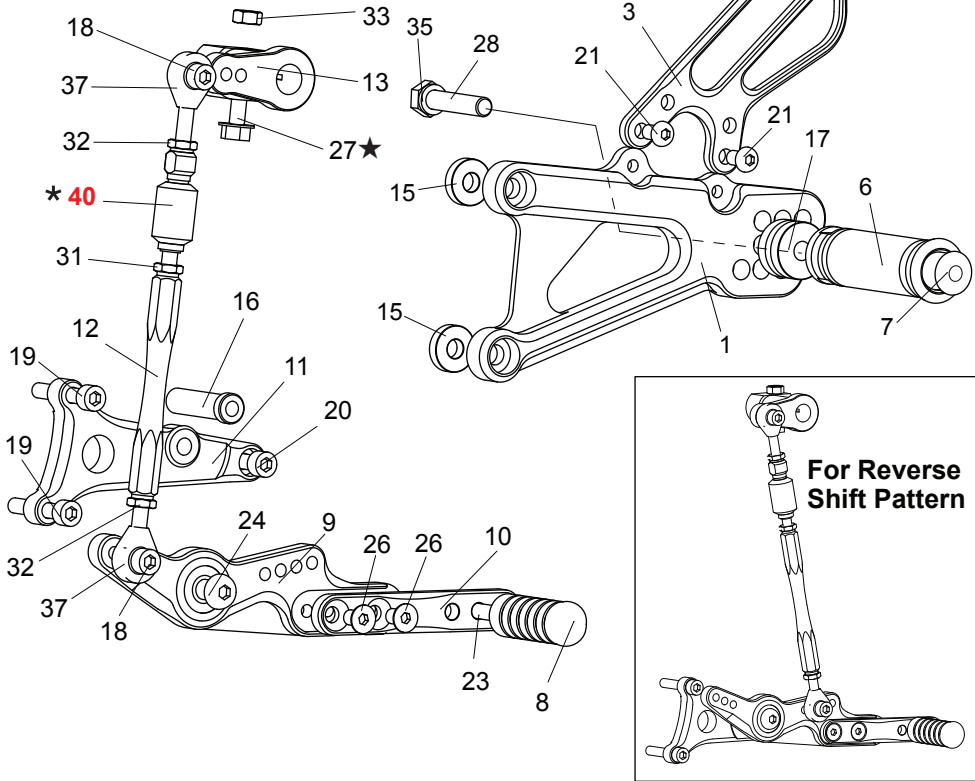


★ Remove the FLANGE BOLT (#27) completely out and put the CHANGE ARM (#13) on the shaft. Push the CHANGE ARM all the way to make sure it is in. Then, install the FLANGE BOLT (#27) back in.

[L]

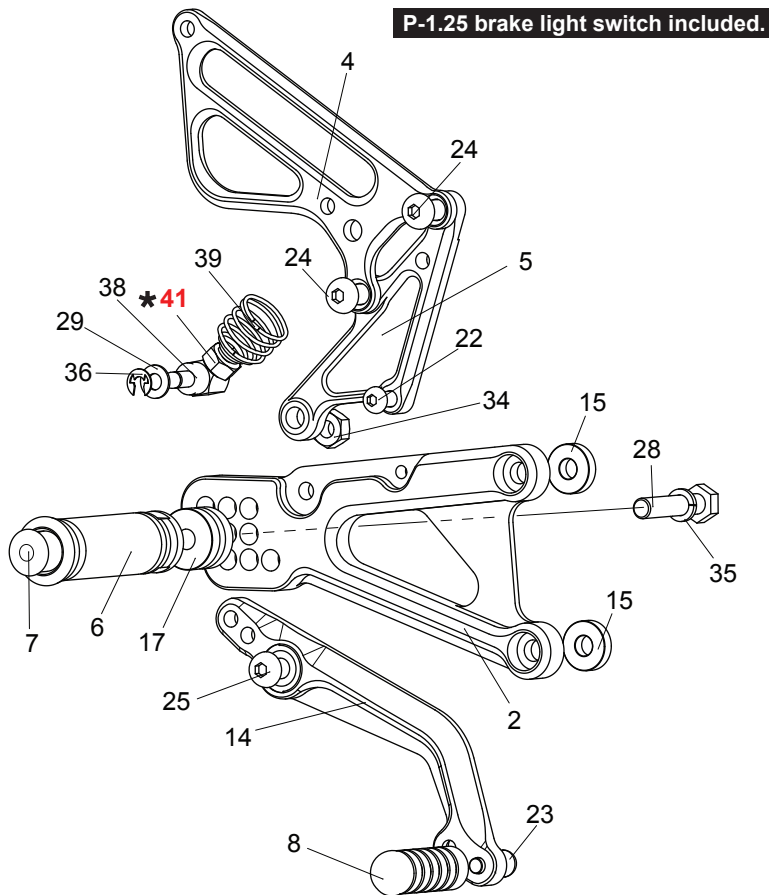


[L]-SIDE

1. (L) STEP PLATE [T-675SP-L]
3. (L) HEEL GUARD [HG-14L]
6. FOOT PEG [PEG]
7. FOOT PEG END CAP [ST-002]
8. PEDAL TIP (DELRIN) [ST-001D]
9. SHIFT PEDAL SPD11(BK) [SPD-11]
10. SHIFT PEDAL SPD8(BK) [SPD-8]
11. SHIFT BASE(BK) [SB-T1]
12. SHIFT ROD 90(BK) [SRD-90B]
13. CHANGE ARM(BK) [CA-5]
15. BASE PLATE COLLAR 5(BK) [BPCLR-5] x2
16. COLLAR 40-6 [CLR-40-6]
17. FOOT PEG COLLAR 15 [PEGCLR-15]
18. SOCKET HEAD M6-15mm [SBT-M615] x2
19. SOCKET HEAD M6-35mm [SBT-M635] x2
20. SOCKET HEAD M6-70mm [SBT-M670]
21. BUTTON HEAD M6-10mm [BBT-M610] x2
23. BUTTON HEAD M6-20mm [BBT-M620]
24. BUTTON HEAD M8-25mm [BBT-M825]
26. FLAT HEAD M6-10mm [FBT-M610] x2
27. FLANGE HEAD M6-25mm [FGBT-M625]
28. HEX HEAD M8-40 [HBT-M840]
31. JAM NUT M6 [JNT-6]
32. REVERSE JAM NUT M6 [JNT-6L] x2
33. PLAIN NUT M6 [NUT-6]
35. SPLIT WASHER M8 [SWS-8]
37. MALE REVERSE ROD END M6 [RDED-M6L] x2
- ★ 40. SENSOR (Triumph PARTS)

Urethane Damper (not pictured)

[R]



[R]-SIDE

2. (R) STEP PLATE [T-675SP-R]
4. (R) HEEL GUARD [HG-23R]
5. MASTER STAY [T-675MS]
6. FOOT PEG [PEG]
7. FOOT PEG END CAP [ST-002]
8. PEDAL TIP (DELRIN) [ST-001D]
14. BRAKE PEDAL WBP180 [BPD-8]
15. BASE PLATE COLLAR 5(BK) [BPCLR-5] x2
17. FOOT PEG COLLAR 15 [PEGCLR-15]
22. BUTTON HEAD M6-15mm [BBT-M615]
23. BUTTON HEAD M6-20mm [BBT-M620]
24. BUTTON HEAD M8-25mm [BBT-M825] x2
25. BUTTON HEAD M8-30mm [BBT-M830]
28. HEX HEAD M8-40 [HBT-M840]
29. WASHER M6 [WS-6]
34. NUT M8 [NUT-8]
35. SPLIT WASHER M8 [SWS-8]
36. E CLIP [ECP-6]
38. BRAKE ROD SS [BRD-SS]
39. RETURN SPRING 40 [RS-RSP]
- ★ 41. NUT (Triumph PARTS)

POSITIONS

1	20mm Forward	0mm
2	10mm Forward	0mm
3	10mm Forward	10mm Up
4	10mm Forward	20mm Up
5	0mm	0mm
6	0mm	10mm Up
7	0mm	20mm Up
8	10mm Back	20mm Up