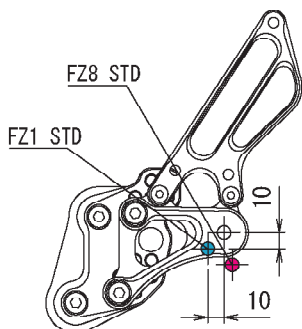
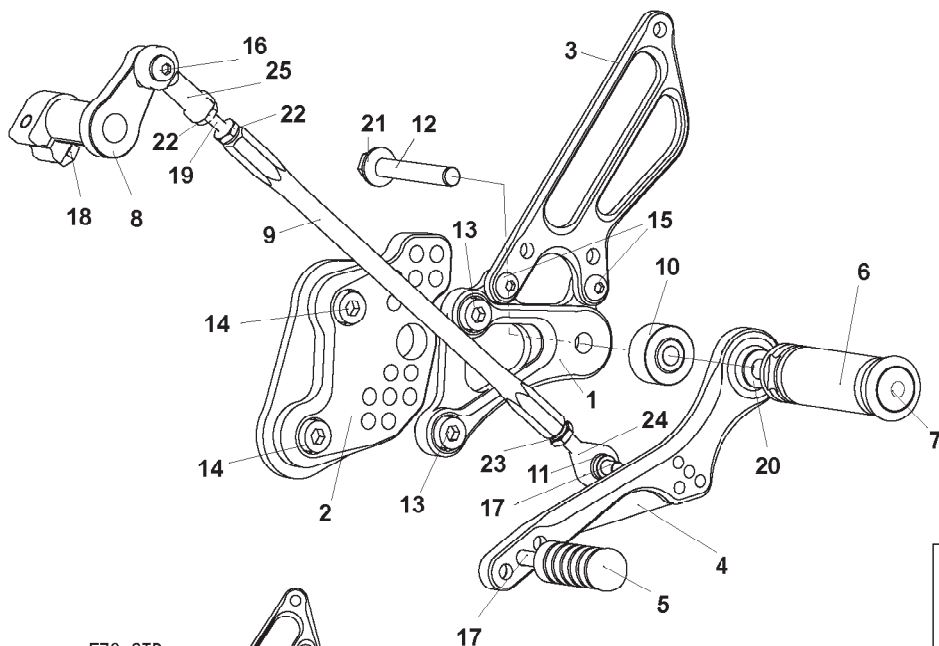


FZ-1 '06- / FZ-8 '10- Ver.2

(L)

Shorter side of stud bolt M8-60 (#12)
should go in the peg.



Flat side of foot peg bearing collar
12.5 (#10) should face step plate(#1).
With the stepped side facing out
toward pedal bearing.

Smooth front of peg washer M8 (#20)
should face pedal bearing, with the
rougher, flat side facing out toward peg.

1. STEP PLATE [L]
2. BASE PLATE [L]
3. HEEL GUARD [L](HG3)
4. SHIFT PEDAL (SPD4)
5. PEDAL TIP DELRIN
6. FOOT PEG
7. FOOT PEG END CAP
8. CHANGE ARM (CA1,BK)
9. SHIFT ROD 210
10. FOOT PEG BEARING COLLAR 12.5
11. ROD END COLLAR 3
12. STUD BOLT M8-60
13. SOCKET HEAD M8 × 15mm × 2
14. SOCKET HEAD M8 × 20mm × 2
15. BUTTON HEAD M6 × 10mm × 2
16. BUTTON HEAD M6 × 15mm
17. BUTTON HEAD M6 × 20mm × 2
18. FLANGE HEAD M6 × 20mm
19. STUD M6
20. PEG WASHER M8
21. FLANGE NUT M8
22. JAM NUT M6 × 2
23. REVERSE JAM NUT M6
24. MALE REVERSE ROD END M6
25. FEMALE ROD END M6

POSITIONS

1	10mm Back	10mm Up
2	10mm Back	20mm Up
3	20mm Back	10mm Up
4	20mm Back	20mm Up
5	20mm Back	30mm Up
6	30mm Back	20mm Up
7	30mm Back	30mm Up

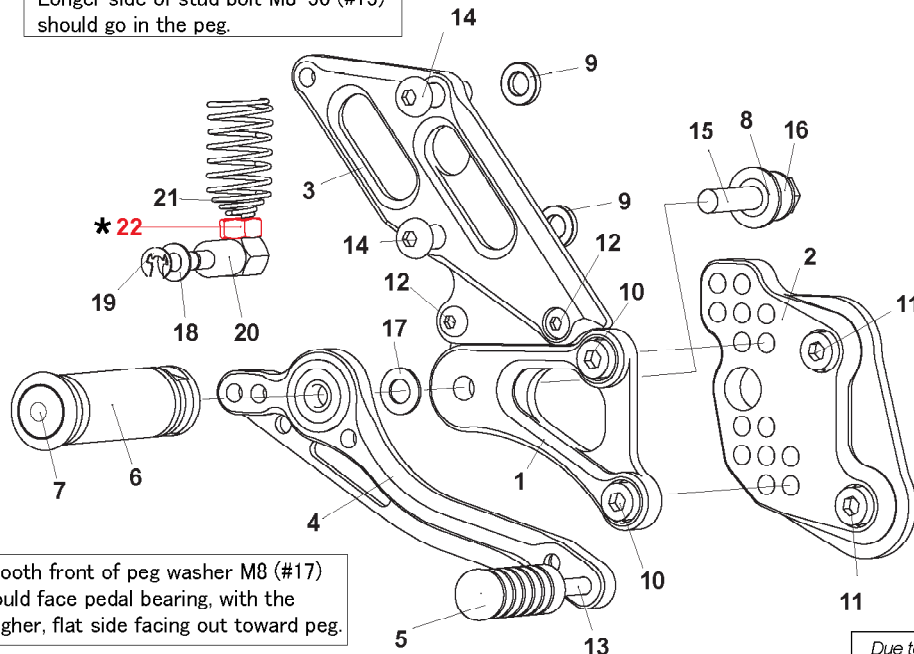
All measurements are in relation to stock position (0 mm)



(R) P-1.25 brake light switch included.

Longer side of stud bolt M8-50 (#15)
should go in the peg.

Flat side of bearing collar SUS (#8)
should face step plate (#1), with the
rounded side facing out toward pedal bearing.



Smooth front of peg washer M8 (#17)
should face pedal bearing, with the
rougher, flat side facing out toward peg.

1. STEP PLATE [R]
2. BASE PLATE [R]
3. MASTER STAY
4. BRAKE PEDAL 150(BPD1)
5. PEDAL TIP DELRIN
6. FOOT PEG
7. FOOT PEG END CAP
8. BEARING COLLAR SUS
9. MASTER STAY COLLAR 3(BK) × 2
10. SOCKET HEAD M8 × 15mm × 2
11. SOCKET HEAD M8 × 20mm × 2
12. BUTTON HEAD M6 × 10mm × 2
13. BUTTON HEAD M6 × 20mm
14. BUTTON HEAD M8 × 20mm × 2
15. STUD BOLT M8-50
16. FLANGE NUT M8
17. PEG WASHER M8
18. PLAIN WASHER M6
19. E-CLIP 5
20. BRAKE ROD M40
21. RETURN SPRING(OPTION)
- * 22. NUT M8(OEM)

Due to running improvements in the designs of Sato parts, some new replacement parts may look somewhat different than the original parts with the same part #. These slight differences are mostly cosmetic and have no effect on performance.