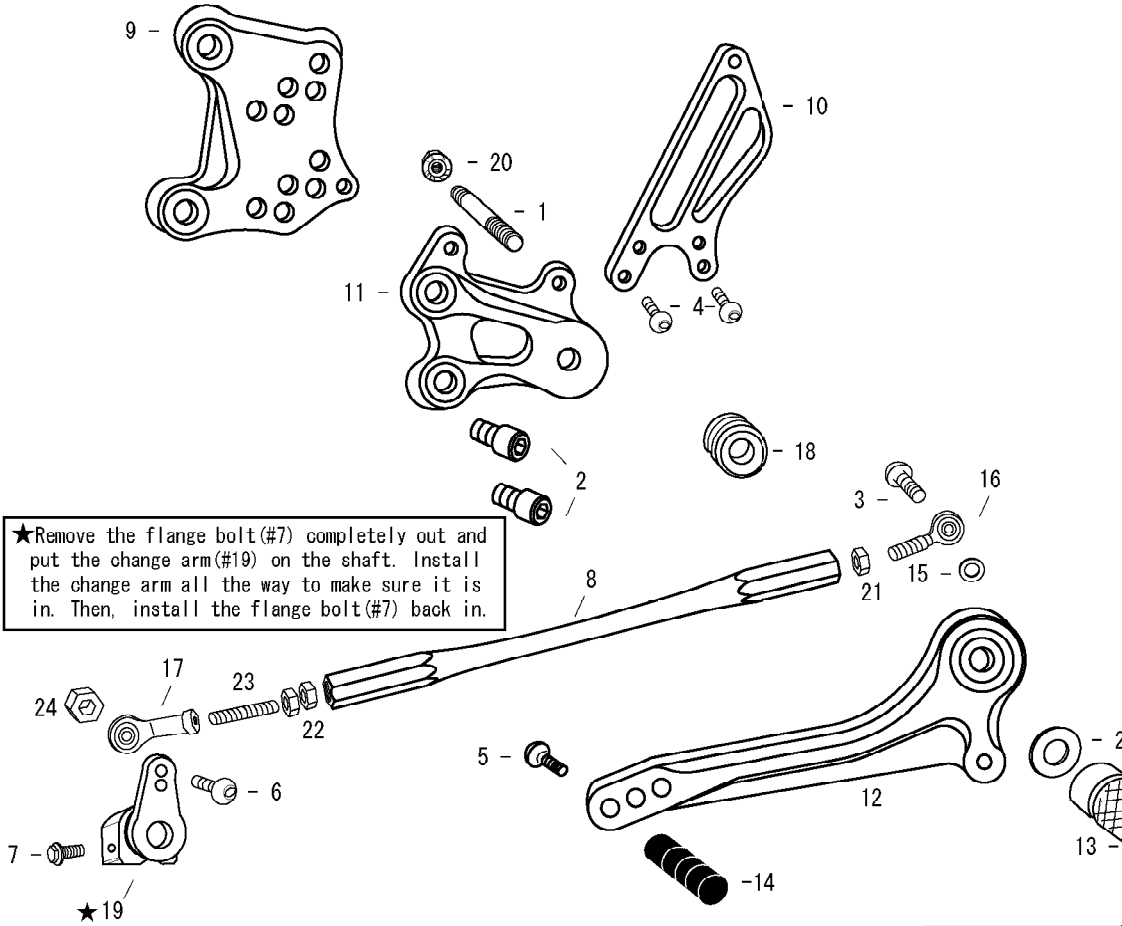


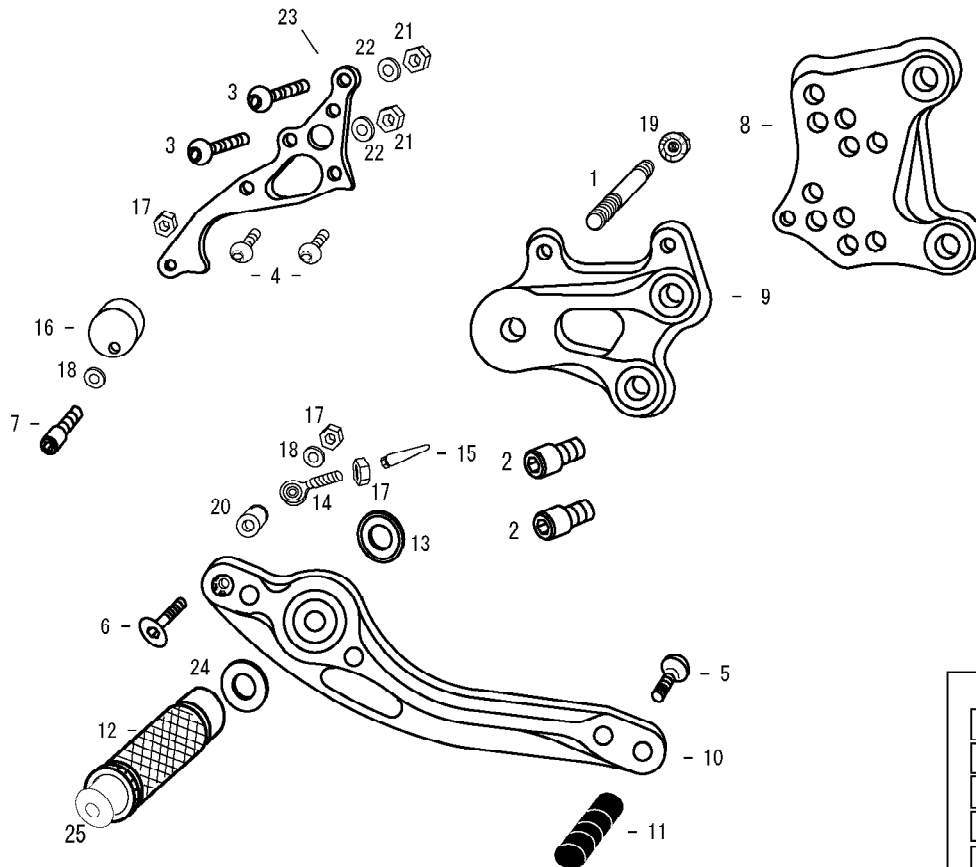
Aprilia RSV1000 R/Factory Type2 (L)



1. STUD BOLT LONG
2. SOCKET HEAD M8 × 15mm × 2
3. BUTTON HEAD M6 × 20mm
4. BUTTON HEAD M6 × 10mm × 2
5. BUTTON HEAD M6 × 20mm
6. BUTTON HEAD M6 × 25mm
7. FLANGE HEAD M6 × 20mm
8. SHIFT ROD 130
9. BASE PLATE [L]
10. HEEL GUARD [L] (HG3)
11. STEP PLATE [L]
12. SHIFT PEDAL 70-2 (SPD6)
13. FOOT PEG
14. PEDAL TIP DELRIN
15. ROD END COLLAR 3
16. MALE REVERSE ROD END M6
17. FEMALE ROD END M6
18. FOOT PEG BEARING COLLAR 10
19. CHANGE ARM S (BK)
20. FLANGE NUT M8
21. REVERSE JAM NUT M6
22. JAM NUT M6
23. STUD M6
24. PLAIN NUT M6
25. PEG WASHER M8
26. FOOT PEG END CAP



Aprilia RSV1000 R/Factory Type2 (R)



1. STUD BOLT SHORT
2. SOCKET HEAD M8 × 15mm × 2
3. BUTTON HEAD M6 × 20mm × 2
4. BUTTON HEAD M6 × 10mm × 2
5. BUTTON HEAD M6 × 20mm
6. FLAT HEAD M5 × 35mm
7. SOCKET HEAD M5 × 25mm
8. BASE PLATE [R]
9. STEP PLATE [R]
10. BRAKE PEDAL 180-2 (BPD6)
11. PEDAL TIP DELRIN
12. FOOT PEG
13. BEARING COLLAR SUS
14. MALE ROD END M5
15. PUSH ROD (BK)
16. BRAKE PEDAL STOPPER DELRIN
17. PLAIN NUT M5 × 2
18. PLAIN WASHER M5 × 2
19. FLANGE NUT M8
20. ROD END COLLAR 10 (BK)
21. PLAIN NUT M6 × 2
22. PLAIN WASHER M6 × 2
23. BRAKE MASTER STAY
24. PEG WASHER M8
25. FOOT PEG END CAP

POSITIONS		
1	10mm Forward	10mm Up
2	0mm	10mm Up
3	0mm	20mm Up
4	10mm Back	10mm Up
5	10mm Back	20mm Up

All measurements are in relation to stock position (0 mm)