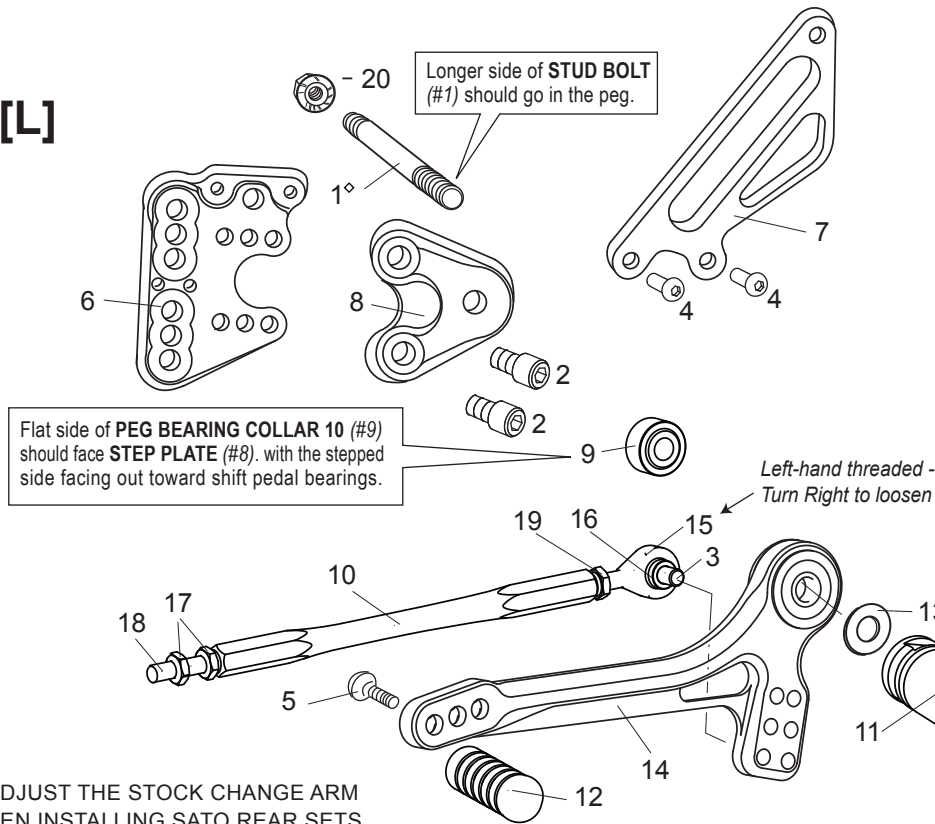


# SUZUKI GSX-R1000 '05-'06 REAR SETS (part# S-GSX105RS)

[L]



※ADJUST THE STOCK CHANGE ARM  
WHEN INSTALLING SATO REAR SETS.

## [L] SIDE

1. STUD BOLT M8×65mm [STBT-L]
2. SOCKET HEAD M8×15mm [SBT-M815] ×2
3. SOCKET HEAD M6×20mm [SBT-M620]
4. BUTTON HEAD M6×10mm [BBT-M610] ×2
5. BUTTON HEAD M6×20mm [BBT-M620]
6. BASE PLATE [L] [S-GSX105BP-L]
7. HEEL GUARD [L] [HG-8L]
8. STEP PLATE [L] [S-GSX105SP-L]
9. PEG BEARING COLLAR 10 [PEGBGCLR-10]
10. SHIFT ROD 130 [SRD-130]
11. FOOT PEG [PEG]
12. PEDAL TIP (DELRIN) [ST-001D18]
13. PEG WASHER M8 [PWS-8]
14. SHIFT PEDAL 60-70 [SPD-0102]
15. MALE REVERSE ROD END M6 [RDED-M6L]
16. ROD END COLLAR 3 (GD) [RDED-CLR3]
17. JAM NUT M6 [JNT-6] ×2
18. STUD M6 [STUD-M6]
19. REVERSE JAM NUT M6 [JNT-6L]
20. FLANGE NUT M8 [FNT-8]
21. FOOT PEG END CAP [ST-002]

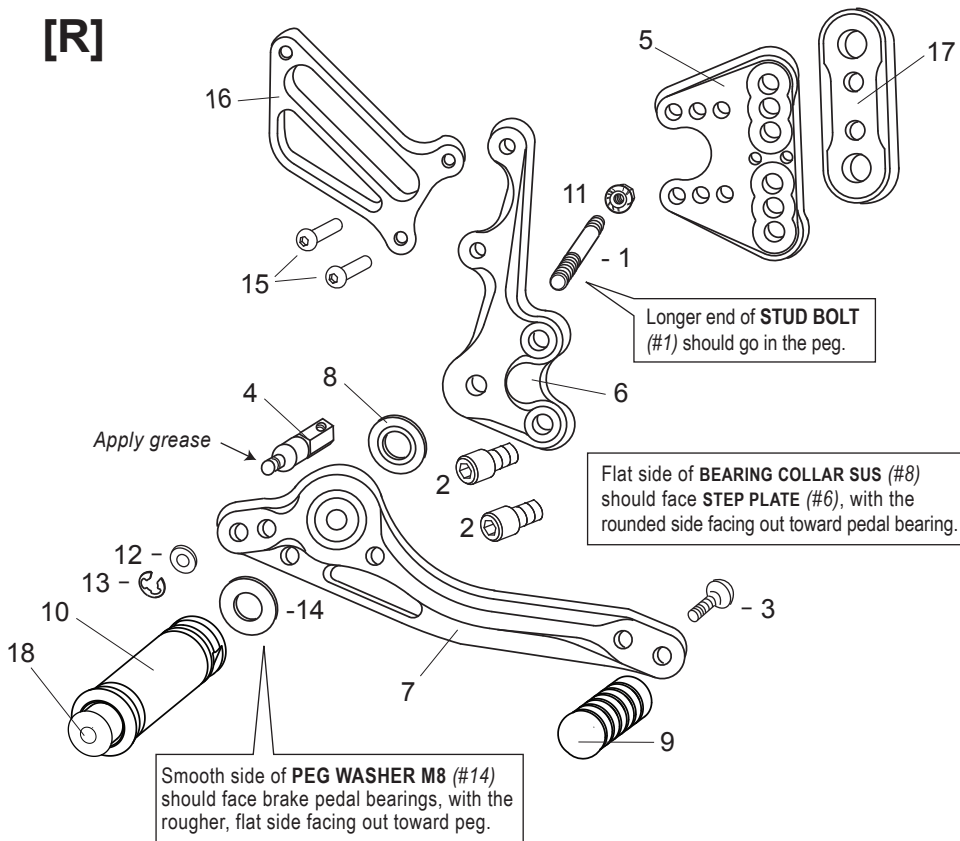
## [R] SIDE

1. STUD BOLT M8×55mm [STBT-S]
2. SOCKET HEAD M8×15mm [SBT-M815] ×2
3. BUTTON HEAD M6×20mm [BBT-M620]
4. BRAKE ROD M40 [BRD-M40]
5. BASE PLATE [R] [S-GSX105BP-R]
6. STEP PLATE [R] [S-GSX105SP-R]
7. BRAKE PEDAL 150 [BPD-1]
8. BEARING COLLAR SUS [BGCLR-SUS]
9. PEDAL TIP (DELRIN) [ST-001D18]
10. FOOT PEG [PEG]
11. FLANGE NUT M8 [FNT-8]
12. PLAIN WASHER M6 [WS-6]
13. E-CLIP [ECP-6]
14. PEG WASHER M8 [PWS-8]
15. BUTTON HEAD M6×25mm [BBT-M625] ×2
16. HEEL GUARD [R] [HG-1R]
17. BASE PLATE COLLAR 5L(BK) [BPCLR-5L]
18. FOOT PEG END CAP [ST-002]

### Not Pictured:

- BRAKE LIGHT SWITCH P-1.25 [BSW-125]
- BRAKE HOSE

[R]



### POSITIONS

	10mm Foward	10mm Up
1	10mm Foward	10mm Up
2	10mm Foward	20mm Up
3	10mm Foward	30mm Up
4	0mm	10mm Up
5	0mm	20mm Up
6	0mm	30mm Up
7	10mm Back	10mm Up
8	10mm Back	20mm Up
9	10mm Back	30mm Up

All measurements are in relation  
to stock position (0 mm)