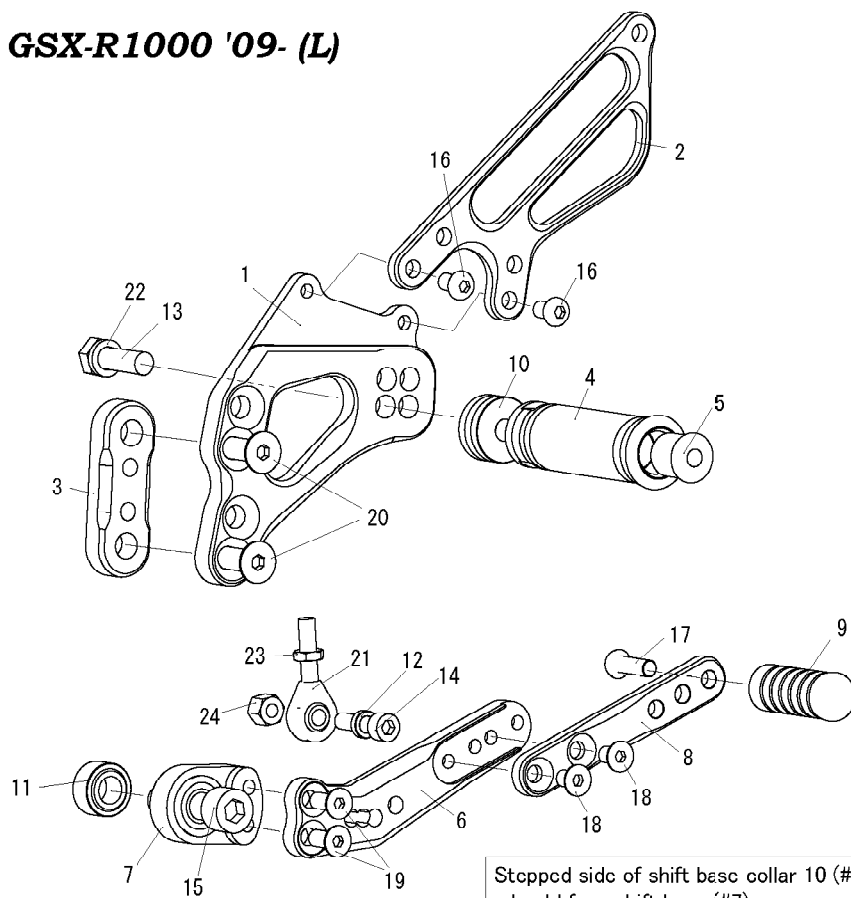


## GSX-R1000 '09- (L)

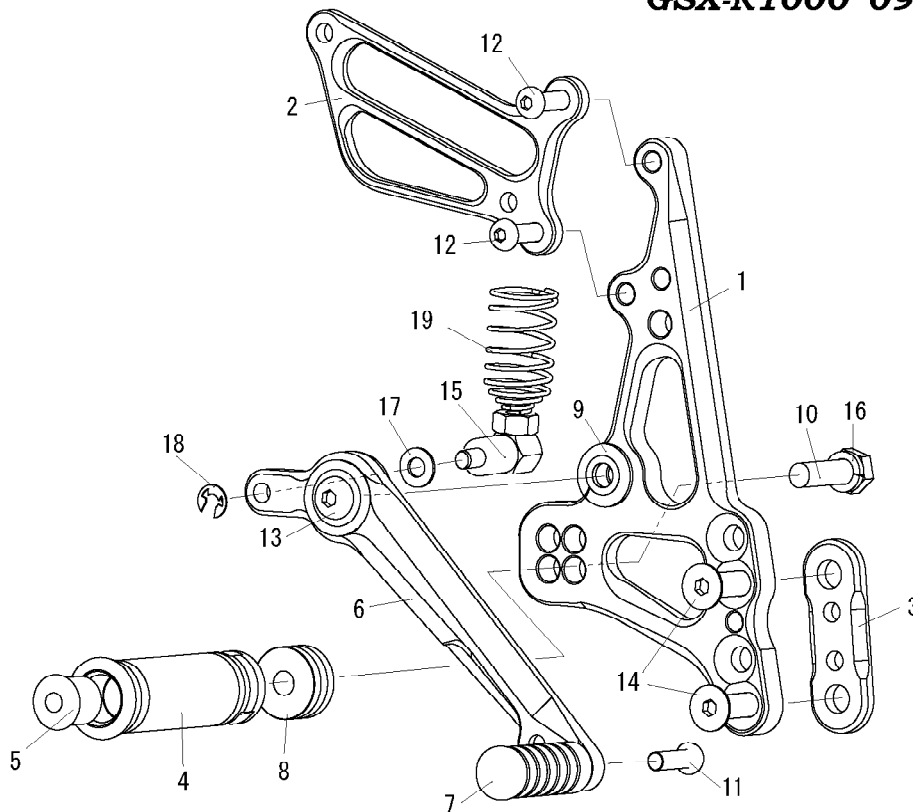


Stepped side of shift base collar 10 (#11) should face shift base (#7).

1. STEP PLATE [L]
2. HEEL GUARD [L] (HG14)
3. BASE PLATE COLLAR 10 (BK)
4. FOOT PEG
5. FOOT PEG END CAP
6. SHIFT BASE #3 (BK)
7. SHIFT BASE (BK)
8. SHIFT PEDAL (BK) (SPD8)
9. PEDAL TIP DELRIN
10. FOOT PEG COLLAR 12
11. SHIFT BASE COLLAR 10
12. ROD END COLLAR 3
13. HEX BOLT M8 × 40mm
14. SOCKET HEAD M6 × 25mm
15. SOCKET HEAD M10 × 40mm (P-1. 25)
16. BUTTON HEAD M6 × 10mm × 2
17. BUTTON HEAD M6 × 25mm
18. FLAT HEAD M6 × 10mm × 2
19. FLAT HEAD M6 × 15mm × 2
20. FLAT HEAD M8 × 35mm × 2
21. MALE REVERSE ROD END M6
22. SPLIT WASHER M8
23. REVERSE JAM NUT M6
24. LOCK NUT M6



## GSX-R1000 '09- (R)



Flat side of bearing collar SUS (#9) should face step plate (#1), with the rounded side facing out toward pedal bearing.

1. STEP PLATE [R]
2. HEEL GUARD [R] (HG1)
3. BASE PLATE COLLAR 5 (BK)
4. FOOT PEG
5. FOOT PEG END CAP
6. BRAKE PEDAL (BPD9)
7. PEDAL TIP DELRIN
8. FOOT PEG COLLAR 15
9. BEARING COLLAR SUS
10. HEX BOLT M8 × 40mm
11. BUTTON HEAD M6 × 20mm
12. BUTTON HEAD M6 × 25mm × 2
13. BUTTON HEAD M8 × 25mm
14. FLAT HEAD M8 × 25mm × 2
15. BRAKE ROD M40
16. SPLIT WASHER M8
17. PLAIN WASHER M6
18. E-CLIP
19. RETURN SPRING 40 (OPTION)

### POSITIONS

1	0mm Back	14mm Up
2	0mm Back	24mm Up
3	10mm Back	14mm Up
4	10mm Back	24mm Up
5	2.5mm Back	29mm Up
6	2.5mm Back	39mm Up
7	12.5mm Back	29mm Up
8	12.5mm Back	39mm Up

OUR REAR SETS TRIPLES THE NUMBER OF POSSIBLE MOUNTING POSITIONS TO 8, COMPARED TO 3 POSITIONS PROVIDED BY THE STOCK MOUNT.

All measurements are in relation to stock position (0 mm)