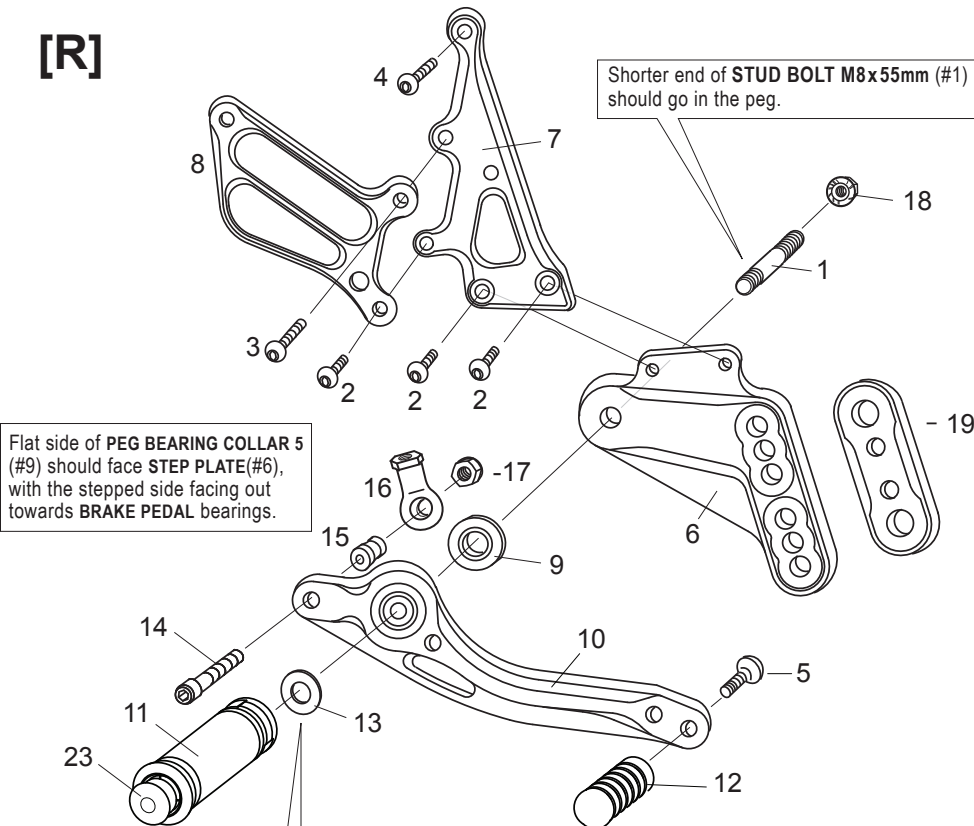


**[L] SIDE**

1. STUD BOLT M8x50mm [STBT-50]
2. BUTTON HEAD M6x10mm [BBT-M610] x 2
3. BUTTON HEAD M6x25mm [BBT-M625]
4. FLAT HEAD M6x10mm [FBT-M610] x 2
5. SOCKET HEAD M6x30mm [SBT-M630]
6. FLAT HEAD M6x15mm [FBT-M615] x 2
7. SOCKET HEAD M10x40mm (P-1.25) [SBT-M1040]
8. (L) STEP PLATE [S-GSX606SP-L]
9. FOOT PEG COLLAR 12 [PEGCLR-12]
10. FOOT PEG [PEG]
11. (L) HEEL GUARD [HG-3L]
12. PEDAL TIP (DELRIN) [ST-001D / ST-001D18]
13. SHIFT BASE #1(BK) [SB-S1]
14. SHIFT BASE #2(BK) [SB-S2]
15. SHIFT PEDAL [SPD8-BK]
16. MALE REVERSE ROD END M6 [RDED-M6L]
17. LOCK NUT M6 [LNT-6]
18. REVERSE JAM NUT M6 [JNT-6L]
19. SHIFT BASE COLLAR 10(SUS) [SBCLR10]
20. FLANGE NUT M8 [FNT-8]
21. ROD END COLLAR 3(GD) [RDED-CLR3]
22. FOOT PEG END CAP [ST-002]

**[R]**

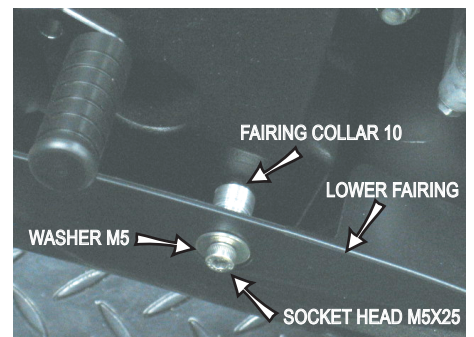
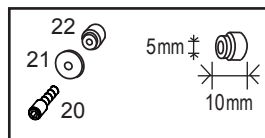


**[R] SIDE**

1. STUD BOLT M8x55mm [STBT-S]
2. BUTTON HEAD M6x10mm [BBT-M610] x 3
3. BUTTON HEAD M6x25mm [BBT-M625]
4. BUTTON HEAD M6x20mm [BBT-M620]
5. BUTTON HEAD M6x20mm [BBT-M620]
6. (R) STEP PLATE [S-GSX606SP-R]
7. MASTER STAY [S-GSX606MS]
8. (R) HEEL GUARD [HG-13R]
9. PEG BEARING COLLAR 5 [PEGBGCLR-5]
10. BRAKE PEDAL 160 [BPD-3]
11. FOOT PEG [PEG]
12. PEDAL TIP (DELRIN) [ST-001D / ST-001D18]
13. PEG WASHER M8 [PWS-8]
14. SOCKET HEAD M6x40mm [SBT-M640]
15. BRAKE ROD COLLAR 15(BK) [RDED-CLR15]
16. FEMALE ROD END 6-M8 [RDED-F6-8]
17. LOCK NUT M6 [LNT-6]
18. FLANGE NUT M8 [FNT-8]
19. BASE PLATE COLLAR 5L(BK) [BPCLR-5L]
20. SOCKET HEAD M5x25mm [SBT-M525]
21. WASHER M5 [WS-5]
22. FAIRING COLLAR 10(SV) [CLR-GSX606]
23. FOOT PEG END CAP [ST-002]

*Not Pictured:*

- BRAKE LIGHT SWITCH P-1.25 [BSW-125]



Bolt and spacer kit for the stock fairing - This will provide clearance for the Rear Sets.