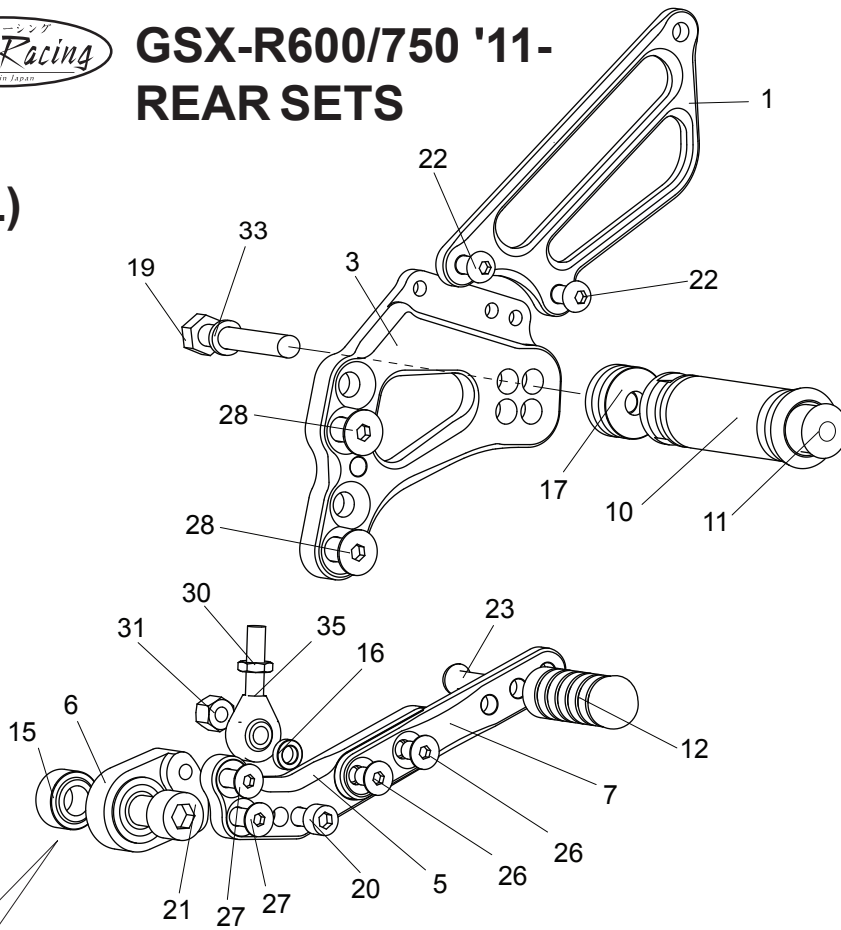


GSX-R600/750 '11- REAR SETS

(L)



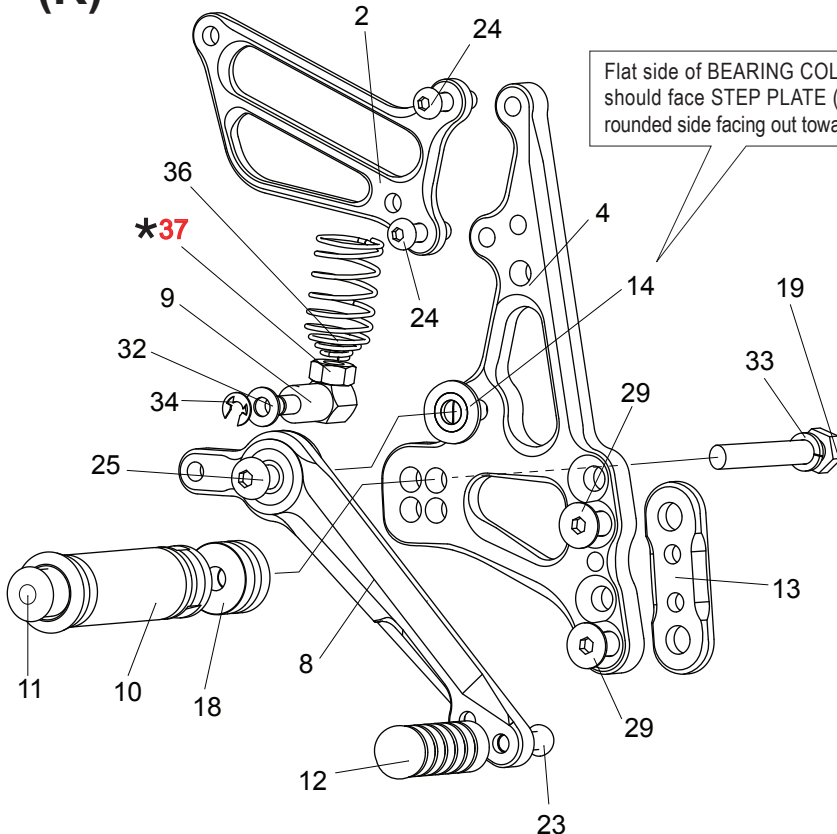
Stepped side of SHIFT BASE COLLAR 10 (#15) should face SHIFT BASE SB-S1(#6).

[L] SIDE

1. HEEL GUARD [L] (HG2)
3. SHIFT BASE [L]
5. SHIFT BASE (SB-S2, BK)
6. SHIFT BASE (SB-S1, BK)
7. SHIFT PEDAL (SPD8, BK)
10. FOOT PEG
11. FOOT PEG END CAP
12. PEDAL TIP DELRIN
15. SHIFT BASE COLLAR 10(SUS)
16. ROD END COLLAR 3
17. FOOT PEG COLLAR 12
19. HEX HEAD M8-40mm
20. SOCKET HEAD M6-30mm
21. SOCKET HEAD M10-40mm (P-1.25 UNI)
22. BUTTON HEAD M6-10mm X 2
23. BUTTON HEAD M6-20mm
26. FLAT HEAD M6-10mm X 2
27. FLAT HEAD M6-15mm X 2
28. FLAT HEAD M8-20mm X 2
30. REVERSE JAM NUT M6
31. LOCK NUT M6
33. SPLIT WASHER M8
35. MALE REVERSE ROD END M6

(R)

P-1.25 brake light switch included.



Flat side of BEARING COLLAR SUS (#14) should face STEP PLATE (#4), with the rounded side facing out toward pedal bearing.

[R] SIDE

2. HEEL GUARD [R] (HG1)
4. STEP PLATE [R]
8. BRAKE PEDAL WBP136 (BPD9)
9. BRAKE ROD M40
10. FOOT PEG
11. FOOT PEG END CAP
12. PEDAL TIP DELRIN
13. BASE PLATE COLLAR 5L(BK)
14. FOOT PEG BEARING COLLAR SUS
18. FOOT PEG COLLAR 15
19. HEX HEAD M8-40mm
23. BUTTON HEAD M6-20mm
24. BUTTON HEAD M6-25mm X 2
25. BUTTON HEAD M8-25mm
29. FLAT HEAD M8-25mm X 2
32. WASHER M6
33. SPLIT WASHER M8
34. E CLIP
36. RETURN SPRING 40
- ★ 37. NUT M8 (SUZUKI PARTS)

Due to running improvements in the designs of Sato parts, some new replacement parts may look somewhat different than the original parts with the same part #. These slight differences are mostly cosmetic and have no effect on performance.