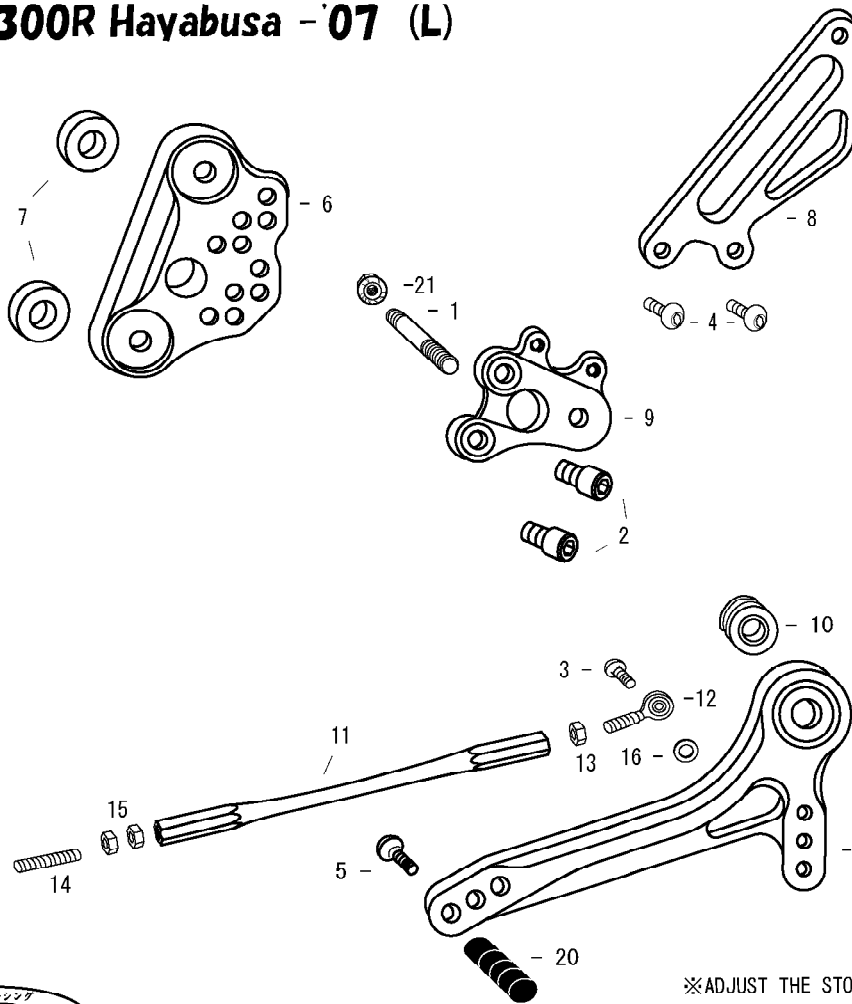


GSX1300R Hayabusa -'07 (L)

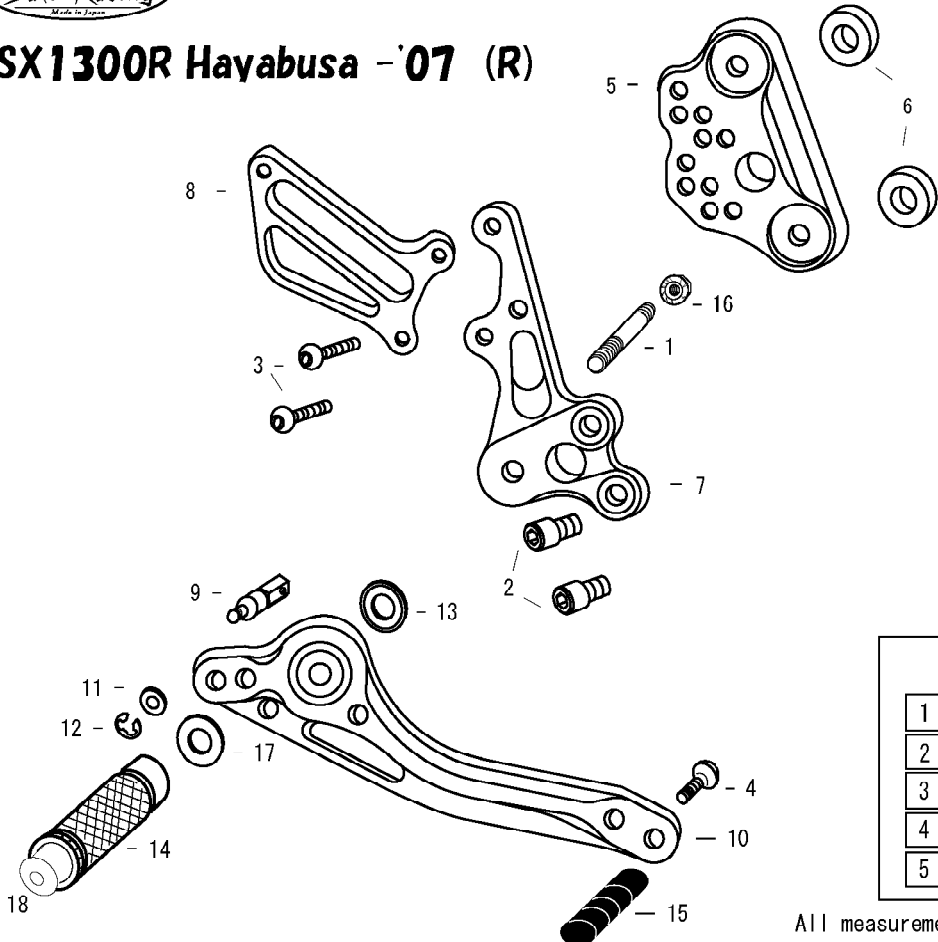


1. STUD BOLT LONG
2. SOCKET HEAD M8 × 15mm × 2
3. BUTTON HEAD M6 × 20mm
4. BUTTON HEAD M6 × 10mm × 2
5. BUTTON HEAD M6 × 20mm
6. BASE PLATE [L]
7. BASE PLATE COLLAR 8 (BK) × 2
8. HEEL GUARD [L] (HG8)
9. STEP PLATE [L]
10. FOOT PEG BEARING COLLAR
11. SHIFT ROD 145
12. MALE REVERSE ROD END M6
13. REVERSE JAM NUT M6
14. STUD M6
15. JAM NUT M6 × 2
16. ROD END COLLAR 3
17. SHIFT PEDAL 60 (SPD1)
18. PEG WASHER M8
19. FOOT PEG
20. PEDAL TIP DELRIN
21. FLANGE NUT M8
22. FOOT PEG END CAP



※ADJUST THE STOCK CHANGE ARM WHEN INSTALLING SATO REAR SETS.

GSX1300R Hayabusa -'07 (R)



1. STUD BOLT SHORT
2. SOCKET HEAD M8 × 15mm × 2
3. BUTTON HEAD M6 × 25mm × 2
4. BUTTON HEAD M6 × 25mm
5. BASE PLATE [R]
6. BASE PLATE COLLAR 8 (BK) × 2
7. STEP PLATE [R]
8. HEEL GUARD [R] (HG1)
9. BRAKE ROD M40
10. BRAKE PEDAL 150 (BPD1)
11. PLAIN WASHER M6
12. E CLIP M6
13. BEARING COLLAR SUS
14. FOOT PEG
15. PEDAL TIP DELRIN
16. FLANGE NUT M8
17. PEG WASHER M8
18. FOOT PEG END CAP

POSITIONS

1	10mm Back	15mm Up
2	20mm Back	15mm Up
3	20mm Back	25mm Up
4	30mm Back	25mm Up
5	30mm Back	35mm Up

All measurements are in relation to stock position (0 mm)