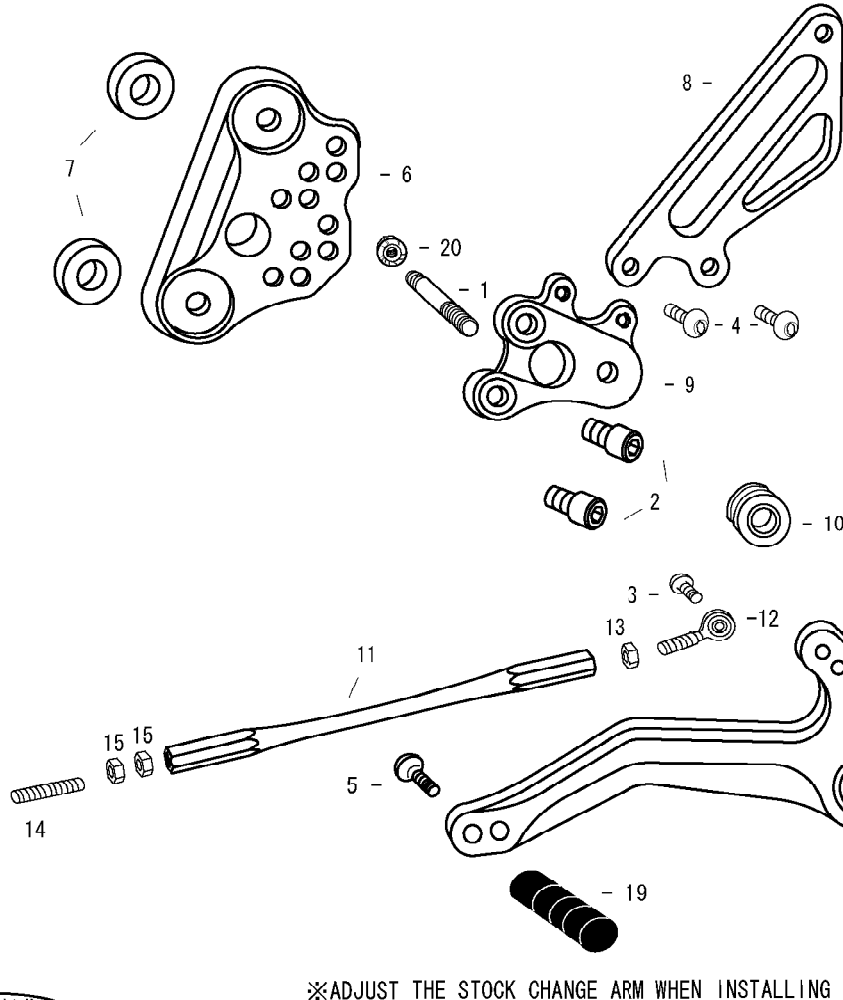


GSX1300R Hayabusa -'07 REVERSE PATTERN (L)

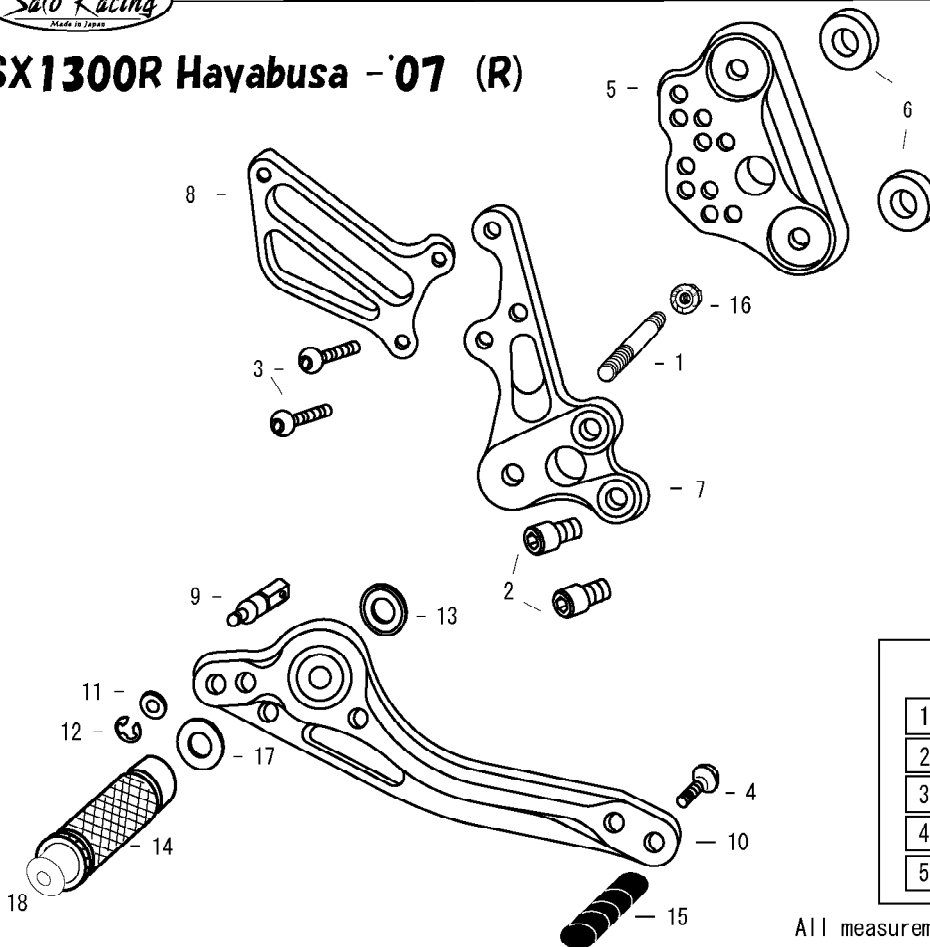


1. STUD BOLT LONG
2. SOCKET HEAD M8 × 15mm × 2
3. BUTTON HEAD M6 × 15mm
4. BUTTON HEAD M6 × 10mm × 2
5. BUTTON HEAD M6 × 20mm
6. BASE PLATE [L]
7. BASE PLATE COLLAR 8 (BK) × 2
8. HEEL GUARD [L] (HG8)
9. STEP PLATE [L]
10. FOOT PEG BEARING COLLAR 10
11. SHIFT ROD 160
12. MALE REVERSE ROD END M6
13. REVERSE JAM NUT M6
14. STUD M6
15. JAM NUT M6 × 2
16. SHIFT PEDAL (SPD5)
17. PEG WASHER M8
18. FOOT PEG
19. PEDAL TIP DELRIN
20. FLANGE NUT M8
21. FOOT PEG END CAP

※ADJUST THE STOCK CHANGE ARM WHEN INSTALLING SATO REAR SETS.



GSX1300R Hayabusa -'07 (R)



1. STUD BOLT SHORT
2. SOCKET HEAD M8 × 15mm × 2
3. BUTTON HEAD M6 × 25mm × 2
4. BUTTON HEAD M6 × 25mm
5. BASE PLATE [R]
6. BASE PLATE COLLAR 8 (BK) × 2
7. STEP PLATE [R]
8. HEEL GUARD [R] (HG1)
9. BRAKE ROD M40
10. BRAKE PEDAL 150 (BPD1)
11. PLAIN WASHER M6
12. E CLIP M6
13. BEARING COLLAR SUS
14. FOOT PEG
15. PEDAL TIP DELRIN
16. FLANGE NUT M8
17. PEG WASHER M8
18. FOOT PEG END CAP

POSITIONS		
1	10mm Back	15mm Up
2	20mm Back	15mm Up
3	20mm Back	25mm Up
4	30mm Back	25mm Up
5	30mm Back	35mm Up

All measurements are in relation to stock position (0 mm)