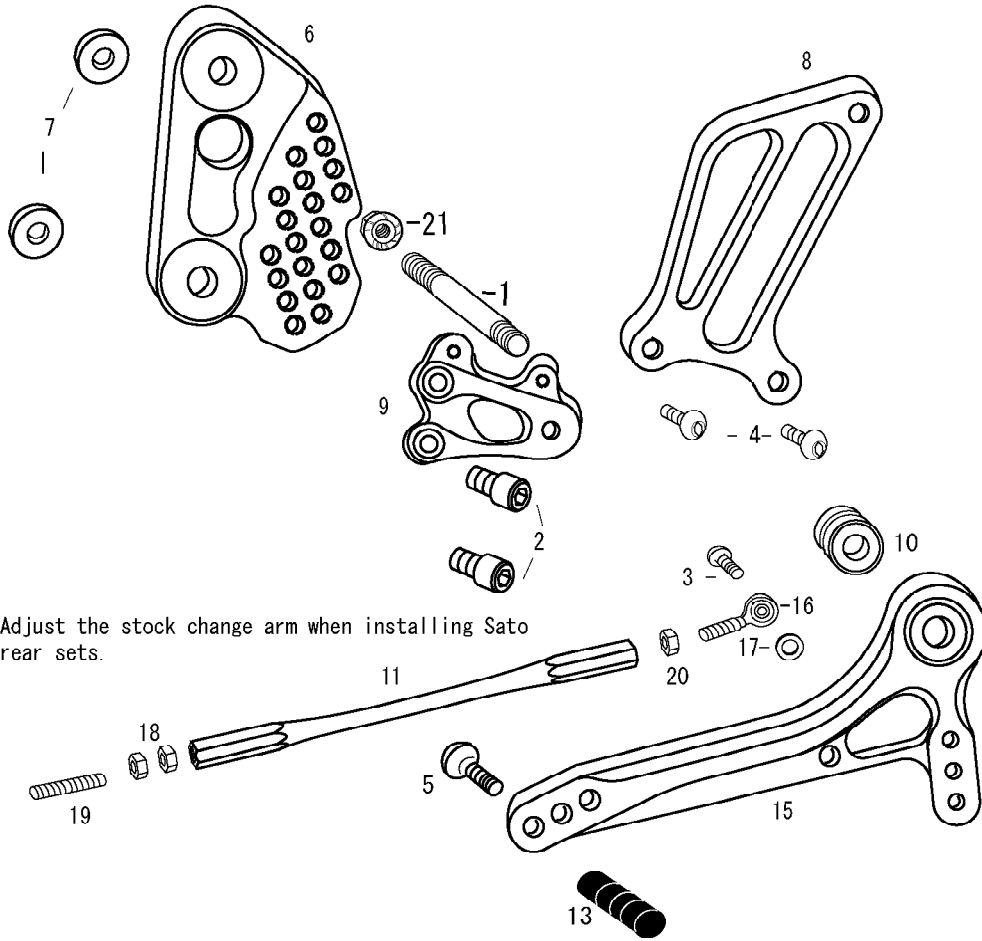


GSX1300R Drag (L)

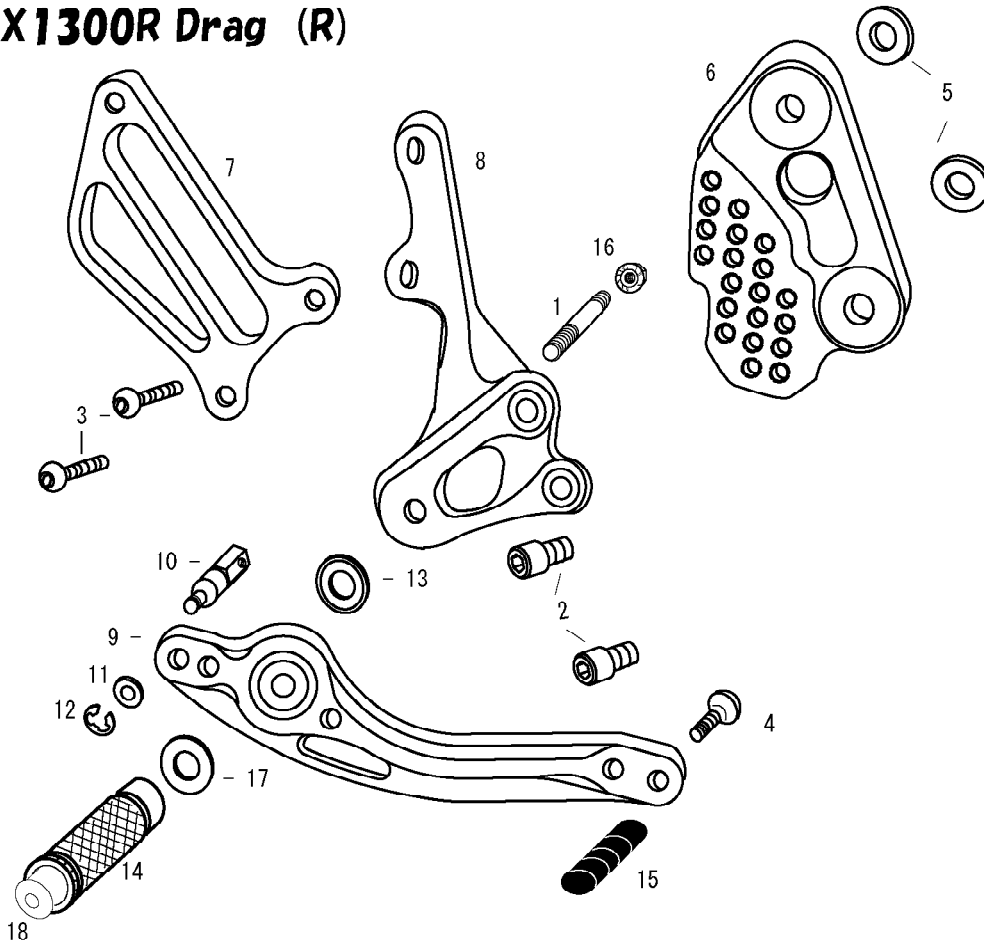


*Adjust the stock change arm when installing Sato rear sets.

1. STUD BOLT LONG
2. SOCKET HEAD M8 × 15mm × 2
3. BUTTON HEAD M6 × 20mm
4. BUTTON HEAD M6 × 10mm × 2
5. BUTTON HEAD M6 × 20mm
6. BASE PLATE [L]
7. BASE PLATE COLLAR 2 (BK)
8. HEEL GUARD [L] (HG1)
9. STEP PLATE [L]
10. FOOT PEG BEARING COLLAR 15
11. SHIFT ROD 170
12. FOOT PEG
13. PEDAL TIP DELRIN
14. PEG WASHER M8
15. SHIFT PEDAL 70 (SPD2)
16. MALE REVERSE ROD END M6
17. ROD END COLLAR 3
18. JAM NUT M6
19. STUD M6
20. REVERSE JAM NUT M6
21. FLANGE NUT M8
22. FOOT PEG END CAP



GSX1300R Drag (R)



1. STUD BOLT SHORT
2. SOCKET HEAD M8 × 15mm × 2
3. BUTTON HEAD M6 × 25mm
4. BUTTON HEAD M6 × 25mm
5. BASE PLATE COLLAR 2 (BK)
6. BASE PLATE [R]
7. HEEL GUARD [R] (HG1)
8. STEP PLATE [R]
9. BRAKE PEDAL 180 (BPD2)
10. BRAKE ROD M40
11. PLAIN WASHER M6
12. E CLIP M6
13. BEARING COLLAR SUS
14. FOOT PEG
15. PEDAL TIP DELRIN
16. FLANGE NUT M8
17. PEG WASHER M8
18. FOOT PEG END CAP