

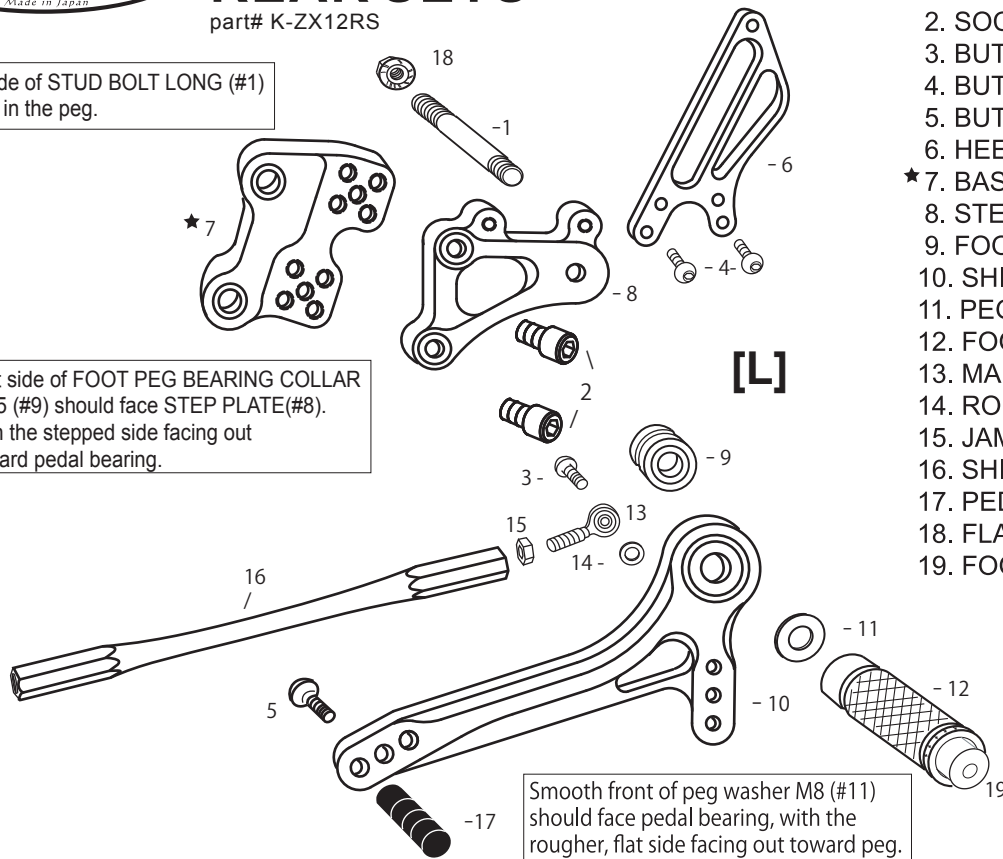
KAWASAKI ZX-12R ('00-'06) REAR SETS

part# K-ZX12RS

Shorter side of STUD BOLT LONG (#1)
should go in the peg.

Flat side of FOOT PEG BEARING COLLAR
12.5 (#9) should face STEP PLATE (#8),
with the stepped side facing out
toward pedal bearing.

Smooth front of peg washer M8 (#11)
should face pedal bearing, with the
rougher, flat side facing out toward peg.



1. STUD BOLT LONG
2. SOCKET HEAD M8×15mm ×2
3. BUTTON HEAD M6×20mm
4. BUTTON HEAD M6×10mm ×2
5. BUTTON HEAD M6×20mm
6. HEEL GUARD [L](HG3)
- ★7. BASE PLATE [L]
8. STEP PLATE [L]
9. FOOT PEG BEARING COLLAR 12.5
10. SHIFT PEDAL 60(SPD1)
11. PEG WASHER M8
12. FOOT PEG
13. MALE ROD END M6
14. ROD END COLLAR 3
15. JAM NUT M6
16. SHIFT ROD 195
17. PEDAL TIP DELRIN
18. FLANGE NUT M8
19. FOOT PEG END CAP

※ADJUST THE STOCK CHANGE ARM WHEN INSTALLING SATO REAR SETS.

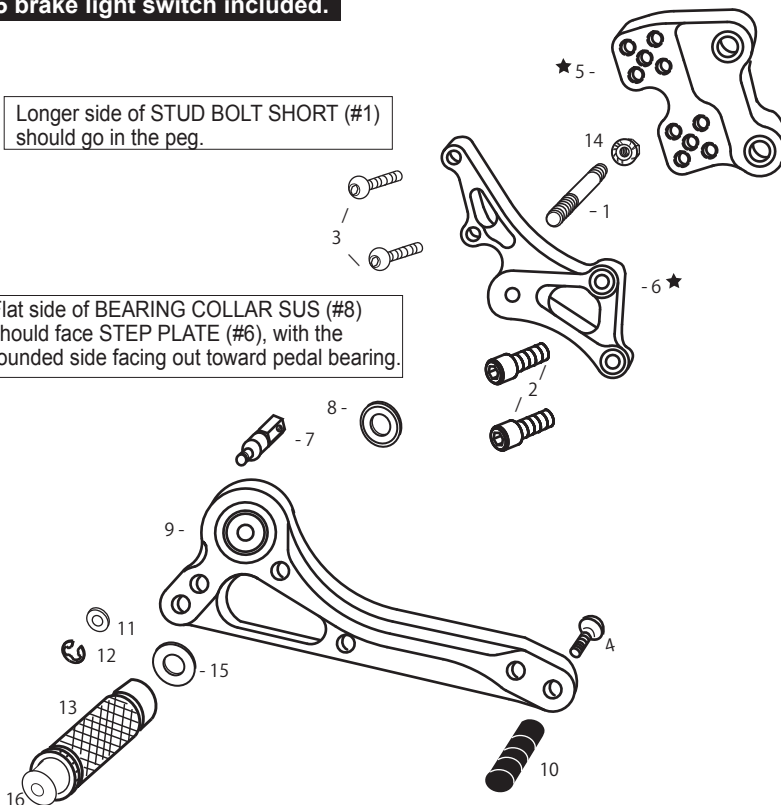
[R]

P-1.25 brake light switch included.

Longer side of STUD BOLT SHORT (#1)
should go in the peg.

Flat side of BEARING COLLAR SUS (#8)
should face STEP PLATE (#6), with the
rounded side facing out toward pedal bearing.

Smooth front of peg washer M8 (#15)
should face pedal bearing, with the
rougher, flat side facing out toward peg.



1. STUD BOLT SHORT
2. SOCKET HEAD M8×15mm ×2
3. BUTTON HEAD M8×25mm ×2
4. BUTTON HEAD M6×20mm
- ★5. BASE PLATE [R]
- ★6. STEP PLATE [R]
7. BRAKE ROD M40
8. BEARING COLLAR SUS
9. BRAKE PEDAL 105(BPD4)
10. PEDAL TIP DELRIN
11. PLAIN WASHER M6
12. E CLIP M6
13. FOOT PEG
14. FLANGE NUT M8
15. PEG WASHER M8
16. FOOT PEG END CAP

Due to running improvements in the designs of Sato parts, some new replacement parts may look somewhat different than the original parts with the same part #. These slight differences are mostly cosmetic and have no effect on performance.

POSITIONS

1	15mm Back	35mm Up
2	15mm Back	20mm Up
3	22.5mm Back	27.5mm Up
4	30mm Back	35mm Up
5	30mm Back	20mm Up

All measurements are in relation to stock position (0 mm)

★ NOTE: This Rear Sets model was discontinued and some parts specific to this model (such as the Base Plates) are no longer available from Sato Racing.