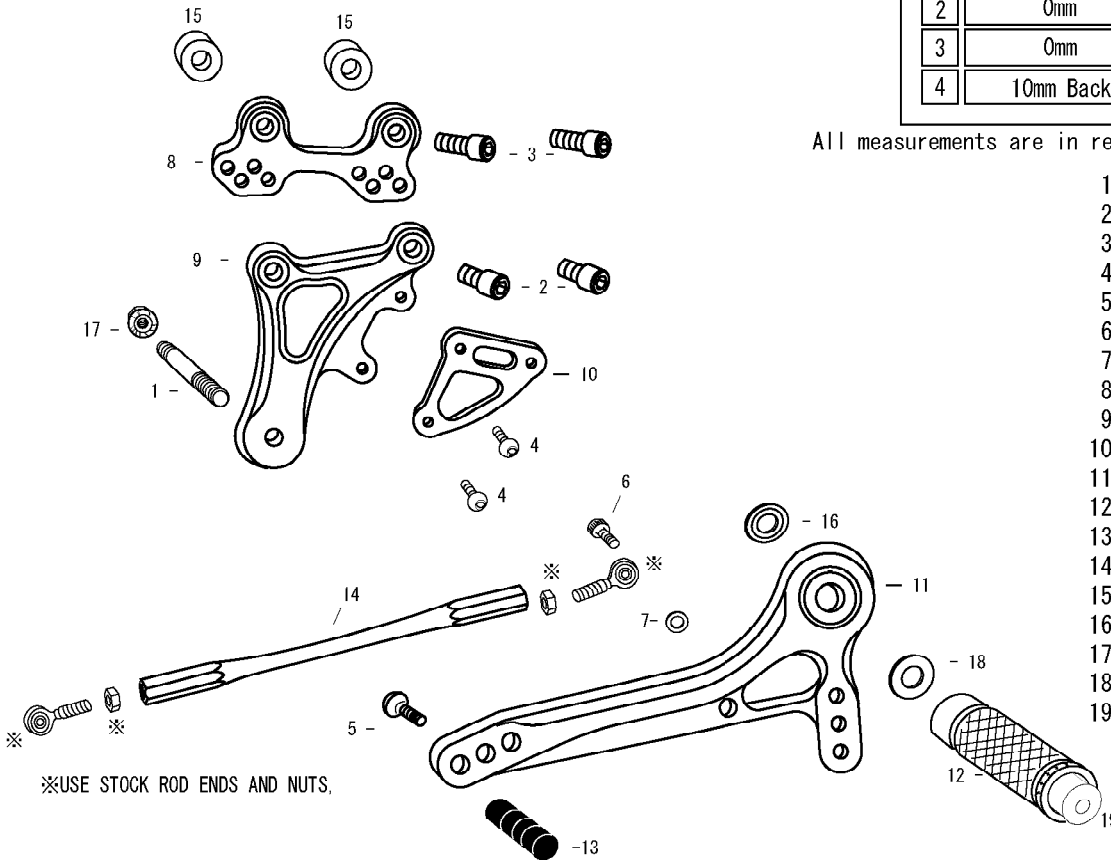


DUCATI Monster900/750/400 (L)

POSITIONS		
1	10mm Forward	20mm Up
2	0mm	20mm Up
3	0mm	30mm Up
4	10mm Back	30mm Up

All measurements are in relation to stock position (0 mm)

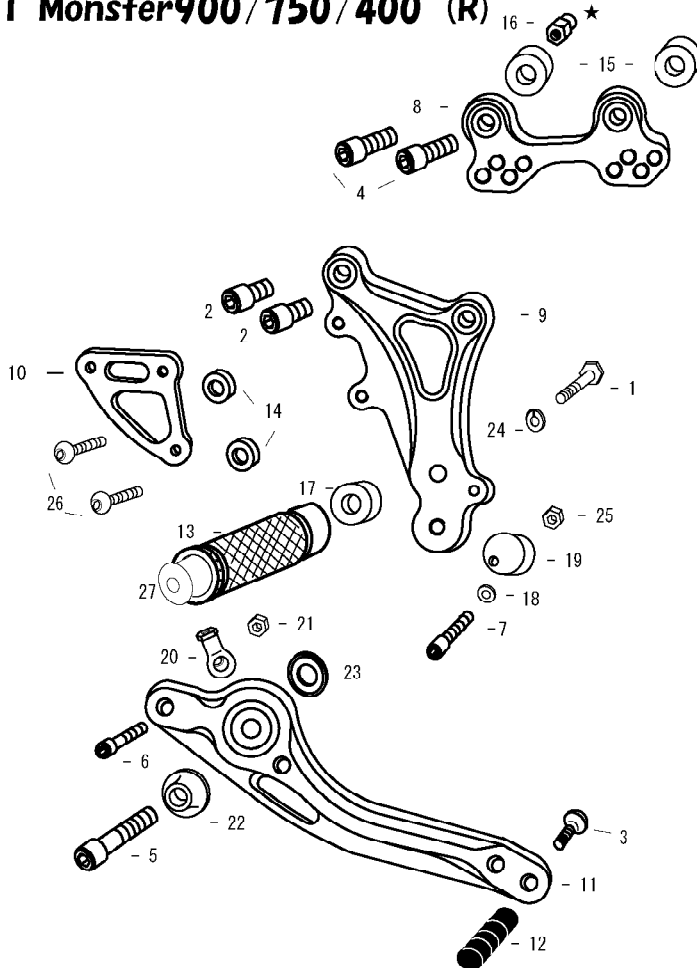


1. STUD BOLT SHORT
2. SOCKET HEAD M8 × 15mm × 2
3. SOCKET HEAD M8 × 30mm × 2
4. BUTTON HEAD M6 × 10mm × 2
5. BUTTON HEAD M6 × 20mm
6. SOCKET HEAD M6 × 20mm
7. ROD END COLLAR 3
8. BASE PLATE [L]
9. STEP PLATE [L]
10. HEEL GUARD [L] (HG11)
11. SHIFT PEDAL 70 (SPD2)
12. FOOT PEG
13. PEDAL TIP DELRIN
14. SHIFT ROD 160
15. BASE PLATE COLLAR 12 × 2
16. BEARING COLLAR SUS
17. FLANGE NUT M8
18. PEG WASHER M8
19. FOOT PEG END CAP

※ADJUST THE STOCK CHANGE ARM WHEN INSTALLING SATO REAR SETS.



DUCATI Monster900/750/400 (R)



★Install #16 with the stock oil tank.

1. HEX BOLT M8 × 45mm
2. SOCKET HEAD M8 × 15mm × 2
3. BUTTON HEAD M6 × 20mm
4. SOCKET HEAD M8 × 30mm × 2
5. SOCKET HEAD M8 × 30mm
6. SOCKET HEAD M6 × 25mm
7. SOCKET HEAD M5 × 25mm
8. BASE PLATE [R]
9. STEP PLATE [R]
10. HEEL GUARD [R] (HG11)
11. BRAKE PEDAL 165 (BPD3)
12. PEDAL TIP DELRIN
13. FOOT PEG
14. HEEL GUARD COLLAR 10 (BK) × 2
15. BASE PLATE COLLAR 12 × 2
16. OIL TANK STAY (BK)
17. FOOT PEG COLLAR 12
18. PLAIN WASHER M5
19. BRAKE PEDAL STOPPER DELRIN
20. FEMALE ROD END M6
21. PLAIN NUT M6
22. BEARING BOLT COVER
23. BEARING COLLAR SUS
24. SPLIT WASHER M8
25. PLAIN NUT M5
26. BUTTON HEAD M6 × 25mm × 2
27. FOOT PEG END CAP