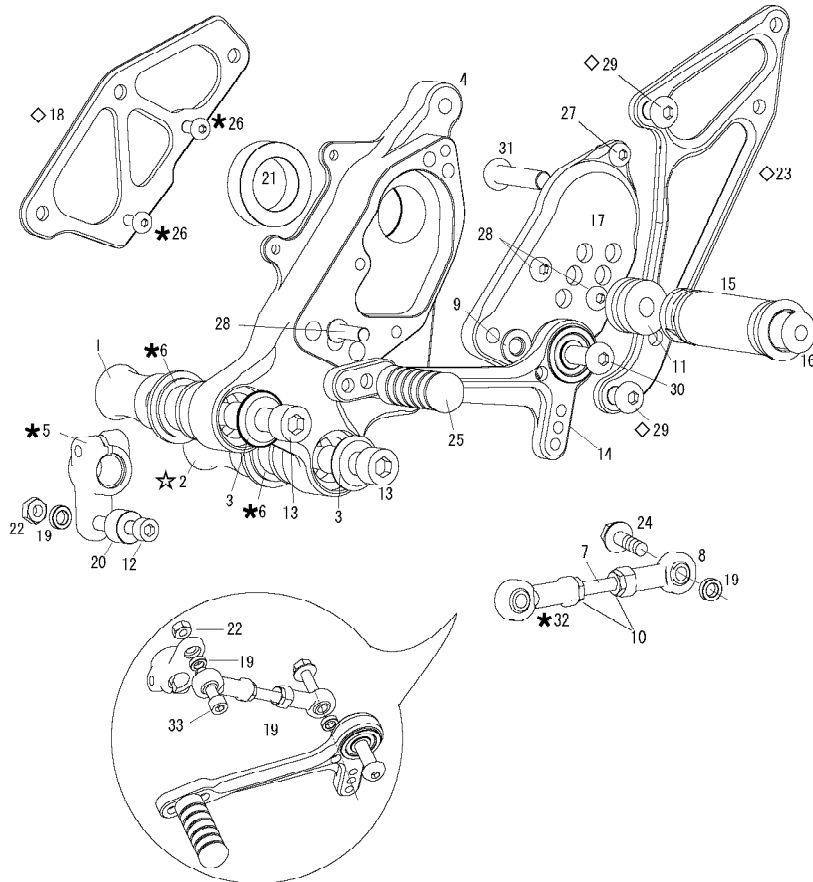


DUCATI Multistrada (L)

★USE STOCK PARTS



REVERSE PATTERN

- 1. COLLAR 10-32 (BK)
- ☆2. COLLAR 10-37 (BK)
- 3. RUBBER CENTER (SUS) × 2
- 4. BASE PLATE [L]
- ★5. CHANGE ARM (STOCK)
- ★6. RUBBER CUSHION (STOCK)
- 7. STUD BOLT M6 × 45mm
- 8. FEMALE ROD END M6
- 9. PEG WASHER M8
- 10. JAM NUT M6 × 2
- 11. FOOT PEG COLLAR 15
- 12. SOCKET HEAD M6 × 35mm
- 13. SOCKET HEAD M10 × 80mm P1.5 × 2
- 14. SHIFT PEDAL (SPD12)
- 15. FOOT PEG
- 16. FOOT PEG END CAP
- 17. STEP PLATE [L]
- ◇18. SPROCKET COVER (OPTION)
- 19. COLLAR 6-3 (GD) × 2
- 20. COLLAR 6-10 (BK)
- 21. COLLAR 25-5.5 (BK)
- 22. PLAIN NUT M6
- ◇23. HEEL GUARD [L] (OPTION)
- 24. FLANGE HEAD M6 × 20mm
- 25. PEDAL TIP DELRIN
- ★26. BUTTON HEAD M5 × 10mm (STOCK)
- 27. BUTTON HEAD M6 × 15mm
- 28. BUTTON HEAD M6 × 20mm × 3
- ◇29. BUTTON HEAD M8 × 10mm (OPTION)
- 30. BUTTON HEAD M8 × 30mm
- 31. BUTTON HEAD M8 × 35mm
- ★32. ROD END (STOCK PARTS)
- 33. SOCKET HEAD M6 × 25mm
- 34. SIDE STAND SPRING COVER 70
- ※ STUD BOLT M6 × 60mm (EXTRA)

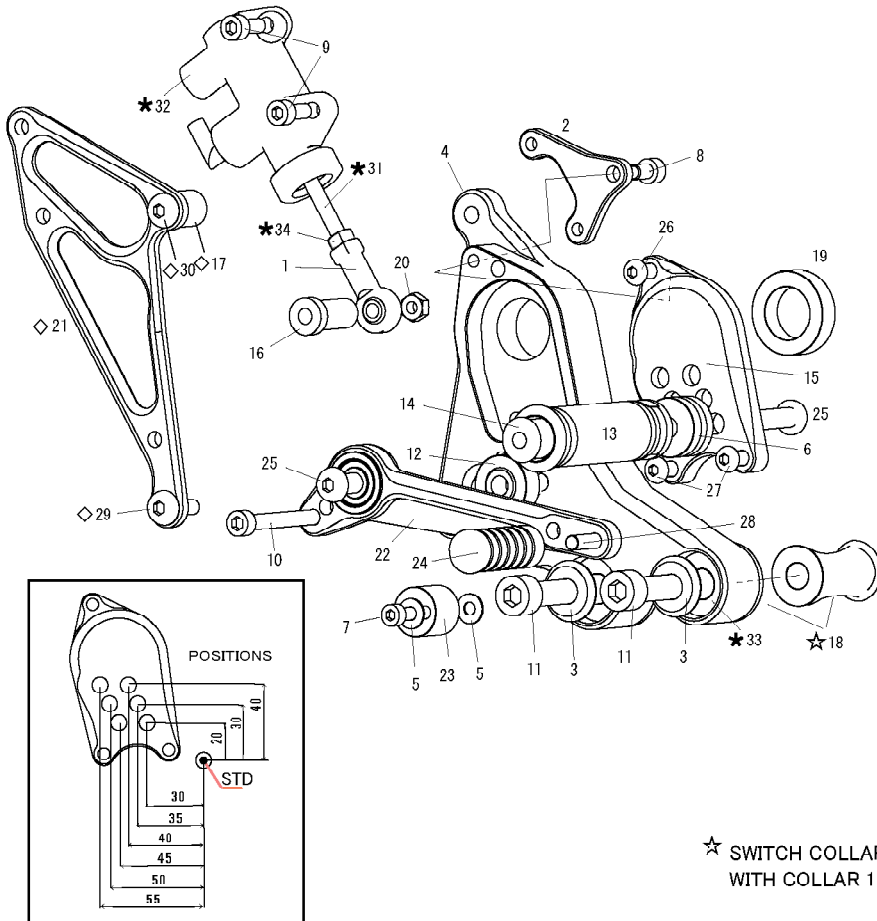
☆ SWITCH COLLAR 10-43 ON THE RIGHT (BRAKE) SIDE (#18) WITH COLLAR 10-37 (#2) FOR HYPERMOTARD.

※USE WHEN IN NEED INSTEAD OF #7 STUD BOLT M6 × 45



DUCATI Multistrada (R)

★USE STOCK PARTS



POSITIONS

- 1. FEMALE ROD END M6
- 2. MASTER BASE (BK)
- 3. RUBBER CENTER (SUS) × 2
- 4. BASE PLATE [R]
- 5. PLAIN WASHER M5 × 2
- 6. FOOT PEG COLLAR 15
- 7. SOCKET HEAD M5 × 30mm
- 8. SOCKET HEAD M6 × 10mm
- 9. SOCKET HEAD M6 × 15mm × 2
- 10. SOCKET HEAD M6 × 55mm
- 11. SOCKET HEAD M10 × 80mm P1.5 × 2
- 12. FOOT PEG BEARING COLLAR 10
- 13. FOOT PEG
- 14. FOOT PEG END CAP
- 15. STEP PLATE [R]
- 16. COLLAR 6-30 (BK)
- ◇17. COLLAR 8-15 (OPTION)
- ☆18. COLLAR 10-43 (BK) × 2
- 19. COLLAR 25-11 (BK)
- 20. PLAIN NUT M6
- ◇21. HEEL GUARD [R] (OPTION)
- 22. BRAKE PEDAL (BPD11)
- 23. BRAKE PEDAL STOPPER DELRIN
- 24. PEDAL TIP DELRIN
- 25. BUTTON HEAD M8 × 35mm × 2
- 26. BUTTON HEAD M6 × 15mm
- 27. BUTTON HEAD M6 × 20mm × 2
- 28. BUTTON HEAD M6 × 20mm
- ◇29. BUTTON HEAD M8 × 10mm (OPTION)
- ◇30. BUTTON HEAD M8 × 25mm (OPTION)
- ★31. PUSH ROD (STOCK)
- ★32. REAR MASTER CYLINDER (STOCK)
- ★33. RUBBER CUSHION (STOCK)
- ★34. PLAIN NUT (STOCK)

☆ SWITCH COLLAR 10-37 ON THE LEFT (SHIFTER) SIDE (#2) WITH COLLAR 10-43 (#18) FOR HYPERMOTARD.