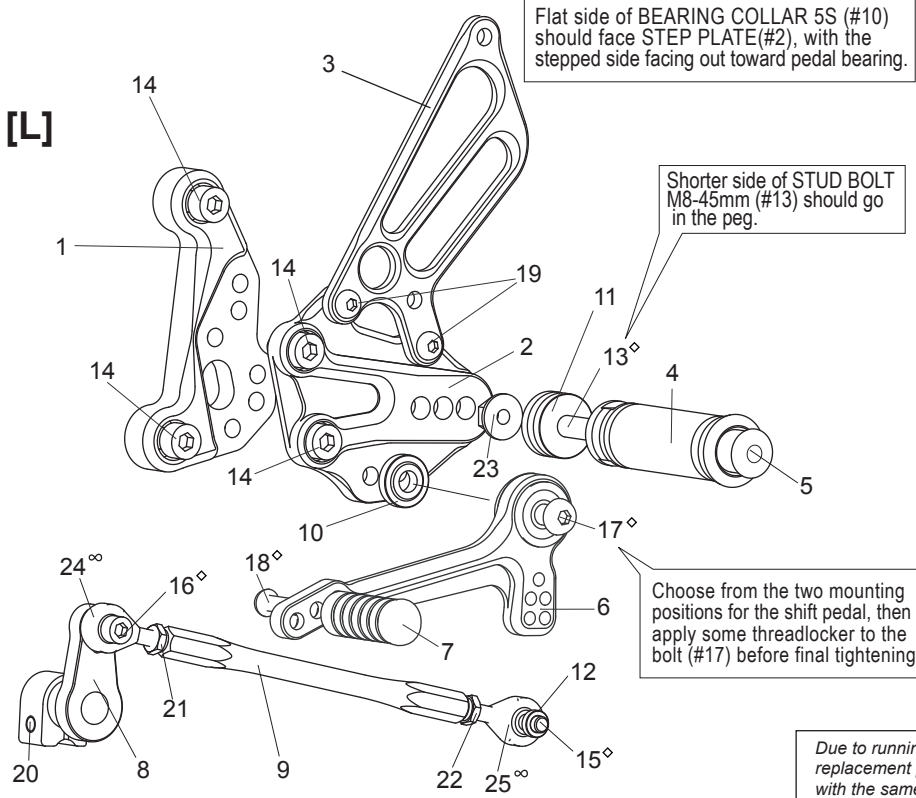


# MV AGUSTA F4 ('10-) REAR SETS

part# MV-F410RS

[L]

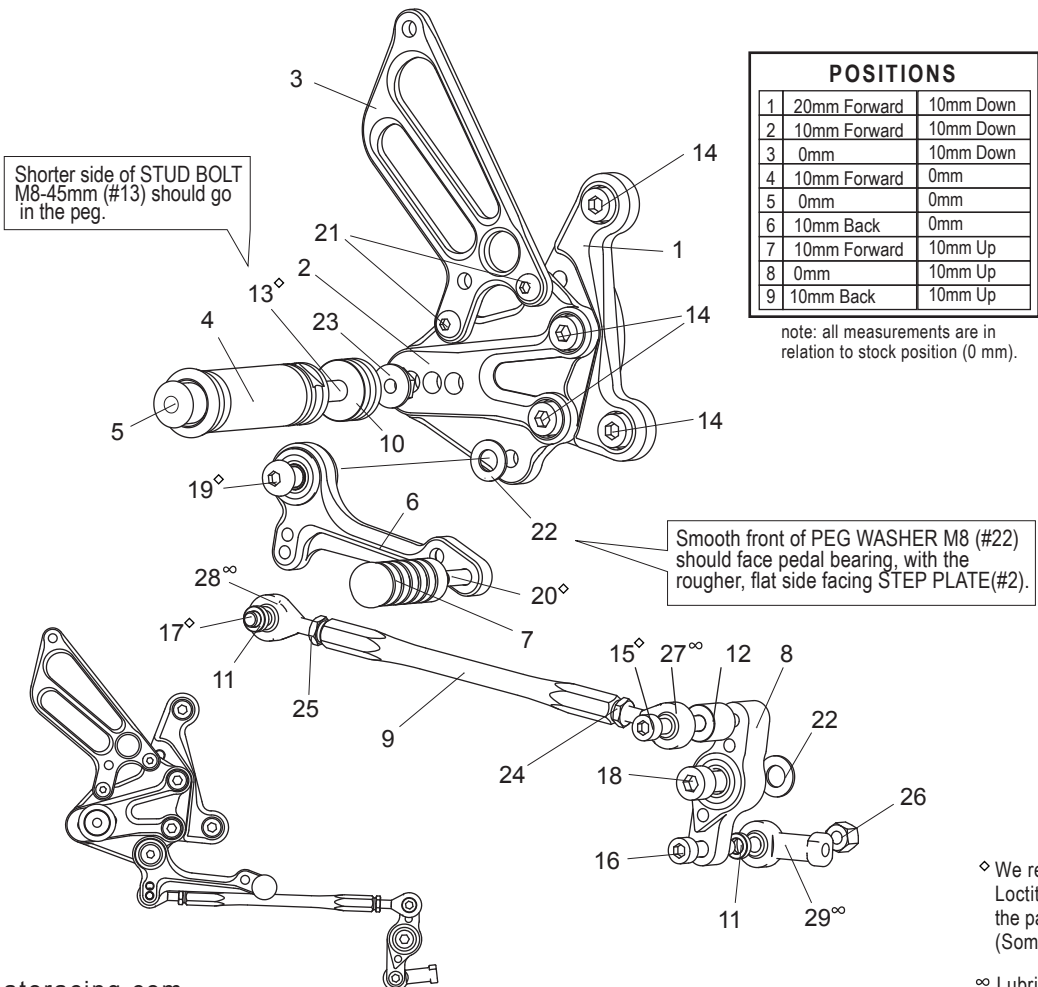


[L] SIDE

1. BASE PLATE [L]
2. STEP PLATE [L]
3. HEEL GUARD [L] [HG-6L]
4. FOOT PEG
5. FOOT PEG END CAP
6. SHIFT PEDAL SCP65-75 [SPD0912]
7. PEDAL TIP [DELRIN]
8. CHANGE ARM S (BK) [CA-3]
9. SHIFT ROD 140
10. BEARING COLLAR 5S(BK)
11. FOOT PEG COLLAR 12
12. ROD END COLLAR 3 (GD)
13. STUD BOLT M8-45mm
14. SOCKET HEAD M8×15mm (x4)
15. SOCKET HEAD M6×20mm
16. SOCKET HEAD M6×15mm
17. BUTTON HEAD M8×30mm
18. BUTTON HEAD M6×20mm
19. BUTTON HEAD M6×10mm (x2)
20. FLANGE HEAD M6×20mm
21. JAM NUT M6
22. REVERSE JAM NUT M6
23. FLANGE NUT M8
24. MALE ROD END M6
25. MALE REVERSE ROD END M6

Due to running improvements in the designs of Sato parts, some new replacement parts may look somewhat different than the original parts with the same part #. These slight differences are mostly cosmetic and have no effect on performance.

[R] (No brake light switch included in kit. Use with stock switch)



[R] SIDE

1. BASE PLATE [R]
2. STEP PLATE [R]
3. HEEL GUARD [R] [HG-6R]
4. FOOT PEG
5. FOOT PEG END CAP
6. BRAKE PEDAL SSBP75 [BPD10]
7. PEDAL TIP [DELRIN] [ST-001D]
8. BRAKE LINK(BK)
9. SHIFT ROD 140
10. FOOT PEG COLLAR 12
11. ROD END COLLAR 3 (GD) (x2)
12. ROD END COLLAR 15(BK)
13. STUD BOLT M8-45mm
14. SOCKET HEAD M8×15mm (x4)
15. SOCKET HEAD M6×35mm
16. SOCKET HEAD M6×30mm
17. SOCKET HEAD M6×20mm
18. SOCKET HEAD M8×30mm
19. BUTTON HEAD M8×25mm
20. BUTTON HEAD M6×20mm
21. BUTTON HEAD M6×10mm (x2)
22. PEG WASHER M8 (x2)
23. FLANGE NUT M8
24. JAM NUT M6
25. REVERSE JAM NUT M6
26. LOCK NUT M6
27. MALE ROD END M6
28. MALE REVERSE ROD END M6
29. FEMALE ROD END M6

◊ We recommend applying some threadlocker (such as Loctite or Vibra Tite) to these bolts. This should help prevent the parts from vibrating their way loose during a ride. (Some pre-assembled parts have already been Loctited)

◊ Lubricate rod ends regularly