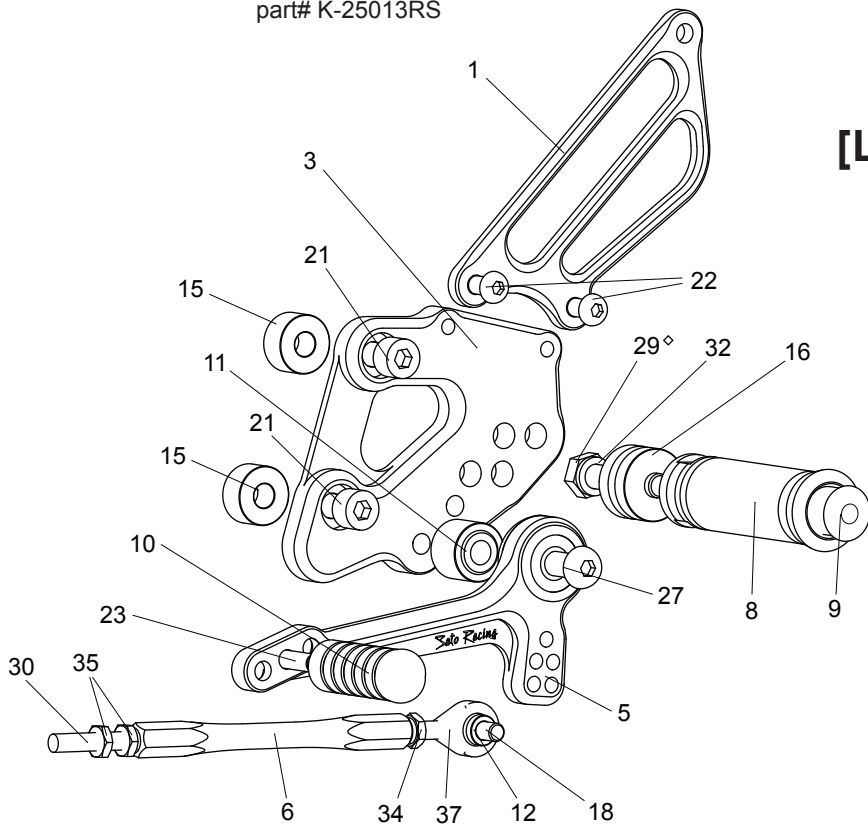


KAWASAKI Ninja 300/ 250 / Z250 ('13-'17) REAR SETS

part# K-25013RS



[L]

1. (L) HEEL GUARD [HG-2L]
3. (L) STEP PLATE [K-25013SP-L]
5. SHIFT PEDAL [SPD-0912]
6. SHIFT ROD 110 [SRD-110]
8. FOOT PEG [PEG]
9. FOOT PEG END CAP [ST-002]
10. PEDAL TIP (DELRIN) [ST-001D18]
11. BEARING COLLAR 15s(BK) [PEGBGCLR-15SB]
12. ROD END COLLAR 3(GD) [RDED-CLR3]
15. BASE PLATE COLLAR 10(BK) [BPCLR-10] x2
16. FOOT PEG COLLAR 15 [PEGCLR-15]
18. SOCKET HEAD M6-20mm [SBT-M620]
21. SOCKET HEAD M8-25mm [SBT-M825] x2
22. BUTTON HEAD M6-10mm [BBT-M610] x2
23. BUTTON HEAD M6-20mm [BBT-M620]
27. BUTTON HEAD M8-40mm [BBT-M840]
29. HEX HEAD M8-40mm [HBT-M840]
30. REVERSE STUD M6-45mm [STUD-M6L]
32. SPLIT WASHER M8 [SWS-8]
34. JAM NUT M6 [JNT-6]
35. REVERSE JAM NUT M6 [JNT-6L] x2
37. MALE ROD END M6 [RDED-M6]

[R] (Use stock brake light switch)

2. (R) HEEL GUARD [HG-2R]
4. (R) STEP PLATE [K-25013SP-R]
7. BRAKE PEDAL [DMBP-135b]
8. FOOT PEG [PEG]
9. FOOT PEG END CAP [ST-002]
10. PEDAL TIP [DELRIN] [ST-001D18]
13. COLLAR 23-6(BK) [CLR-23-6]
14. BASE PLATE COLLAR 5(BK) [BPCLR-5] x2
16. FOOT PEG COLLAR 15 [PEGCLR-15]
17. SOCKET HEAD M5-35mm [SBT-M535]
19. SOCKET HEAD M6-50mm [SBT-M650]
20. SOCKET HEAD M8-20mm [SBT-M820] x2
22. BUTTON HEAD M6-10mm [BBT-M610] x2
23. BUTTON HEAD M6-20mm [BBT-M620]
24. BUTTON HEAD M8-16mm [BBT-M816]
25. BUTTON HEAD M8-20mm [BBT-M820]
26. BUTTON HEAD M8-25mm [BBT-M825]
28. HEX HEAD M5-8mm [HBT-M58]
29. HEX HEAD M8-40mm [HBT-M840]
31. PEG WASHER M8 [PWS-8]
32. SPLIT WASHER M8 [SWS-8]
33. NUT M5 [NUT-5]
36. LOCK NUT M6 [LNT-6]
38. FEMALE ROD END 6-M8 [RDED-F6-8]
39. RETURN SPRING 40 [RS-RSP]
40. PULL SWITCH STAY 16 [PSTAY-16]

* 41. NUT (KAWASAKI PART)

