

# Ninja 650R (ER-6f)/ ER-6n ('09-'11)

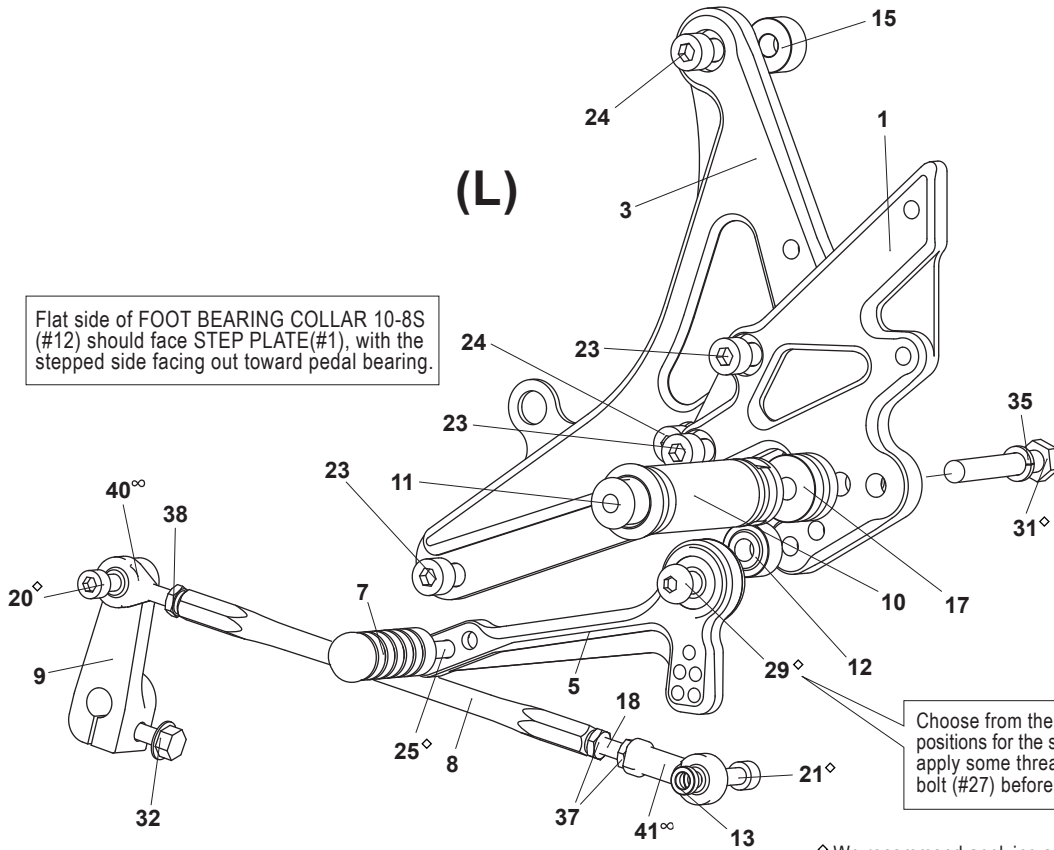
## REAR SETS part# K-650RS

### [L] SIDE

1. STEP PLATE [L]
3. BASE PLATE [L]
5. SHIFT PEDAL SCP65-75 [SPD0912]
7. PEDAL TIP [DELRAIN]
8. SHIFT ROD 180
9. CHANGE ARM SS45(BK)
10. FOOT PEG
11. FOOT PEG END CAP
12. BEARING COLLAR 10-8S(BK)
13. ROD END COLLAR 3
15. BASE PLATE COLLAR 10 (BK) x2
17. FOOT PEG COLLAR 15
18. STUD M6
20. SOCKET HEAD M6-15mm
21. SOCKET HEAD M6-20mm
23. SOCKET HEAD M8-15mm x3
24. SOCKET HEAD M8-30mm x2
25. BUTTON HEAD M6-20mm
29. BUTTON HEAD M8-35mm
31. HEX HEAD M8-40mm
32. FLANGE HEAD M6-20mm
35. SPLIT WASHER M8
37. JAM NUT M6 x2
38. REVERSE JAM NUT M6
40. MALE REVERSE ROD END M6
41. FEMALE ROD END M6

(L)

Flat side of FOOT BEARING COLLAR 10-8S (#12) should face STEP PLATE(#1), with the stepped side facing out toward pedal bearing.



Choose from the two mounting positions for the shift pedal, then apply some threadlocker to the bolt (#27) before final tightening.

**Stock shifting pattern only.**

◇ We recommend applying some threadlocker (such as Loctite or Vibra Tite) to these bolts. This should help prevent the parts from vibrating their way loose during a ride.

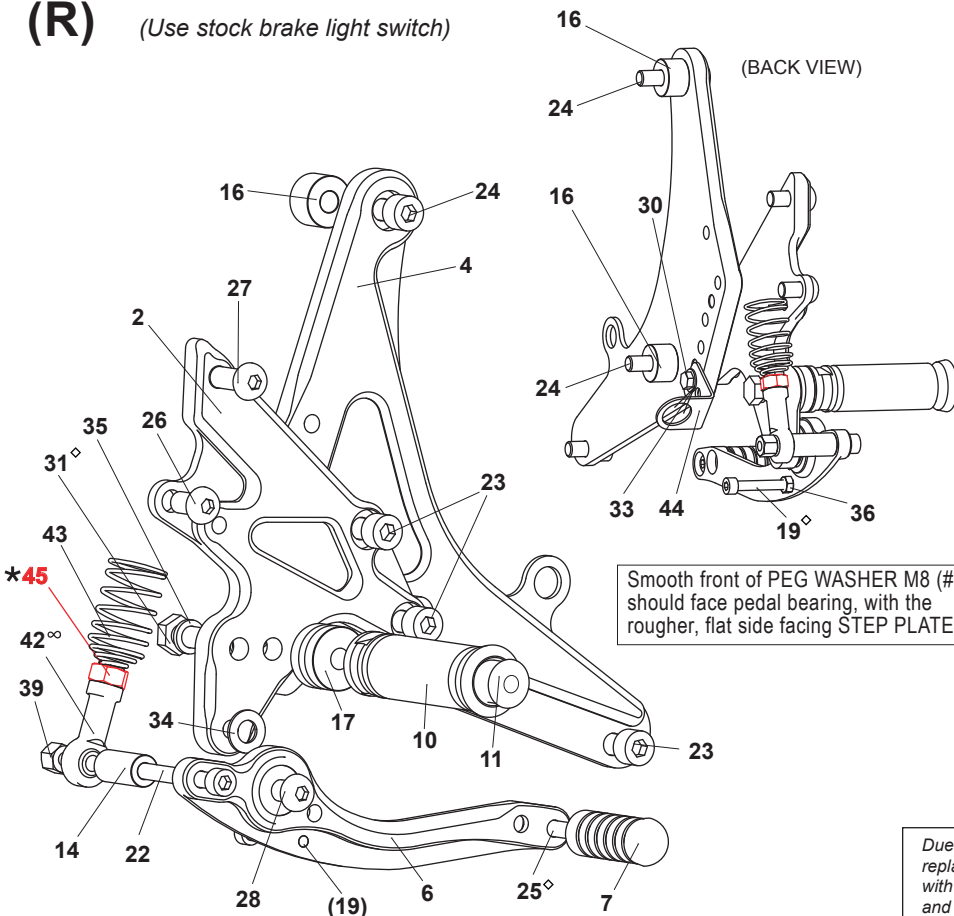
∞ Lubricate rod ends regularly

### (R) (Use stock brake light switch)

### [R] SIDE

2. STEP PLATE [R]
  4. BASE PLATE [R]
  6. BRAKE PEDAL 180b [BPD2]
  7. PEDAL TIP (DELRAIN)
  10. FOOT PEG
  11. FOOT PEG END CAP
  14. ROD END COLLAR 25
  16. BASE PLATE COLLAR 12 (BK) x2
  17. FOOT PEG COLLAR 15
  19. SOCKET HEAD M5-35mm
  22. SOCKET HEAD M6-50mm
  23. SOCKET HEAD M8-15mm x3
  24. SOCKET HEAD M8-30mm x2
  25. BUTTON HEAD M6-20mm
  26. BUTTON HEAD M8-15mm
  27. BUTTON HEAD M8-20mm
  28. BUTTON HEAD M8-25mm
  30. HEX HEAD M5-8mm
  31. HEX HEAD M8-40mm
  33. WASHER M5
  34. PEG WASHER M8
  35. SPLIT WASHER M8
  36. NUT M5
  39. LOCK NUT M6
  42. FEMALE ROD END 6-M8 R
  43. RETURN SPRING 40
  44. PULL SWITCH STAY 16
- \* 45. NUT M8(STOCK)**

(BACK VIEW)



Smooth front of PEG WASHER M8 (#34) should face pedal bearing, with the rougher, flat side facing STEP PLATE(#2).

Due to running improvements in the designs of Sato parts, some new replacement parts may look somewhat different than the original parts with the same part #. These slight differences are mostly cosmetic and have no effect on performance.