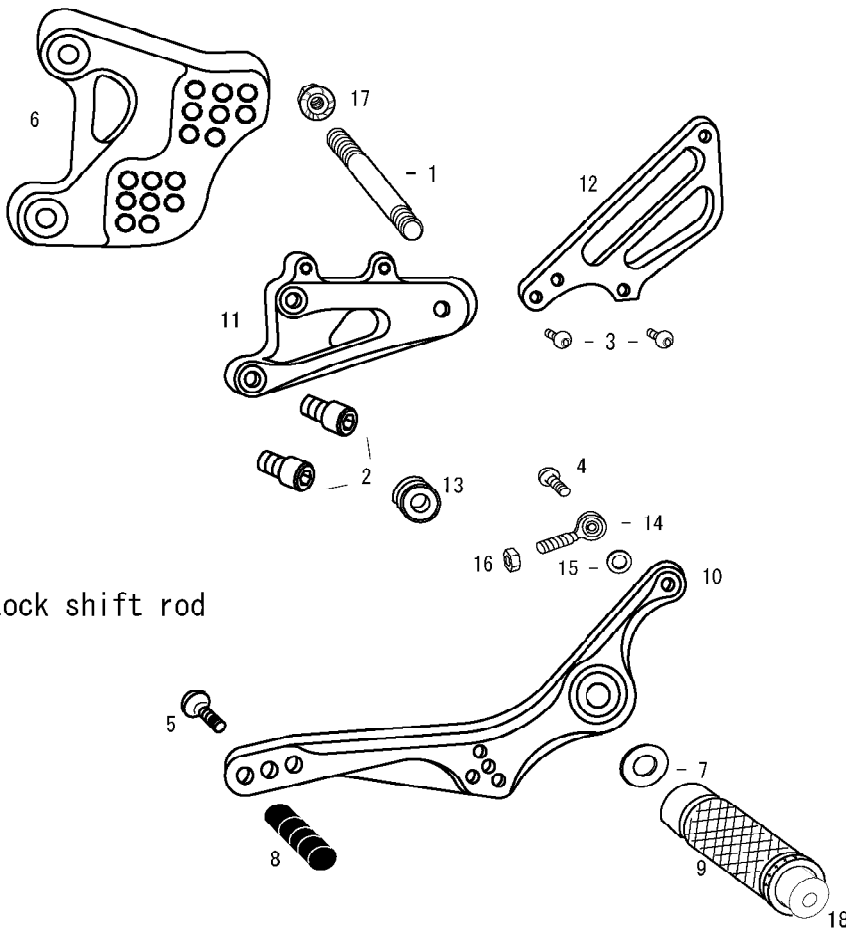


YZF-R1 '02-'03 (L)



1. STUD BOLT LONG
2. SOCKET HEAD M8×15mm ×2
3. BUTTON HEAD M6×10mm ×2
4. BUTTON HEAD M6×20mm
5. BUTTON HEAD M6×20mm
6. BASE PLATE [L]
7. PEG WASHER M8
8. PEDAL TIP DELRIN
9. FOOT PEG
10. SHIFT PEDAL (SPD3)
11. STEP PLATE [L]
12. HEEL GUARD [L] (HG4)
13. FOOT PEG BEARING COLLAR 12.5
14. MALE REVERSE ROD END M6
15. ROD END COLLAR 3
16. REVERSE JAM NUT M6
17. FLANGE NUT M8
18. FOOT PEG END CAP

※use stock shift rod

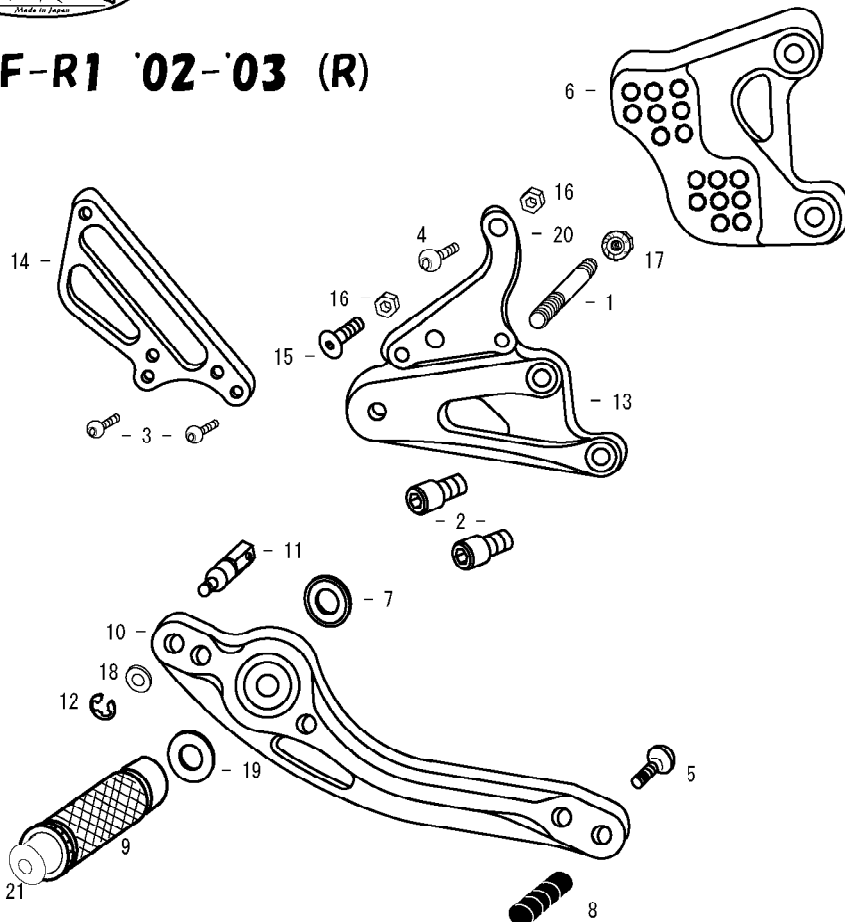
POSITIONS		
1	10mm Forward	10mm Up
2	10mm Forward	20mm Up
3	10mm Forward	30mm Up
4	0mm	10mm Up
5	0mm	20mm Up
6	0mm	30mm Up
7	10mm Back	20mm Up
8	10mm Back	30mm Up

All measurements are in relation to stock position (0 mm)

※ADJUST THE STOCK CHANGE ARM WHEN INSTALLING SATO REAR SETS.



YZF-R1 '02-'03 (R)



1. STUD BOLT SHORT
2. SOCKET HEAD M8×15mm ×2
3. BUTTON HEAD M6×15mm ×2
4. BUTTON HEAD M8×30mm
5. BUTTON HEAD M6×20mm
6. BASE PLATE [R]
7. BEARING COLLAR SUS
8. PEDAL TIP DELRIN
9. FOOT PEG
10. BRAKE PEDAL 180 (BPD2)
11. BRAKE ROD S35
12. E CLIP M6
13. STEP PLATE [R]
14. HEEL GUARD [R] (HG5)
15. FLAT HEAD M8×30mm
16. PLAIN NUT M8 ×2
17. FLANGE NUT M8
18. PLAIN WASHER M6
19. PEG WASHER M8
20. MASTER STAY
21. FOOT PEG END CAP