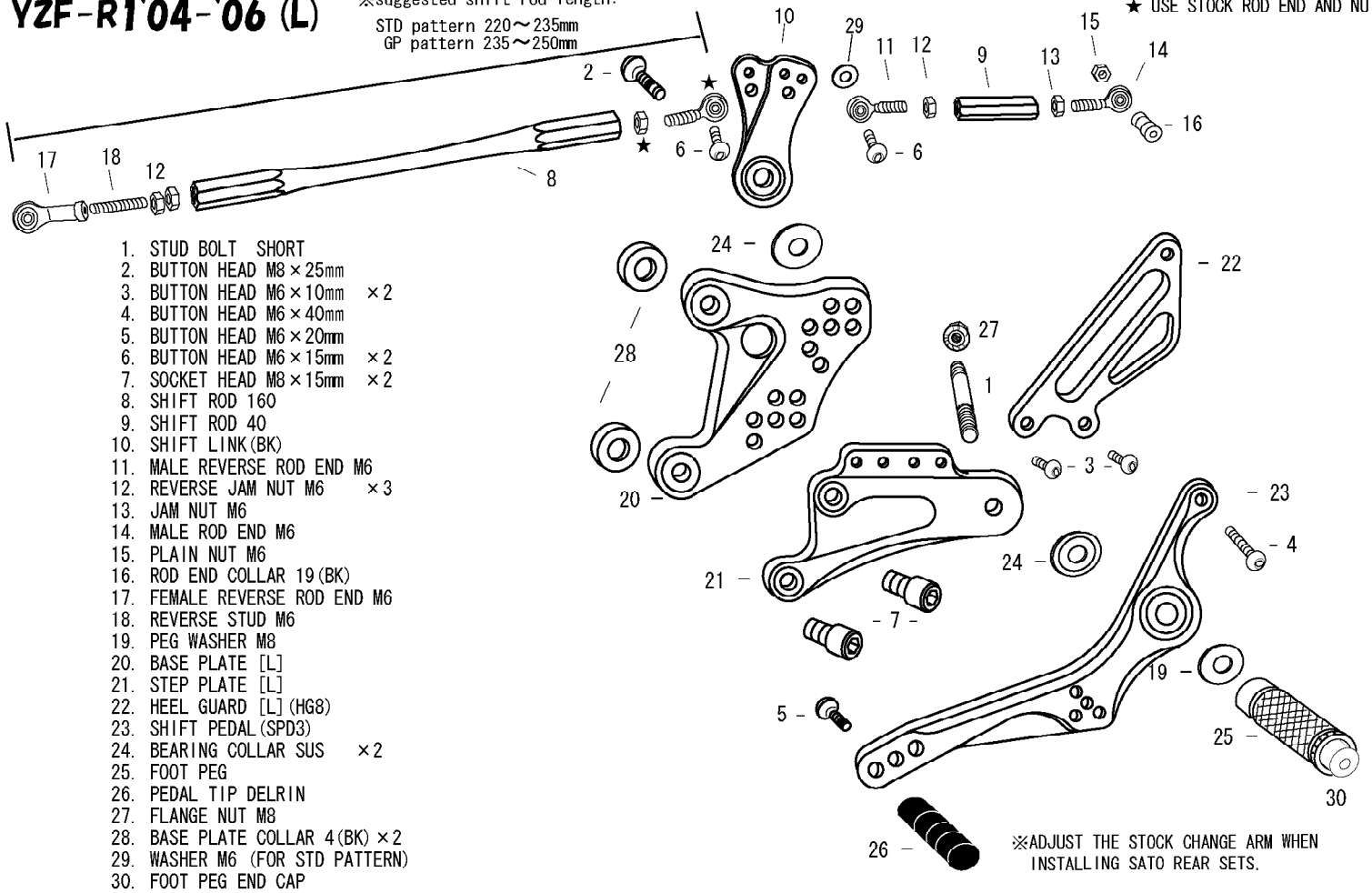


YZF-R1'04-'06 (L)

※suggested shift rod length:

STD pattern 220~235mm
GP pattern 235~250mm

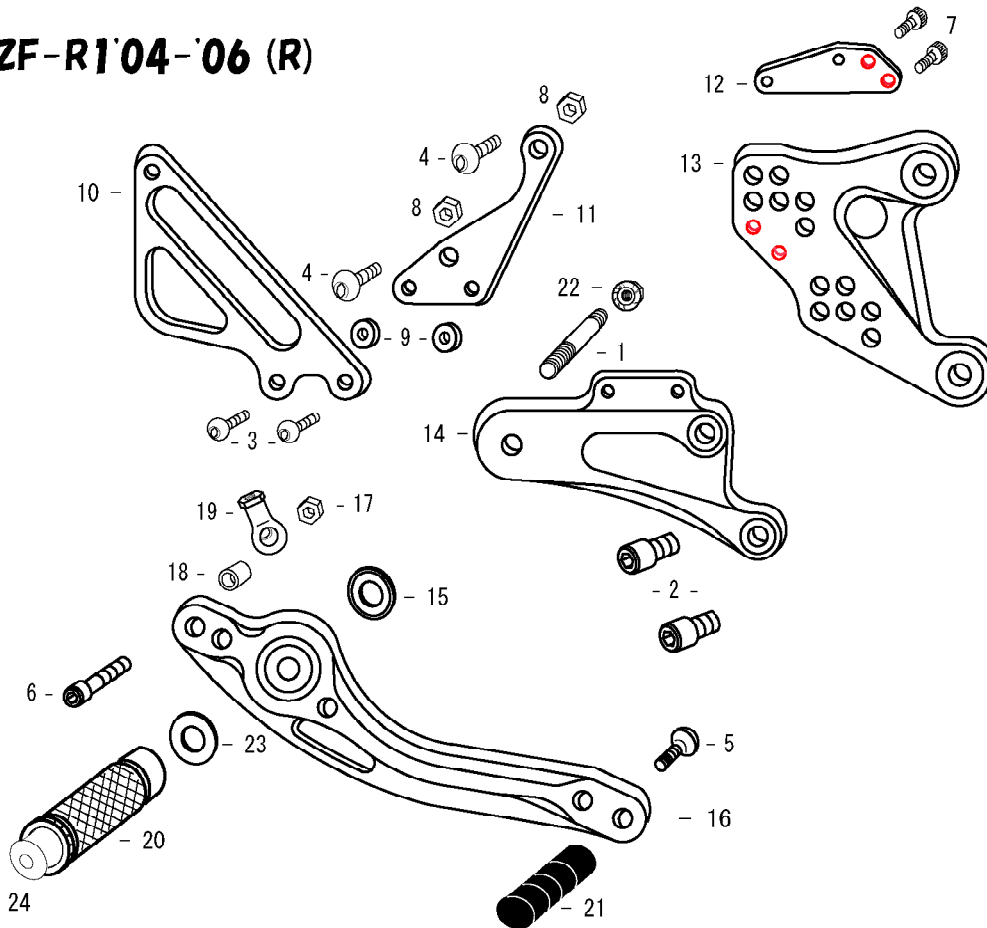
★ USE STOCK ROD END AND NUT.



1. STUD BOLT SHORT
2. BUTTON HEAD M8×25mm
3. BUTTON HEAD M6×10mm ×2
4. BUTTON HEAD M6×40mm
5. BUTTON HEAD M6×20mm
6. BUTTON HEAD M6×15mm ×2
7. SOCKET HEAD M8×15mm ×2
8. SHIFT ROD 160
9. SHIFT ROD 40
10. SHIFT LINK (BK)
11. MALE REVERSE ROD END M6
12. REVERSE JAM NUT M6 ×3
13. JAM NUT M6
14. MALE ROD END M6
15. PLAIN NUT M6
16. ROD END COLLAR 19 (BK)
17. FEMALE REVERSE ROD END M6
18. REVERSE STUD M6
19. PEG WASHER M8
20. BASE PLATE [L]
21. STEP PLATE [L]
22. HEEL GUARD [L] (HG8)
23. SHIFT PEDAL (SPD3)
24. BEARING COLLAR SUS ×2
25. FOOT PEG
26. PEDAL TIP DELRIN
27. FLANGE NUT M8
28. BASE PLATE COLLAR 4 (BK) ×2
29. WASHER M6 (FOR STD PATTERN)
30. FOOT PEG END CAP



YZF-R1'04-'06 (R)



POSITIONS

1	10mm Forward	10mm Up
2	10mm Forward	20mm Up
3	0mm	20mm Up
4	0mm	30mm Up
5	10mm Back	20mm Up
6	10mm Back	30mm Up

All measurements are in relation to stock position (0 mm)

1. STUD BOLT SHORT
2. SOCKET HEAD M8×15mm ×2
3. BUTTON HEAD M6×20mm ×2
4. BUTTON HEAD M8×30mm ×2
5. BUTTON HEAD M6×20mm
6. SOCKET HEAD M6×40mm
7. SOCKET HEAD M6×10mm ×2
8. PLAIN NUT M8 ×2
9. HEEL GUARD COLLAR 5 (BK) ×2
10. HEEL GUARD [R] (HG10)
11. MASTER STAY
12. HEAT GUARD STAY (BK)
13. BASE PLATE [R]
14. STEP PLATE [R]
15. BEARING COLLAR SUS
16. BRAKE PEDAL 180 (BPD2)
17. PLAIN NUT M6
18. BRAKE ROD COLLAR 15 (BK)
19. M6 8 FEMALE ROD END
20. FOOT PEG
21. PEDAL TIP DELRIN
22. FLANGE NUT M8
23. PEG WASHER M8
24. FOOT PEG END CAP