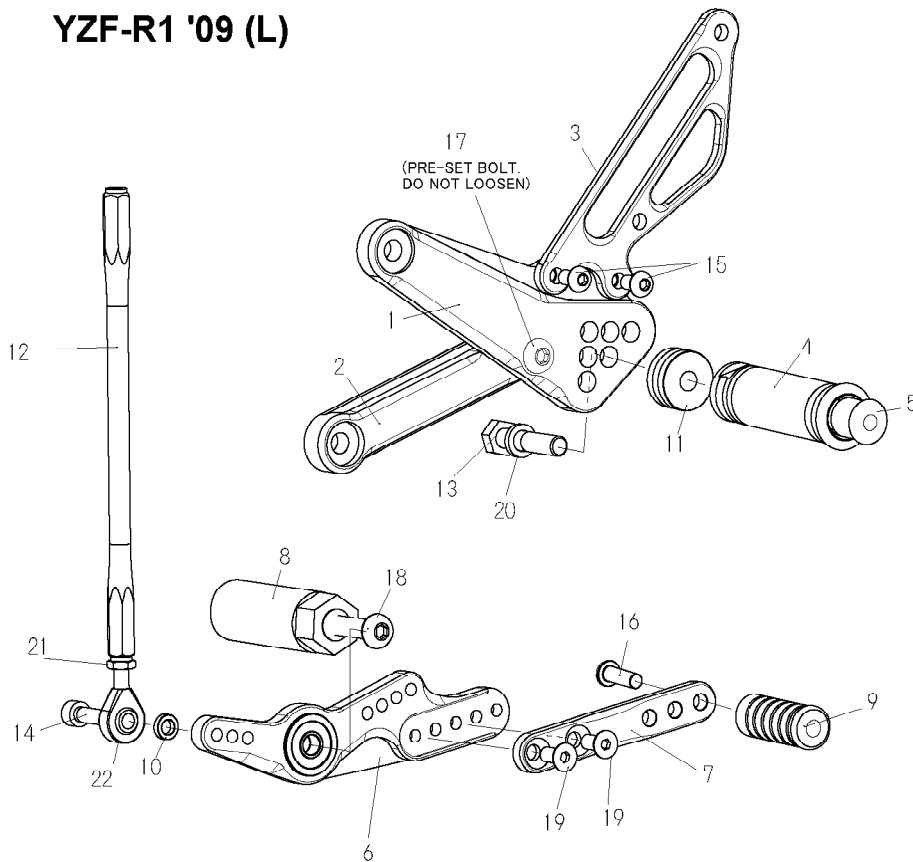


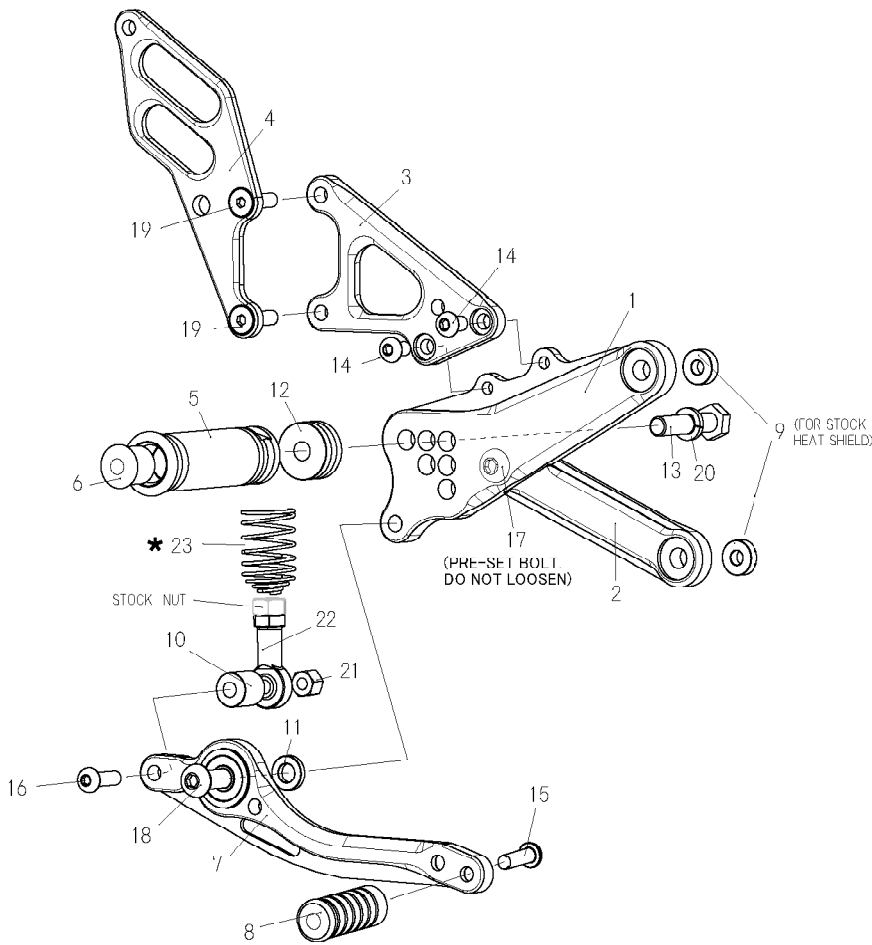
YZF-R1 '09 (L)



1. STEP PLATE [L]
2. STEP BRACKET [L]
3. HEEL GUARD [L] (HG17)
4. FOOT PEG
5. FOOT PEG END CAP
6. SHIFT PEDAL (SPD11, BK)
7. SHIFT PEDAL (SPD8, BK)
8. SHIFT BASE R109
9. PEDAL TIP DELRIN
10. ROD END COLLAR 3
11. FOOT PEG COLLAR 12
12. SHIFT ROD 190 (BK)
13. HEX BOLT M8 × 40mm
14. SOCKET HEAD M6 × 20mm
15. BUTTON HEAD M6 × 10mm × 2
16. BUTTON HEAD M6 × 25mm
17. BUTTON HEAD M8 × 20mm
18. BUTTON HEAD M8 × 30mm
19. FLAT HEAD M6 × 10mm × 2
20. SPLIT WASHER M8
21. REVERSE JAM NUT M6
22. MALE REVERSE ROD END M6



YZF-R1 '09 (R)



1. STEP PLATE [R]
2. STEP BRACKET [R]
3. MASTER STAY
4. HEEL GUARD [R] (HG16)
5. FOOT PEG
6. FOOT PEG END CAP
7. BRAKE PEDAL 165 (BPD3)
8. PEDAL TIP DELRIN
9. HEAT GUARD COLLAR 5 (BK)
10. ROD END COLLAR 15 (BK)
11. BRAKE PEDAL COLLAR 3 (BK)
12. FOOT PEG COLLAR 12
13. HEX BOLT M8 × 40mm
14. BUTTON HEAD M6 × 10mm × 2
15. BUTTON HEAD M6 × 20mm
16. BUTTON HEAD M6 × 40mm
17. BUTTON HEAD M8 × 15mm
18. BUTTON HEAD M8 × 30mm
19. FLAT HEAD M6 × 25mm × 2
20. SPLIT WASHER M8
21. LOCK NUT M6
22. 6-M8 FEMALE ROD END
- *23. RETURN SPRING 40 (OPTION)

POSITIONS	
① Forward10mm	Down10mm
② Forward10mm	0mm
③ Forward10mm	10mmUP
④ 0mm	0mm
⑤ 0mm	10mmUP
⑥ 10mmBACK	10mmUP