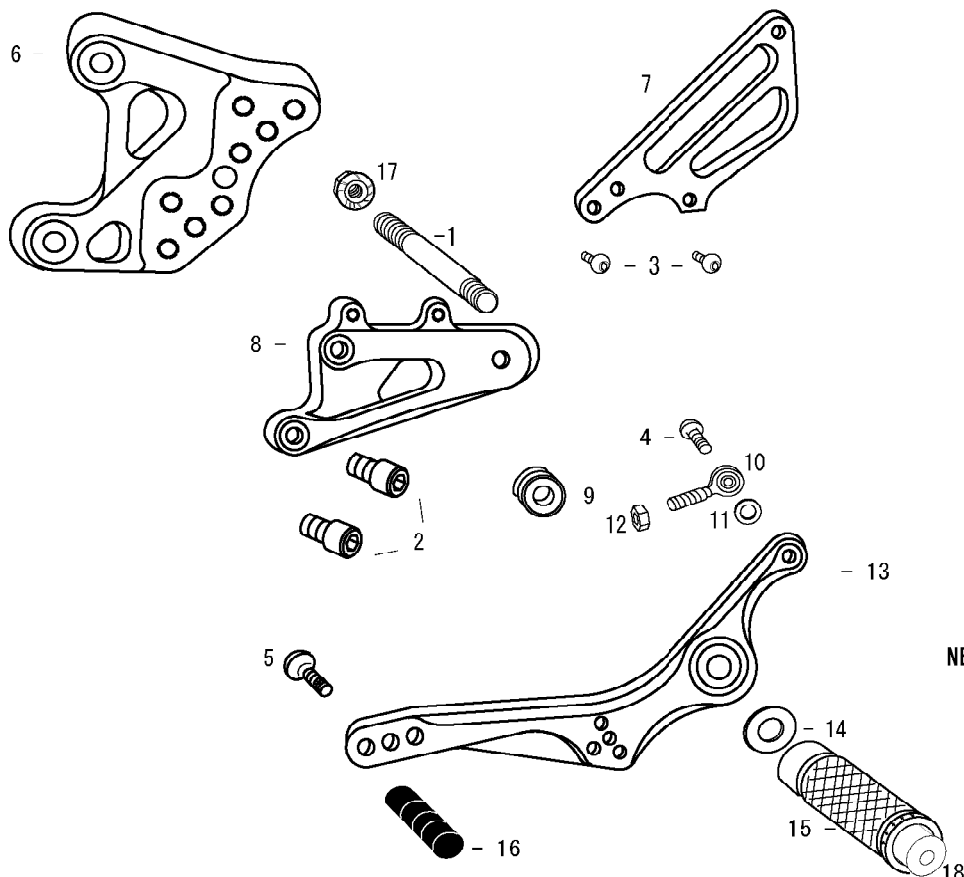


# YZF-R1 '98-'01 (L)



1. STUD BOLT LONG
2. SOCKET HEAD M8×15mm ×2
3. BUTTON HEAD M6×10mm ×2
4. BUTTON HEAD M6×20mm
5. BUTTON HEAD M6×20mm
6. BASE PLATE [L]
7. HEEL GUARD [L] (HG4)
8. STEP PLATE [L]
9. FOOT PEG BEARING COLLAR 12.5
10. MALE REVERSE ROD END M6
11. ROD END COLLAR 3
12. REVERSE JAM NUT M6
13. SHIFT PEDAL (SPD3)
14. PEG WASHER M8
15. FOOT PEG
16. PEDAL TIP DELRIN
17. FLANGE NUT M8
18. FOOT PEG END CAP

※use stock shift rod

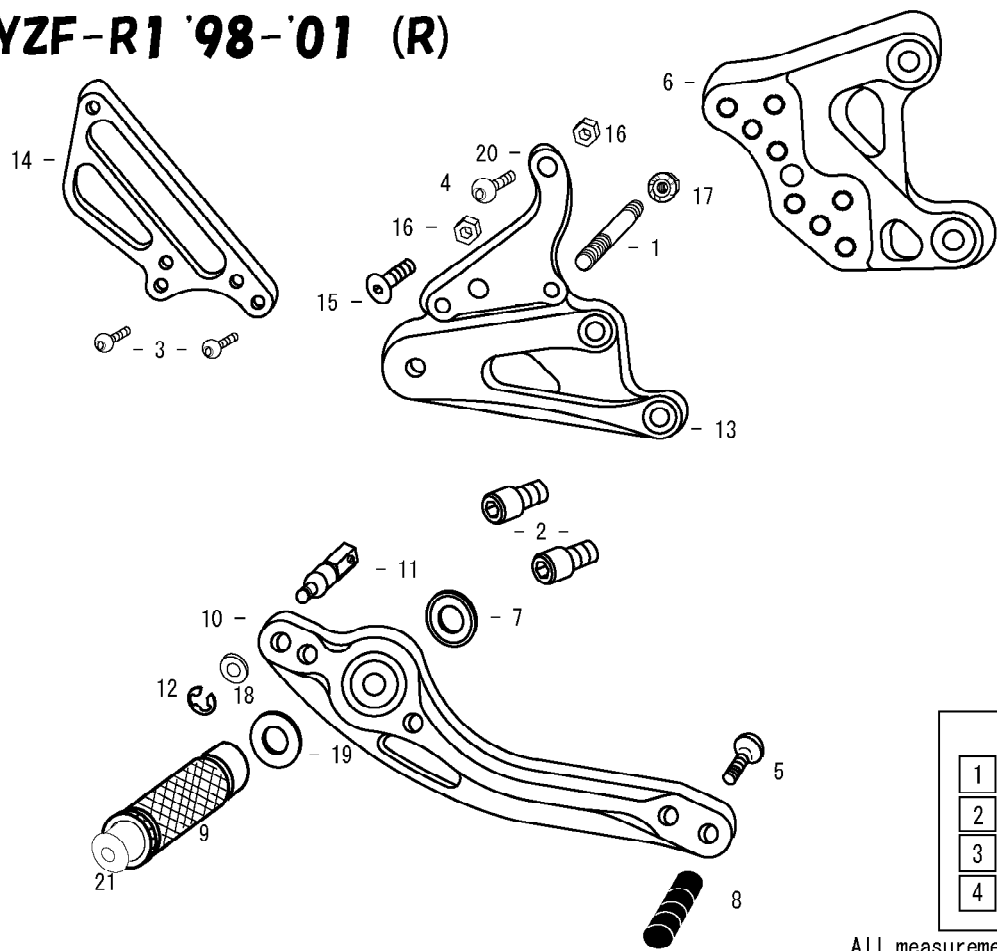
NEED THE FOLLOWING PARTS FOR '98 MODEL  
(FOR STOCK CHANGE ARM)

- COLLAR 30mm ×1  
SOCKET HEAD M6×45 ×1

※ADJUST THE STOCK CHANGE ARM WHEN INSTALLING SATO REAR SETS.



# YZF-R1 '98-'01 (R)



1. STUD BOLT SHORT
2. SOCKET HEAD M8×15mm ×2
3. BUTTON HEAD M6×15mm ×2
4. BUTTON HEAD M8×30mm
5. BUTTON HEAD M6×20mm
6. BASE PLATE [R]
7. BEARING COLLAR SUS
8. PEDAL TIP DELRIN
9. FOOT PEG
10. BRAKE PEDAL 180 (BPD2)
11. BRAKE ROD S35
12. E CLIP M6
13. STEP PLATE [R]
14. HEEL GUARD [R] (HG5)
15. FLAT HEAD M8×30mm
16. PLAIN NUT M8 ×2
17. FLANGE NUT M8
18. PLAIN WASHER M6
19. PEG WASHER M8
20. MASTER STAY
21. FOOT PEG END CAP

POSITIONS		
1	0mm	20mm Up
2	10mm Back	10mm Up
3	20mm Back	20mm Up
4	0mm	0mm

All measurements are in relation to stock position (0 mm)