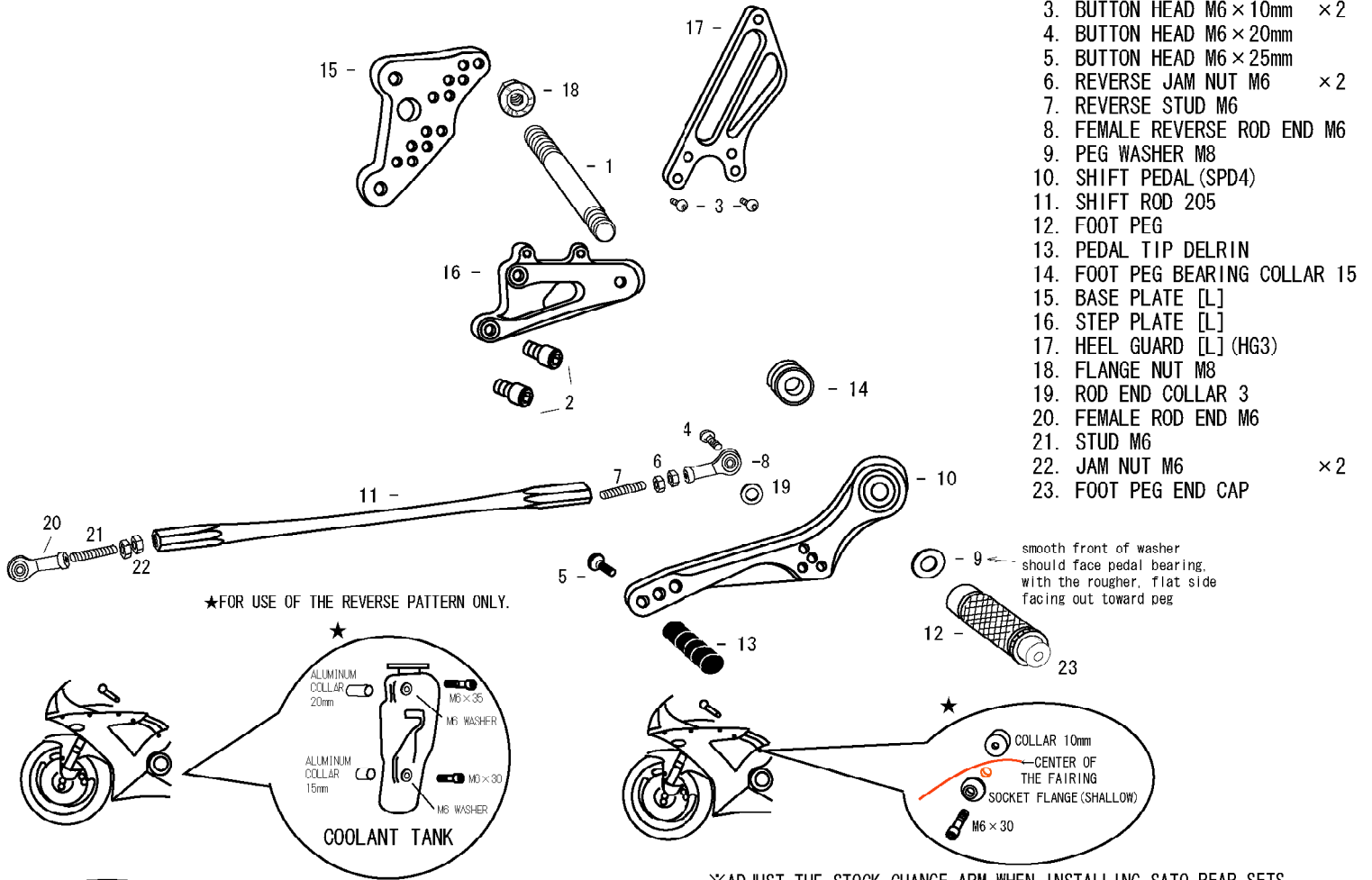


YZF-R6 '03-'05 (L)

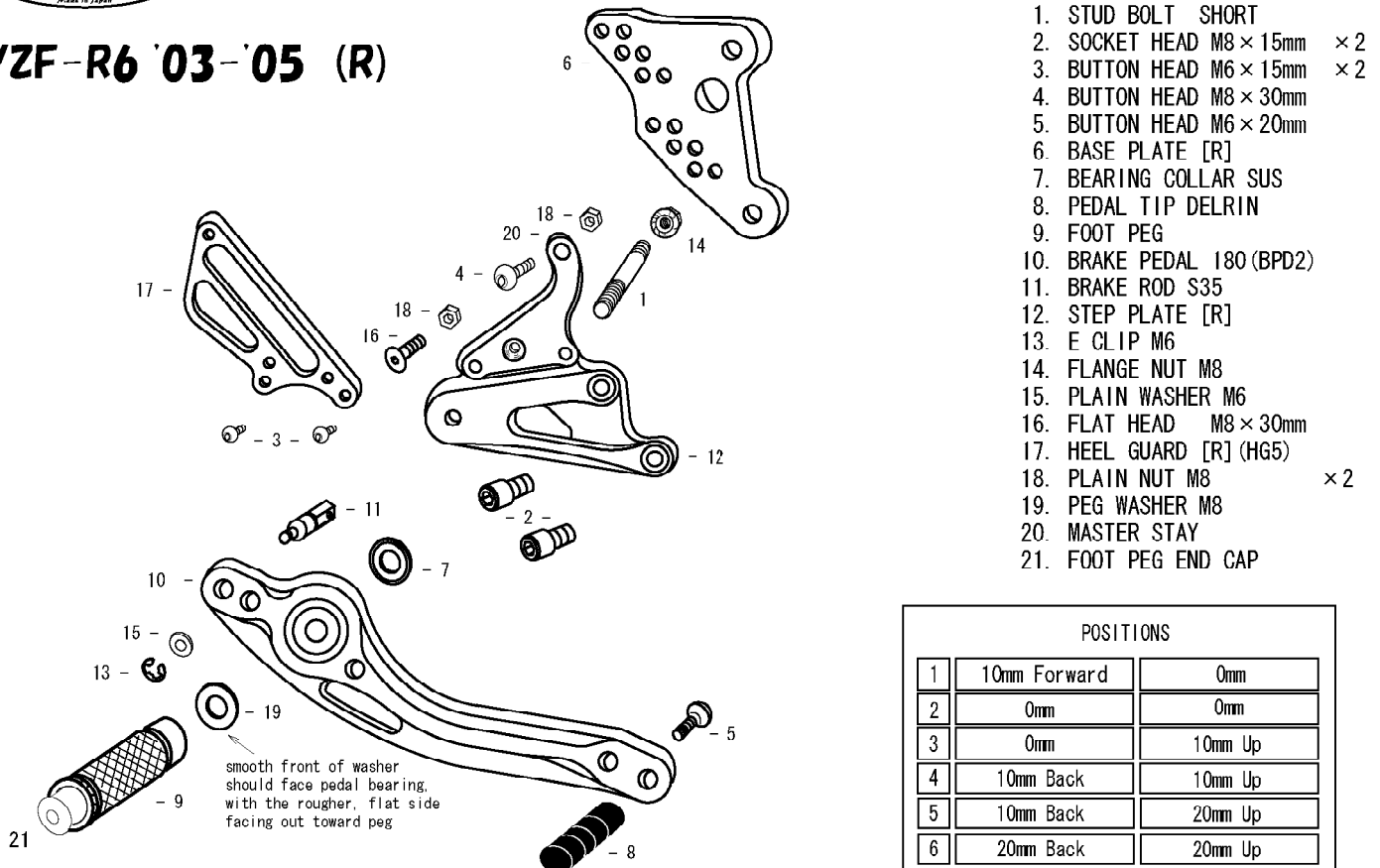


1. STUD BOLT LONG
2. SOCKET HEAD M8 × 15mm × 2
3. BUTTON HEAD M6 × 10mm × 2
4. BUTTON HEAD M6 × 20mm
5. BUTTON HEAD M6 × 25mm
6. REVERSE JAM NUT M6 × 2
7. REVERSE STUD M6
8. FEMALE REVERSE ROD END M6
9. PEG WASHER M8
10. SHIFT PEDAL (SPD4)
11. SHIFT ROD 205
12. FOOT PEG
13. PEDAL TIP DELRIN
14. FOOT PEG BEARING COLLAR 15
15. BASE PLATE [L]
16. STEP PLATE [L]
17. HEEL GUARD [L] (HG3)
18. FLANGE NUT M8
19. ROD END COLLAR 3
20. FEMALE ROD END M6
21. STUD M6
22. JAM NUT M6 × 2
23. FOOT PEG END CAP



※ADJUST THE STOCK CHANGE ARM WHEN INSTALLING SATO REAR SETS.

YZF-R6 '03-'05 (R)



1. STUD BOLT SHORT
2. SOCKET HEAD M8 × 15mm × 2
3. BUTTON HEAD M6 × 15mm × 2
4. BUTTON HEAD M8 × 30mm
5. BUTTON HEAD M6 × 20mm
6. BASE PLATE [R]
7. BEARING COLLAR SUS
8. PEDAL TIP DELRIN
9. FOOT PEG
10. BRAKE PEDAL 180 (BPD2)
11. BRAKE ROD S35
12. STEP PLATE [R]
13. E CLIP M6
14. FLANGE NUT M8
15. PLAIN WASHER M6
16. FLAT HEAD M8 × 30mm
17. HEEL GUARD [R] (HG5)
18. PLAIN NUT M8 × 2
19. PEG WASHER M8
20. MASTER STAY
21. FOOT PEG END CAP

POSITIONS		
1	10mm Forward	0mm
2	0mm	0mm
3	0mm	10mm Up
4	10mm Back	10mm Up
5	10mm Back	20mm Up
6	20mm Back	20mm Up

All measurements are in relation to stock position (0 mm)