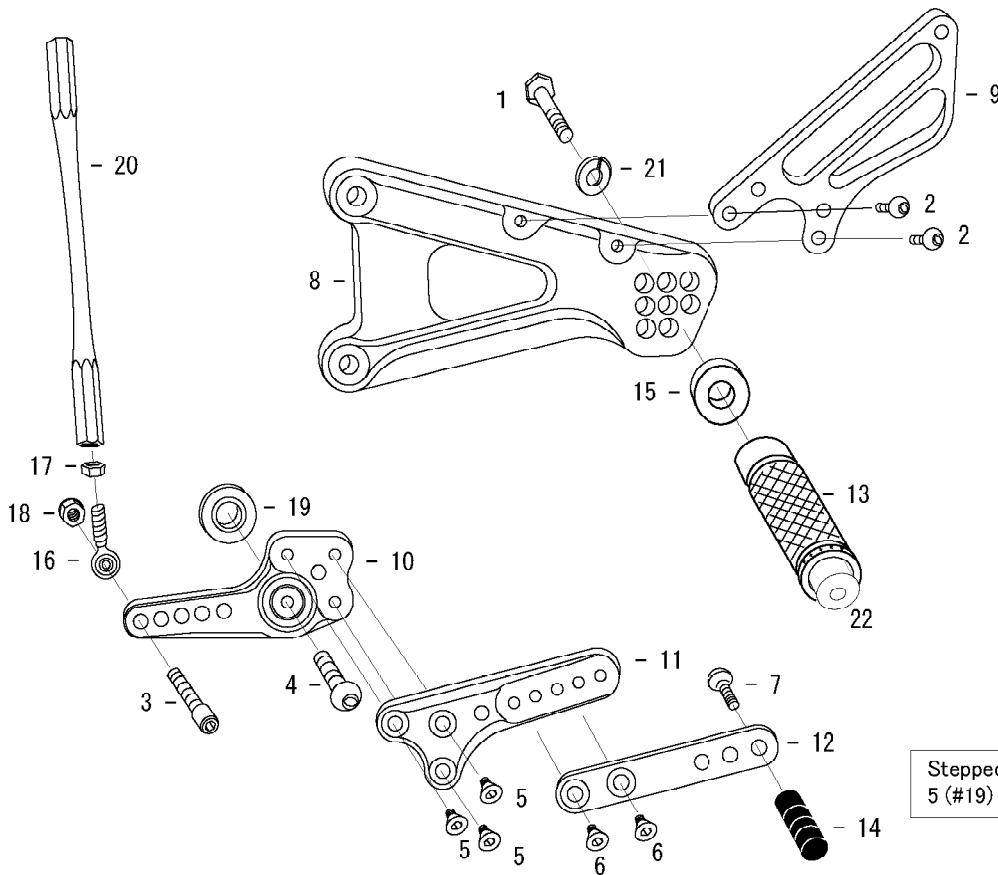


# YZF-R6 '06- (L)



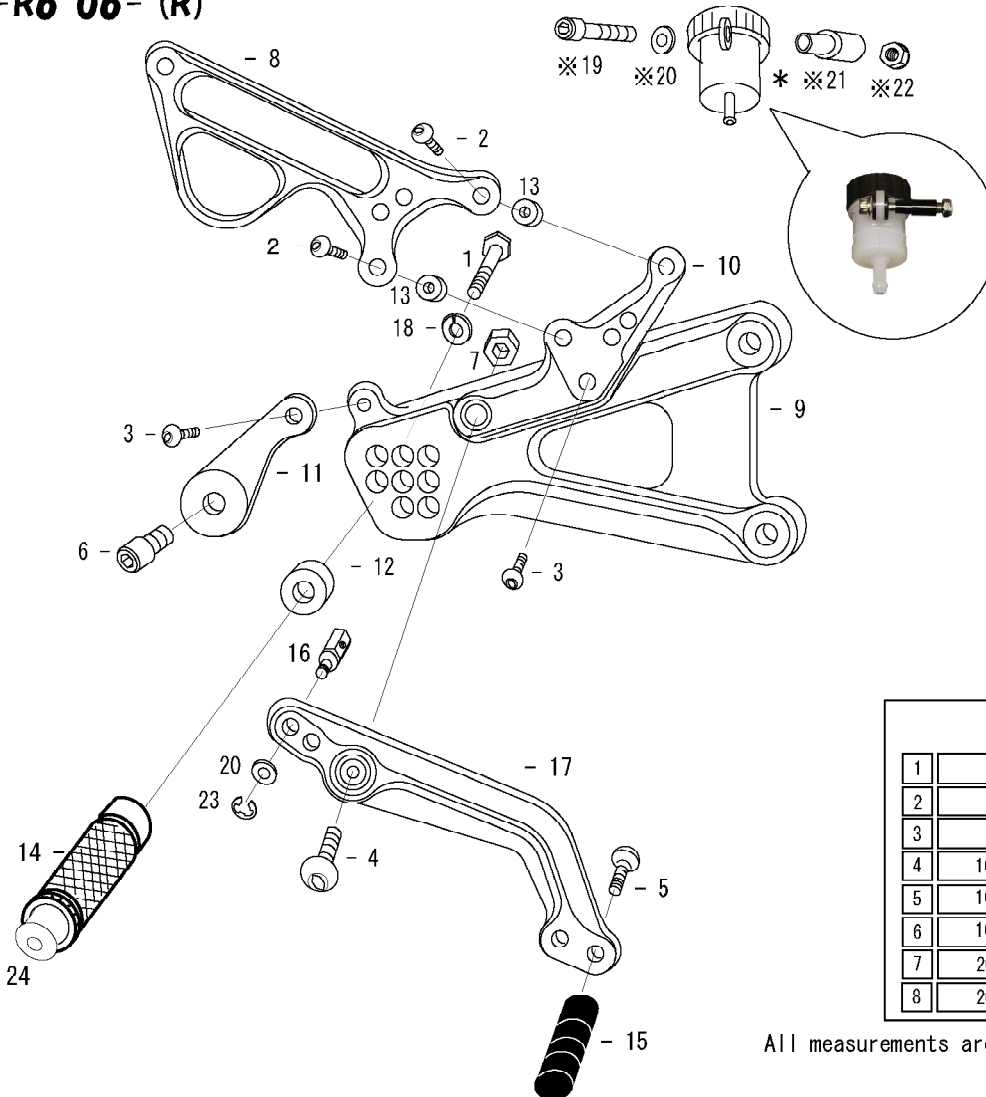
1. HEX HEAD M8 × 45mm
2. BUTTON HEAD M6 × 10mm × 2
3. SOCKET HEAD M6 × 25mm
4. BUTTON HEAD M8 × 35mm
5. FLAT HEAD M6 × 15mm × 3
6. FLAT HEAD M6 × 10mm × 2
7. BUTTON HEAD M6 × 25mm
8. BASE PLATE [L]
9. HEEL GUARD [L] (HG3)
10. SHIFT BASE #1 (BK)
11. SHIFT BASE #2 (BK)
12. SHIFT PEDAL (SPD8) (BK)
13. FOOT PEG
14. PEDAL TIP DELRIN
15. FOOT PEG COLLAR 12
16. REVERSE MALE ROD END M6
17. REVERSE JAM NUT M6
18. LOCK NUT M6
19. FOOT PEG BEARING COLLAR 5 (BK)
20. SPLIT WASHER 210
21. SPLIT WASHER M8
22. FOOT PEG END CAP

Stepped side of foot peg bearing collar 5 (#19) should face shift base bearing(#10).



# YZF-R6 '06- (R)

\*STOCK BRAKE MASTER TANK



1. HEX HEAD M8 × 45mm
2. BUTTON HEAD M6 × 25mm × 2
3. BUTTON HEAD M6 × 10mm × 2
4. BUTTON HEAD M8 × 30mm
5. BUTTON HEAD M6 × 25mm
6. SOCKET HEAD M8 × 20mm
7. PLAIN NUT M8
8. HEEL GUARD [R] (HG12)
9. BASE PLATE [R]
10. MASTER STAY
11. CANISTER STAY (BK)
12. FOOT PEG COLLAR 12
13. MASTER STAY COLLAR 5 (BK)
14. FOOT PEG
15. PEDAL TIP DELRIN
16. BRAKE ROD SS
17. BRAKE PEDAL (BPD8)
18. SPLIT WASHER M8
19. SOCKET HEAD M6 × 50mm※
20. PLAIN WASHER M6※
21. COLLAR 25 (SV)※
22. LOCK NUT M6※
23. E CLIP M6
24. FOOT PEG END CAP

(※FOR '06-'07 MODEL ONLY)

POSITIONS		
1	0mm	10mm Up
2	0mm	20mm Up
3	0mm	30mm Up
4	10mm Back	10mm Up
5	10mm Back	20mm Up
6	10mm Back	30mm Up
7	20mm Back	20mm Up
8	20mm Back	30mm Up

All measurements are in relation to stock position (0 mm)