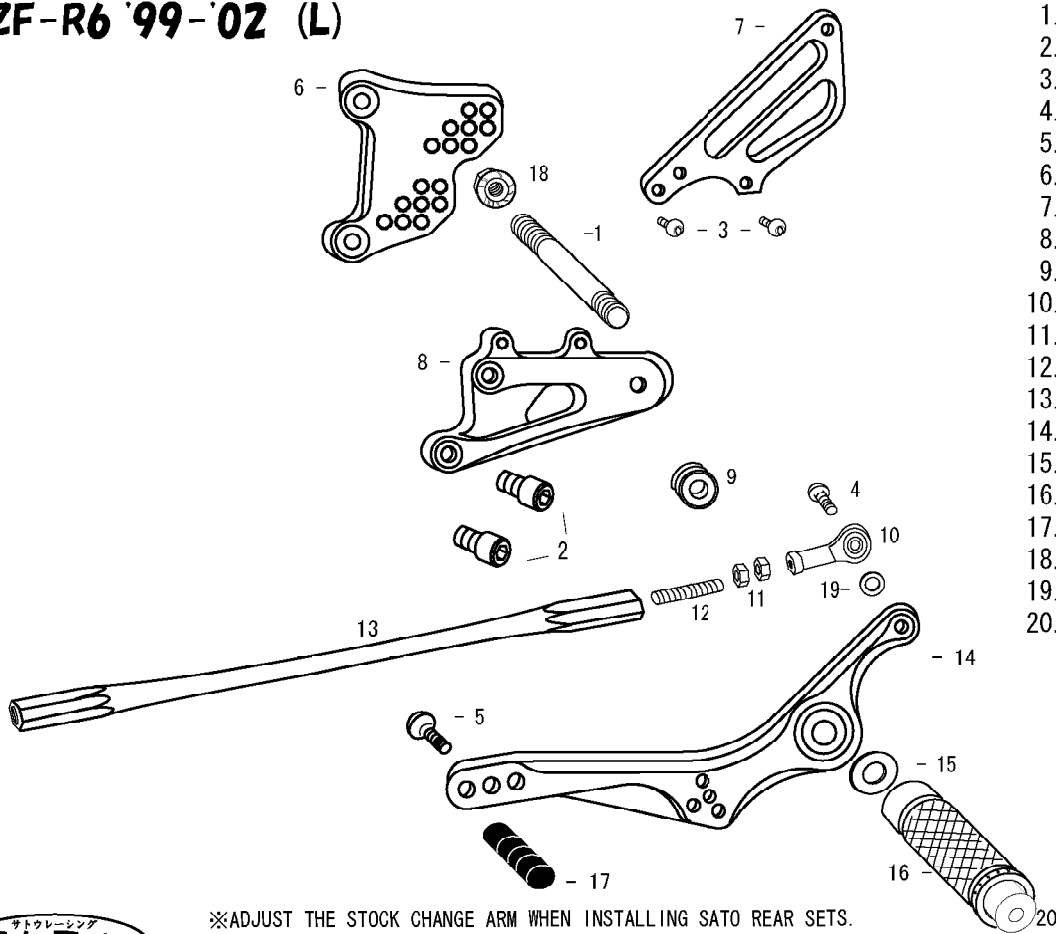


# YZF-R6 '99-'02 (L)

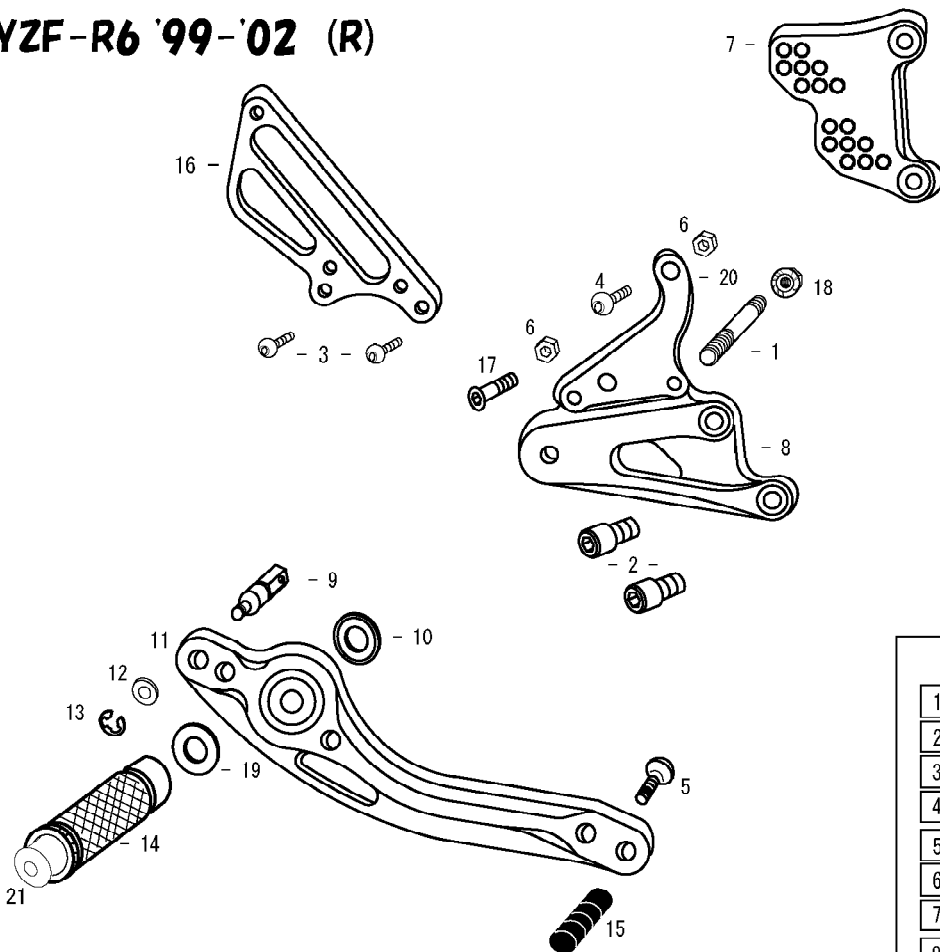


1. STUD BOLT LONG
2. SOCKET HEAD M8 × 15mm × 2
3. BUTTON HEAD M6 × 10mm × 2
4. BUTTON HEAD M6 × 20mm
5. BUTTON HEAD M6 × 20mm
6. BASE PLATE [L]
7. HEEL GUARD [L] (HG4)
8. STEP PLATE [L]
9. FOOT PEG BEARING COLLAR 12.5
10. FEMALE REVERSE ROD END M6
11. REVERSE JAM NUT M6 × 2
12. REVERSE STUD M6
13. SHIFT ROD 245
14. SHIFT PEDAL (SPD3)
15. PEG WASHER M8
16. FOOT PEG
17. PEDAL TIP DELRIN
18. FLANGE NUT M8
19. ROD END COLLAR 3
20. FOOT PEG END CAP



※ADJUST THE STOCK CHANGE ARM WHEN INSTALLING SATO REAR SETS.

# YZF-R6 '99-'02 (R)



1. STUD BOLT SHORT
2. SOCKET HEAD M8 × 15mm × 2
3. BUTTON HEAD M6 × 15mm × 2
4. BUTTON HEAD M8 × 30mm
5. BUTTON HEAD M6 × 20mm
6. PLAIN NUT M8 × 2
7. BASE PLATE [R]
8. STEP PLATE [R]
9. BRAKE ROD S35
10. BEARING COLLAR SUS
11. BRAKE PEDAL 180 (BPD2)
12. PLAIN WASHER M6
13. E CLIP M6
14. FOOT PEG
15. PEDAL TIP DELRIN
16. HEEL GUARD [R] (HG5)
17. FLAT HEAD M8 × 30mm
18. FLANGE NUT M8
19. PEG WASHER M8
20. MASTER STAY
21. FOOT PEG END CAP

VARIOUS POSITIONS

1	0mm	10mm Up
2	0mm	20mm Up
3	10mm Back	10mm Up
4	10mm Back	20mm Up
5	10mm Back	30mm Up
6	20mm Back	20mm Up
7	20mm Back	30mm Up
8	10mm Forward	10mm Up

All measurements are in relation to stock position (0 mm)