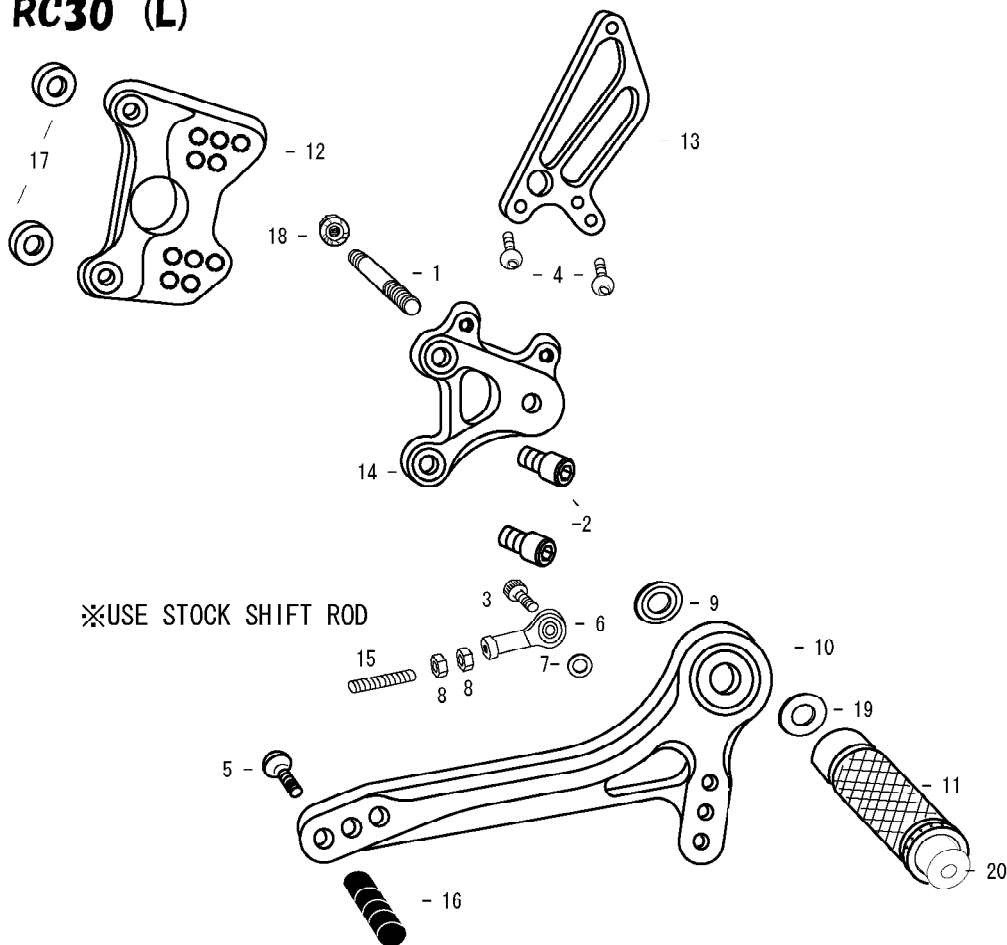


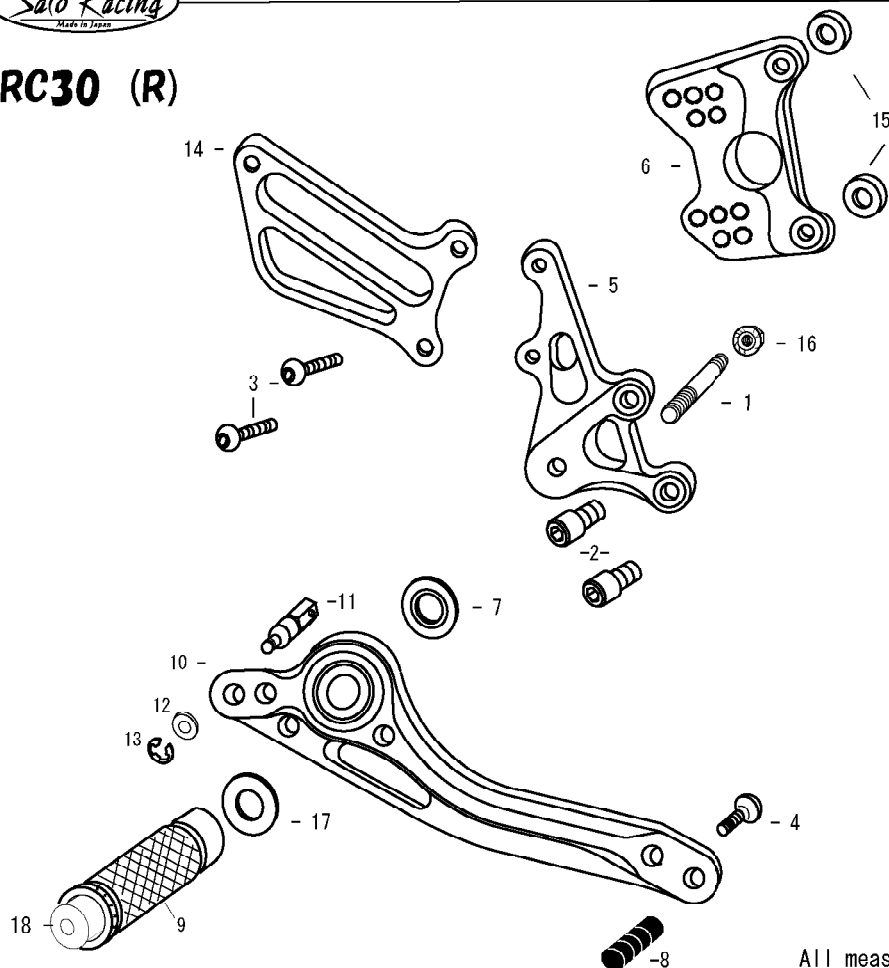
RC30 (L)



1. STUD BOLT SHORT
2. SOCKET HEAD M8 × 15mm × 2
3. SOCKET HEAD M6 × 20mm
4. BUTTON HEAD M6 × 10mm × 2
5. BUTTON HEAD M6 × 20mm
6. FEMALE ROD END M6
7. ROD END COLLAR 3
8. JAM NUT M6
9. BEARING COLLAR SUS
10. SHIFT PEDAL 60 (SPD1)
11. FOOT PEG
12. BASE PLATE [L]
13. HEEL GUARD [L] (HG6)
14. STEP PLATE [L]
15. STUD M6
16. PEDAL TIP DELRIN
17. BASE PLATE COLLAR 5 (BK) × 2
18. FLANGE NUT M8
19. PEG WASHER M8
20. FOOT PEG END CAP
- ※ SHIFT ROD 160 (OPTIONAL)



RC30 (R)



1. STUD BOLT SHORT
2. SOCKET HEAD M8 × 15mm × 2
3. BUTTON HEAD M6 × 25mm × 2
4. BUTTON HEAD M6 × 20mm
5. STEP PLATE [R]
6. BASE PLATE [R]
7. BEARING COLLAR SUS
8. PEDAL TIP DELRIN
9. FOOT PEG
10. BRAKE PEDAL 150 (BPD1)
11. BRAKE ROD M40
12. PLAIN WASHER M6
13. E CLIP M6
14. HEEL GUARD [R] (HG1)
15. BASE PLATE COLLAR 8 (BK) × 2
16. FLANGE NUT M8
17. PEG WASHER M8
18. FOOT PEG END CAP

POSITIONS		
1	0mm	10mm Up
2	0mm	20mm Up
3	10mm Back	10mm Up
4	10mm Back	20mm Up
5	20mm Back	20mm Up

All measurements are in relation to stock position (0 mm)