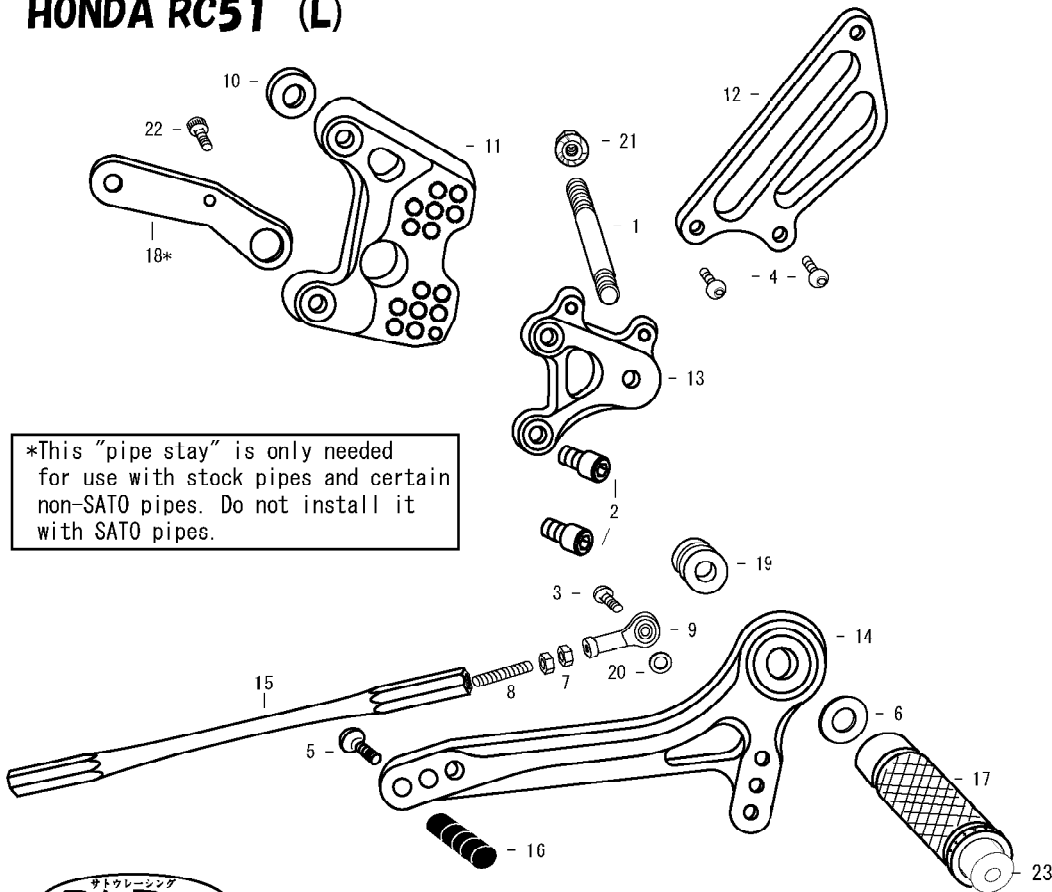


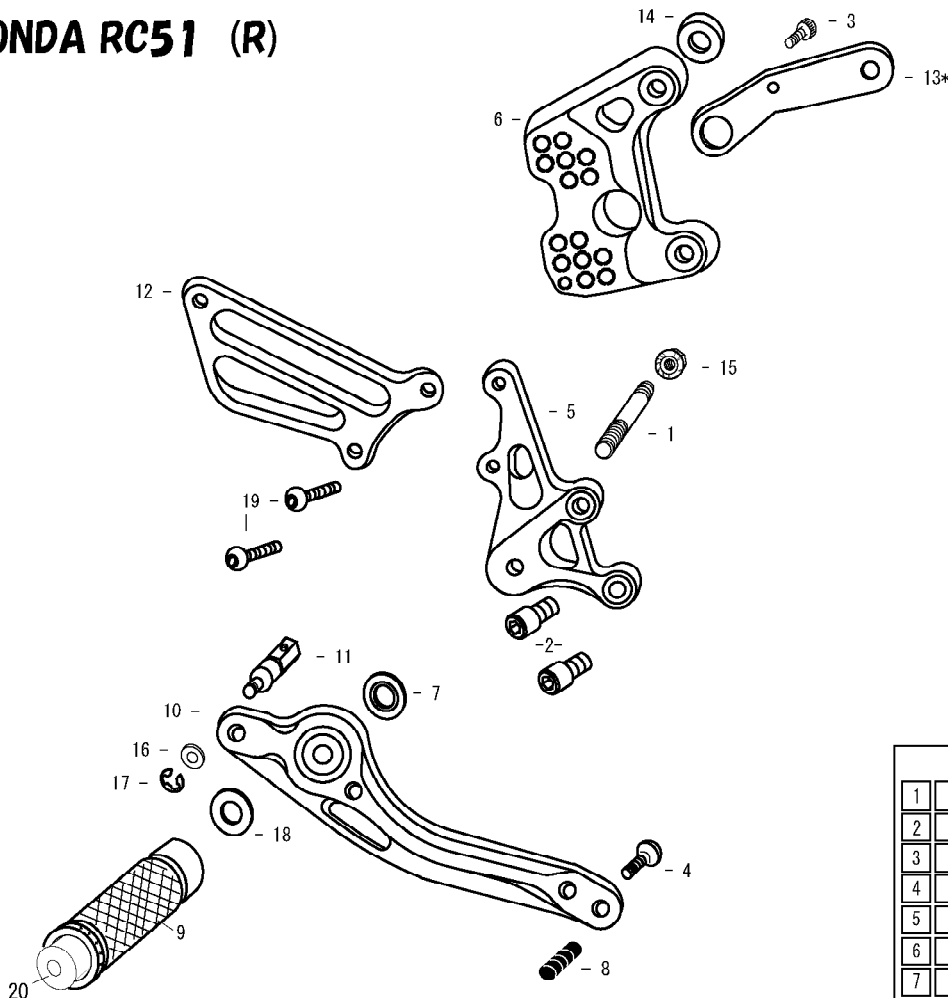
# HONDA RC51 (L)



1. STUD BOLT LONG
2. SOCKET HEAD M8×15mm ×2
3. BUTTON HEAD M6×20mm
4. BUTTON HEAD M6×10mm ×2
5. BUTTON HEAD M6×20mm
6. PEG WASHER M8
7. JAM NUT M6
8. STUD M6
9. FEMALE ROD END M6
10. BASE PLATE COLLAR 5 (BK)
11. BASE PLATE [L]
12. HEEL GUARD [L] (HG2)
13. STEP PLATE [L]
14. SHIFT PEDAL 60 (SPD1)
15. SHIFT ROD 170
16. PEDAL TIP DELRIN
17. FOOT PEG
18. PIPE STAY (BK)
19. FOOT PEG BEARING COLLAR 12.5
20. ROD END COLLAR 3
21. FLANGE NUT M8
22. SOCKET HEAD M6×15mm
23. FOOT PEG END CAP



# HONDA RC51 (R)



\*This "pipe stay" is only needed for use with stock pipes and certain non-SATO pipes. Do not install it with SATO pipes.

1. STUD BOLT SHORT
2. SOCKET HEAD M8×15mm ×2
3. SOCKET HEAD M6×15mm
4. BUTTON HEAD M6×20mm
5. STEP PLATE [R]
6. BASE PLATE [R]
7. BEARING COLLAR SUS
8. PEDAL TIP DELRIN
9. FOOT PEG
10. BRAKE PEDAL 165 (BPD3)
11. BRAKE ROD M40
12. HEEL GUARD [R] (HG1)
13. PIPE STAY (BK)
14. BASE PLATE COLLAR 6 (BK)
15. FLANGE NUT M8
16. PLAIN WASHER M6
17. E CLIP M6
18. PEG WASHER M8
19. BUTTON HEAD M6×25mm ×2
20. FOOT PEG END CAP

POSITIONS		
1	0mm	10mm Up
2	0mm	20mm Up
3	10mm Back	10mm Up
4	10mm Back	20mm Up
5	10mm Back	30mm Up
6	20mm Back	20mm Up
7	20mm Back	30mm Up

All measurements are in relation to stock position (0 mm)