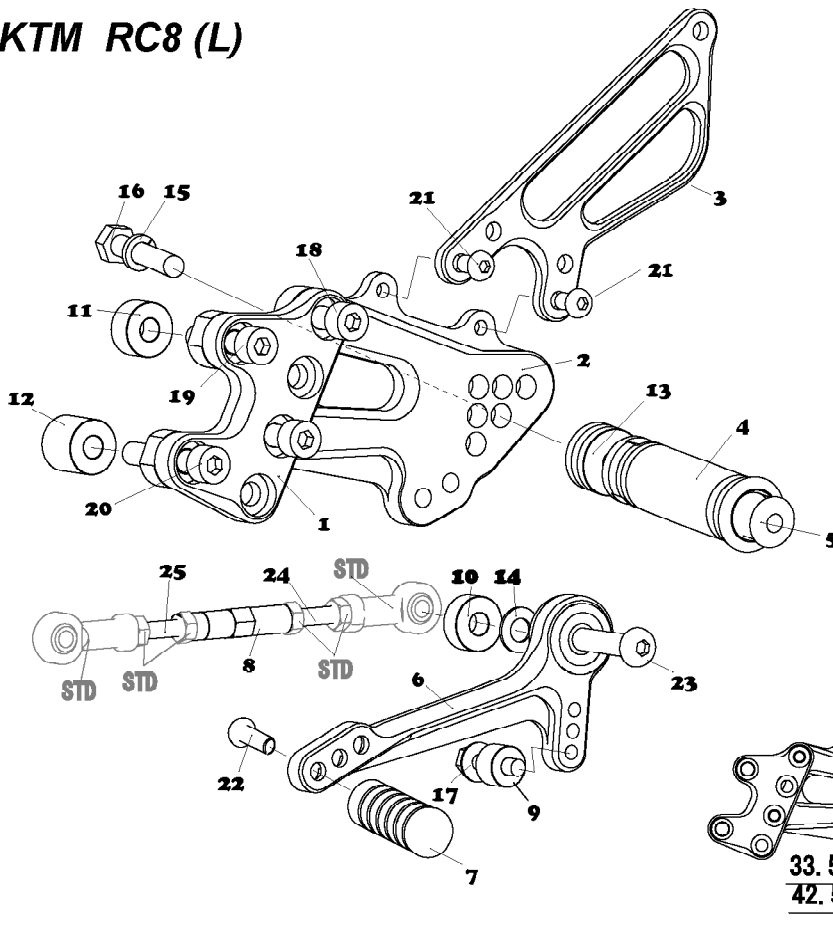
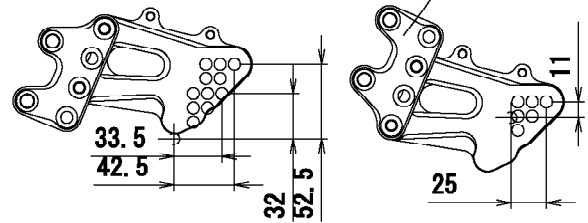


KTM RC8 (L)



1. BASE PLATE [L]
2. STEP PLATE [L]
3. HEEL GUARD [L] (HG14)
4. FOOT PEG
5. FOOT PEG END CAP
6. SHIFT PEDAL 65S (SPD9)
7. PEDAL TIP DELRIN
8. SHIFT ROD 40
9. COLLAR M6-10 (BK)
10. COLLAR M8-8 (BK)
11. COLLAR M8-10 (BK)
12. COLLAR M8-18 (BK)
13. FOOT PEG COLLAR 12
14. PEG WASHER M8
15. SPLIT WASHER M8
16. HEX BOLT M8×40
17. FLANGE HEAD M6×25
18. SOCKET HEAD M8×15 ×2
19. SOCKET HEAD M8×35
20. SOCKET HEAD M8×45
21. BUTTON HEAD M6×10 ×2
22. BUTTON HEAD M6×20
23. BUTTON HEAD M8×35
24. STUD M6×45
25. REVERSE STUD M6×45

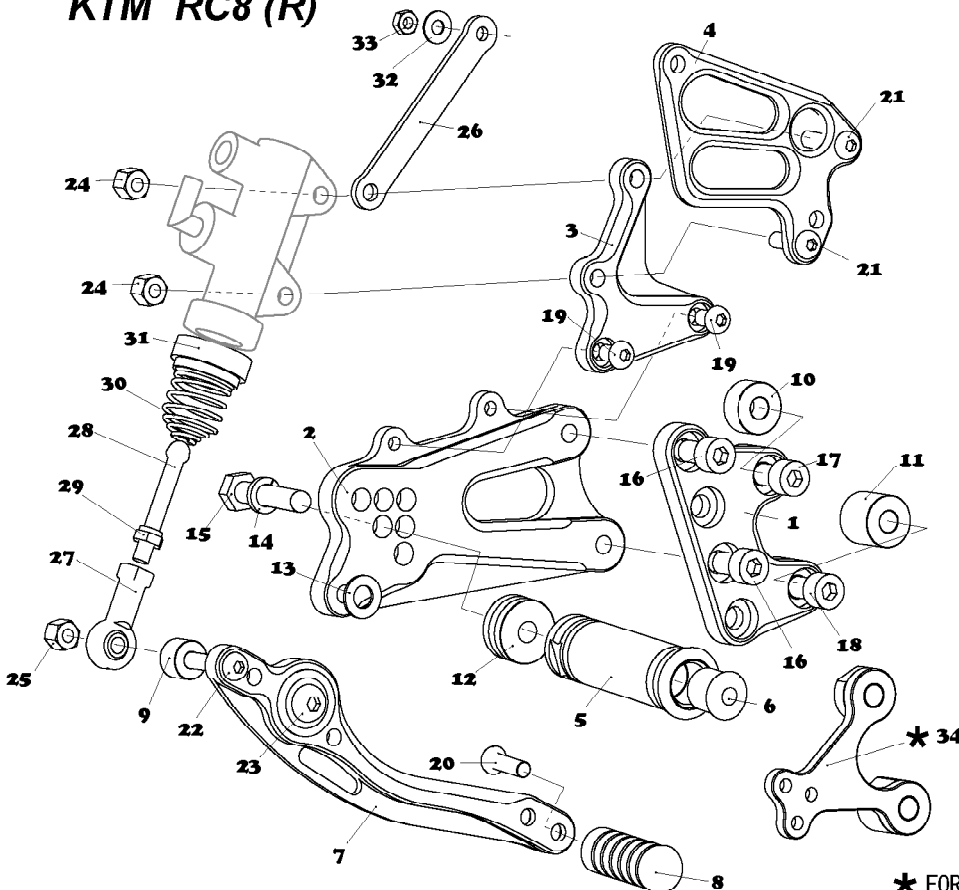
WHEN SWITCHING L&R BASE PLATE



All measurements are in relation to stock position (0 mm)



KTM RC8 (R)



1. BASE PLATE [R]
2. STEP PLATE [R]
3. MASTER STAY
4. HEEL GUARD [R] (HG20)
5. FOOT PEG
6. FOOT PEG END CAP
7. BRAKE PEDAL 180 (BPD2)
8. PEDAL TIP DELRIN
9. COLLAR M6-10 (BK)
10. COLLAR M8-10 (BK)
11. COLLAR M8-18 (BK)
12. FOOT PEG COLLAR 12
13. PEG WASHER M8
14. SPLIT WASHER M8
15. HEX BOLT M8×40
16. SOCKET HEAD M8×15 ×2
17. SOCKET HEAD M8×35
18. SOCKET HEAD M8×45
19. BUTTON HEAD M6×10 ×2
20. BUTTON HEAD M6×20
21. BUTTON HEAD M6×30 ×2
22. BUTTON HEAD M6×35
23. BUTTON HEAD M8×25
24. PLAIN NUT M6 ×2
25. LOCK NUT M6
26. UNIVERSAL BRACKET M6-75 (BK)
27. FEMALE ROD END M6
28. PUSH ROD
29. SPRING COLLAR M6
30. RETURN SPRING 40
31. RETURN SPRING COLLAR (BK)
32. WASHER M5
33. PLAIN NUT M5
34. FAIRING STAY (OPTION)

* FOR AKRAPOVIC EXHAUST SYSTEM, REPLACE #10 & #11 WITH #34.