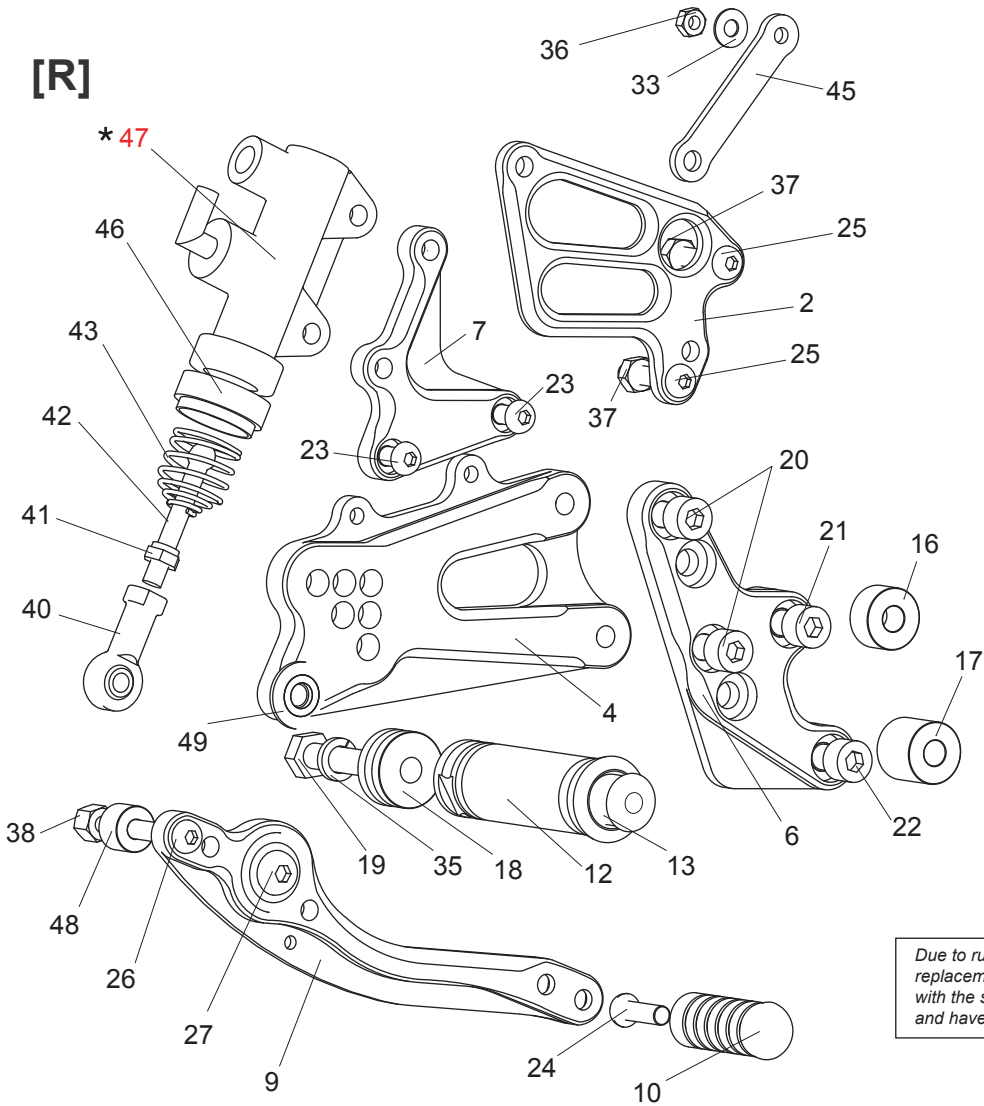


KTM RC8/ R REAR SETS - RACING VERSION

(part# KTM-RC8RARS)

[R]



- 2. (R) HEEL GUARD [HG-20R]
- 4. (R) STEP PLATE [KTM-RC8SP-R]
- 6. (R) BASE PLATE [KTM-RC8RABP-R]
- 7. MASTER BASE [KTM-RC8MB]
- 9. BRAKE PEDAL 180b [BPD-2]
- 10. PEDAL TIP (DELRIN) [ST-001D]
- 12. FOOT PEG [PEG]
- 13. FOOT PEG END CAP [ST-002]
- 16. COLLAR 10-8 (BK) [BPCLR-10]
- 17. COLLAR 18-8 (BK) [BPCLR-18]
- 18. FOOT PEG COLLAR 12 [PEGCLR-12]
- 19. HEX HEAD M8-40mm [HBT-M840]
- 20. SOCKET HEAD M8-16mm [SBT-M816] x2
- 21. SOCKET HEAD M8-35mm [SBT-M835]
- 22. SOCKET HEAD M8-45mm [SBT-M845]
- 23. BUTTON HEAD M6-10mm [BBT-M610] x2
- 24. BUTTON HEAD M6-20mm [BBT-M620]
- 25. BUTTON HEAD M6-30mm [BBT-M630] x2
- 26. BUTTON HEAD M6-35mm [BBT-M635]
- 27. BUTTON HEAD M8-25mm [BBT-M825]
- 33. WASHER M5 [WS-5]
- 35. SPLIT WASHER M8 [SWS-8]
- 36. NUT M5 [NUT-5]
- 37. NUT M6 [NUT-6] x2
- 38. LOCK NUT M6 [LNT-6]
- 40. FEMALE ROD END M6 [RDED-F6]
- 41. SPRING SEAT [SPS-6]
- 42. PUSH ROD [PRD]
- 43. RETURN SPRING 40 [RS-RSP]
- 45. UNIVERSAL BRACKET M6-50(BK) [UB-M650]
- 46. RETURN SPRING COLLAR [RS-RSCLR]
- * 47. REAR MASTER CYLINDER(OEM)
- 48. COLLAR 10-6 (BK) [RDED-CLR10]
- 49. BEARING COLLAR SUS [BGCLR-SUS]

Due to running improvements in the designs of Sato parts, some new replacement parts may look somewhat different than the original parts with the same part #. These slight differences are mostly cosmetic and have no effect on performance.

- 1. (L) HEEL GUARD [HG-14L]
- 3. (L) STEP PLATE [KTM-RC8SP-L]
- 5. (L) BASE PLATE [KTM-RC8RABP-L]
- 8. SHIFT PEDAL 65-75 [SPD-0912]
- 10. PEDAL TIP (DELRIN) [ST-001D]
- 11. SHIFT ROD 90 [SRD-90]
- 12. FOOT PEG [PEG]
- 13. FOOT PEG END CAP [ST-002]
- 14. PEG BEARING COLLAR 8S(BK) [PEGBGCLR-8SB]
- 15. ROD END COLLAR 6(GD) [RDEDCLR-6]
- 16. COLLAR 10-8 (BK) [BPCLR-10]
- 17. COLLAR 18-8 (BK) [BPCLR-18]
- 18. FOOT PEG COLLAR 12 [PEGCLR-12]
- 19. HEX HEAD M8-40mm [HBT-M840]
- 20. SOCKET HEAD M8-16mm [SBT-M816] x2
- 21. SOCKET HEAD M8-35mm [SBT-M835]
- 22. SOCKET HEAD M8-45mm [SBT-M845]
- 23. BUTTON HEAD M6-10mm [BBT-M610] x2
- 24. BUTTON HEAD M6-20mm [BBT-M620]
- 28. BUTTON HEAD M8-35mm [BBT-M835]
- 29. SOCKET HEAD M6-22mm [SBT-M622]
- 30. STUD M6 [STUD-M6]
- 31. JAM NUT M6 [JNT-6] x2
- 32. REVERSE JAM NUT M6 [JNT-6L]
- 35. SPLIT WASHER M8 [SWS-8]
- 39. MALE REVERSE ROD END M6 [RDED-M6L]
- 40. FEMALE ROD END M6 [RDED-F6]

[L]

