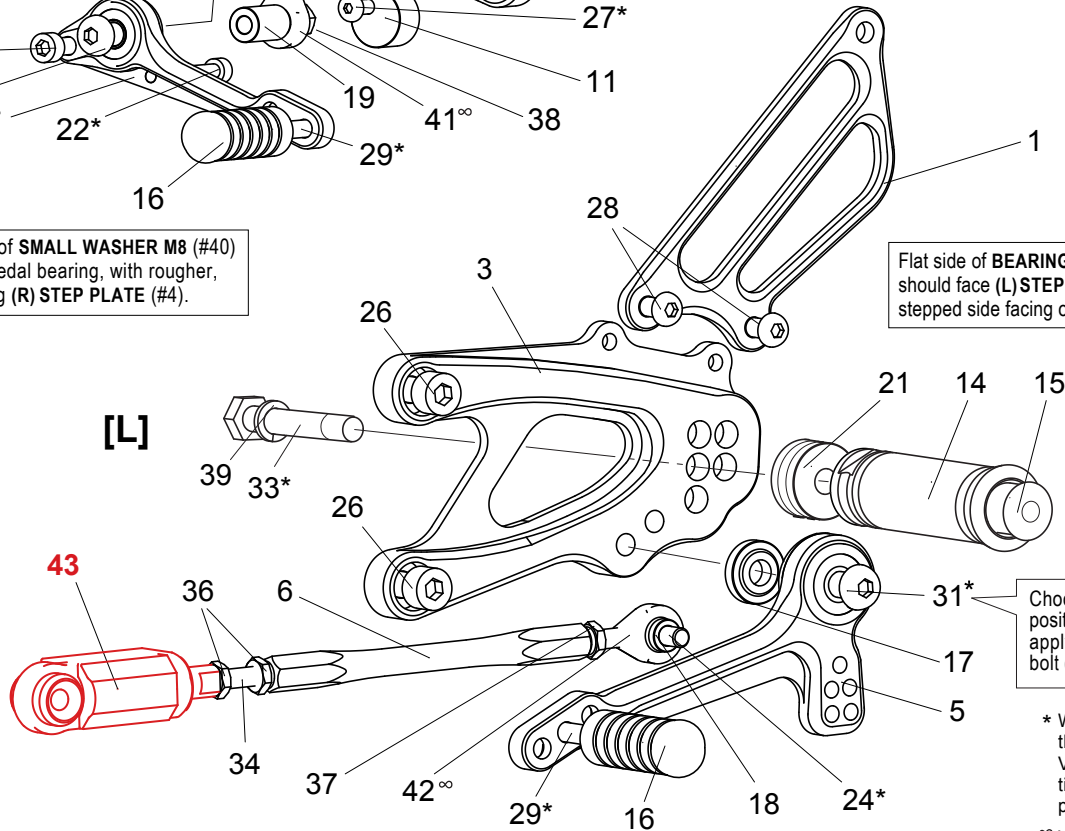


Smooth front of **SMALL WASHER M8 (#40)** should face pedal bearing, with rougher, flat side facing (R) **STEP PLATE (#4)**.

Flat side of **BEARING COLLAR 5S (#17)** should face (L) **STEP PLATE (#3)**, with the stepped side facing out towards pedal bearing.



Choose from the two mounting positions for the shift pedal, then apply some threadlocker to the bolt (#31) before final tightening.

* We recommend applying some threadlocker (such as Loctite or Vibra Tite) to these bolts before tightening. (Some pre-assembled parts have already been Loctited).

∞ Lubricate regularly.

1. (L) HEEL GUARD [HG-2L]
2. (R) HEEL GUARD [HG-22R]
3. (L) STEP PLATE [A-RSV413SP-L]
4. (R) STEP PLATE [A-RSV413SP-R]
5. SHIFT PEDAL [SPD-0912]
6. SHIFT ROD 120 [SRD-120]
7. BRAKE PEDAL [BPD-15]
8. MASTER STAY [A-RSV413MS]
9. PUSH ROD 80 [PRD-80]
10. CANISTER BRACKET (BK) [CANBT-ARSV413]
11. PEDAL STOPPER 12.5 (DELRIN) [PSTOPPER-12.5]
12. PULL SWITCH STAY 14 [PSTAY-14]
13. BRAKE SWITCH EXTENSION

14. FOOT PEG [PEG] x2
15. FOOT PEG END CAP [ST-002] x2
16. PEDAL TIP (DELRIN) [ST-001D] x2
17. BEARING COLLAR 5S(BK) [PEGBGCLR-5SB]
18. ROD END COLLAR 3(GD) [RDED-CLR3]
19. COLLAR 20-6(BK) [RDED-CLR20]
20. COLLAR 5-18.5(BK) [CLR-5-18.5]
21. PEG COLLAR 12 [PEGCLR-12] x2
22. SOCKET HEAD M5×40mm [SBT-M540]
23. SOCKET HEAD M6×10mm [SBT-M610]
24. SOCKET HEAD M6×20mm [SBT-M620]
25. SOCKET HEAD M6×45mm [SBT-M645]
26. SOCKET HEAD M8×20mm [SBT-M820] x4
27. BUTTON HEAD M5×18mm [BBT-M518]
28. BUTTON HEAD M6×10mm [BBT-M610] x4

29. BUTTON HEAD M6×20mm [BBT-M620] x4
30. BUTTON HEAD M8×25mm [BBT-M825]
31. BUTTON HEAD M8×30mm [BBT-M830]
32. HEX BOLT M5×8mm [HBT-M58]
33. HEX BOLT M8×40mm [HBT-M840] x2
34. STUD M6 [STUD-M6]
35. NUT M5 [NUT-5]
36. JAM NUT M6 [JNT-6] x3
37. REVERSE JAM NUT M6 [JNT-6L]
38. LOCK NUT M6 [LNT-6]
39. SPLIT WASHER M8 [SWS-8] x2
40. SMALL WASHER M8 [PWS-8]
41. MALE ROD END M6 [RDED-M6]
42. MALE REVERSE ROD END M6 [RDED-M6L]

STOCK PARTS -
43. SHIFTER SWITCH
44. BRAKE SWITCH