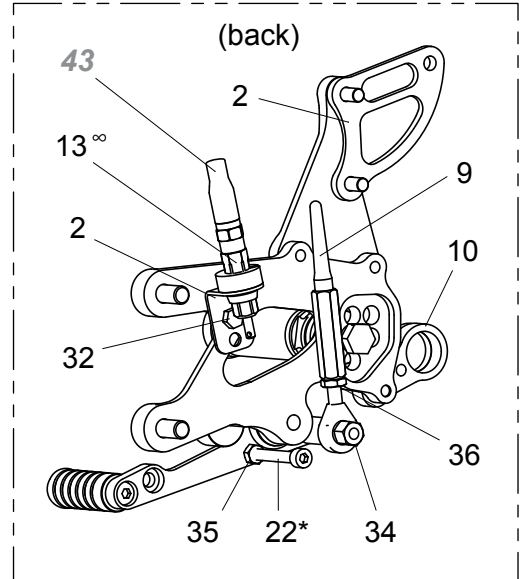
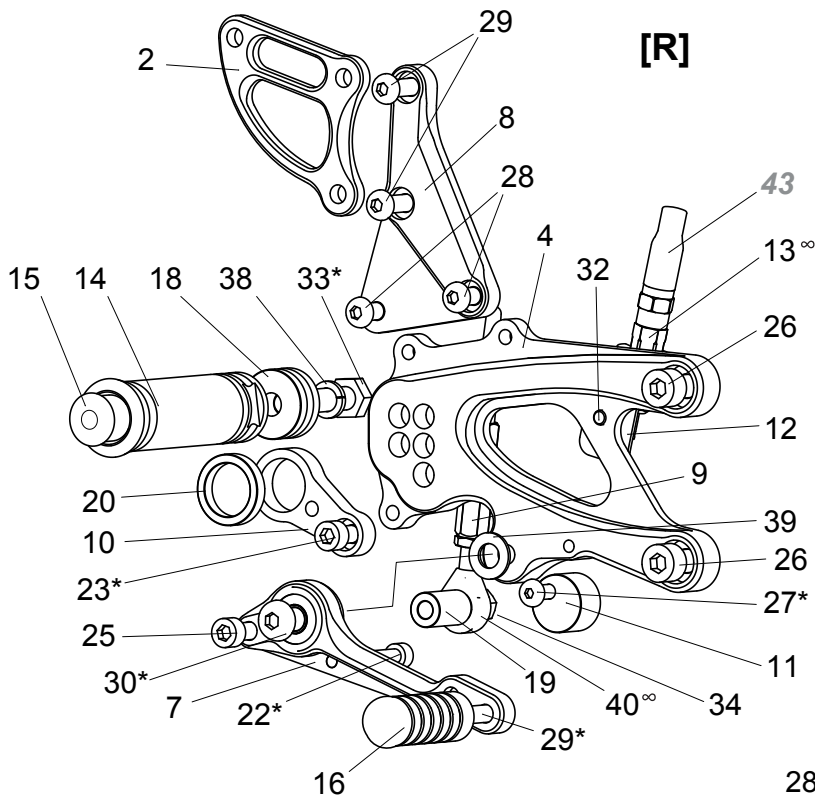


RSV4 (R/FACTORY) APRC ABS '13- / TUONO V4R APRC ABS '13- REVERSE SHIFT REAR SETS

[A-RSV413RSR]

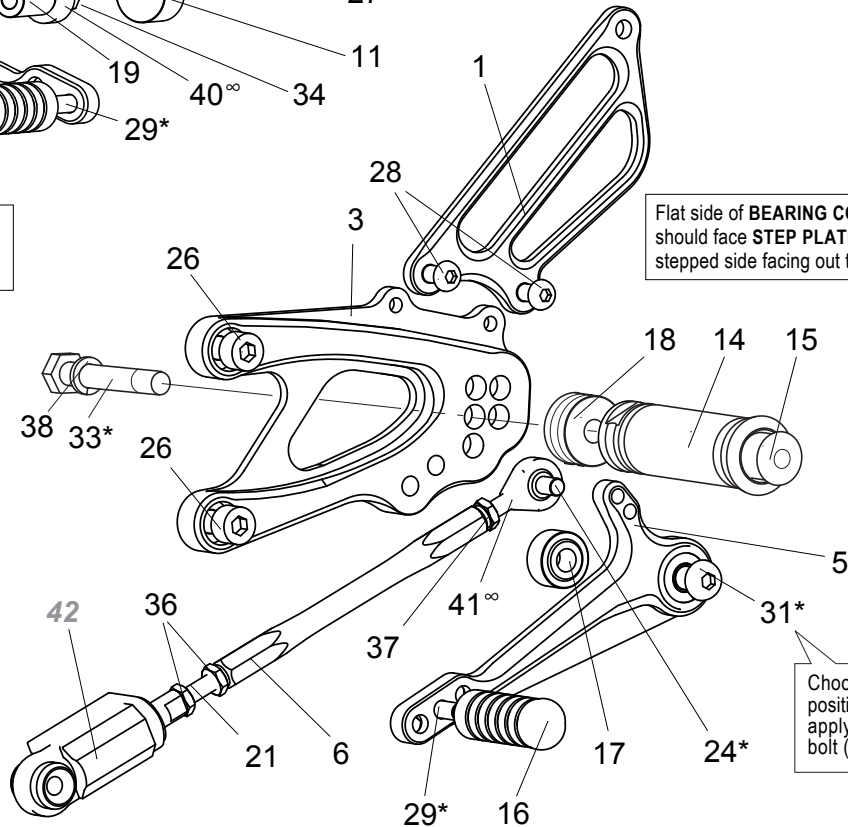


satoracing.com

Smooth front of **SMALL WASHER M8 (#39)** should face pedal bearing, with rougher, flat side facing **STEP PLATE [R] (#4)**.

Flat side of **BEARING COLLAR 10S (#17)** should face **STEP PLATE [L] (#3)**, with the stepped side facing out towards pedal bearing.

[L]



Choose from the two mounting positions for the shift pedal, then apply some threadlocker to the bolt (#31) before final tightening.

- | | | | |
|----------------------------------|------------------------------|----------------------------|---------------------------------|
| 1. [L] HEEL GUARD [HG-2L] | 12. PULL SWITCH STAY 14 | 23. SOCKET HEAD M6×10 | 34. LOCK NUT M6 |
| 2. [R] HEEL GUARD [HG-22R] | 13. BRAKE SWITCH EXTENSION | 24. BUTTON HEAD M6×18 | 35. NUT M5 |
| 3. STEP PLATE [L] | 14. FOOT PEG (x2) | 25. SOCKET HEAD M6×45 | 36. JAM NUT M6 (x3) |
| 4. STEP PLATE [R] | 15. FOOT PEG END CAP (x2) | 26. SOCKET HEAD M8×20 (x4) | 37. REVERSE JAM NUT M6 |
| 5. SHIFT PEDAL [SCP70] | 16. PEDAL TIP (DELTRIN) (x2) | 27. BUTTON HEAD M5×18* | 38. SPLIT WASHER M8 (x2) |
| 6. SHIFT ROD 120 | 17. BEARING COLLAR 10S (BK) | 28. BUTTON HEAD M6×10 (x4) | 39. SMALL WASHER M8 |
| 7. BRAKE PEDAL [BPD-15] | 18. PEG COLLAR 12 (x2) | 29. BUTTON HEAD M6×20 (x4) | 40. MALE ROD END M6 |
| 8. MASTER STAY | 19. COLLAR 20-6 (BK) | 30. BUTTON HEAD M8×25 | 41. MALE REVERSE ROD END M6 |
| 9. PUSH ROD 80 | 20. COLLAR 5-18.5 (BK) | 31. BUTTON HEAD M8×35 | 42. SHIFTER SWITCH (STOCK PART) |
| 10. CANISTER BRACKET (BK) | 21. STUD M6 | 32. HEX BOLT M5×8 | 43. BRAKE SWITCH (STOCK PART) |
| 11. PEDAL STOPPER 12.5 (DELTRIN) | 22. SOCKET HEAD M5×40 | 33. HEX BOLT M8×40 (x2) | |

* We recommend applying some threadlocker (such as Loctite or Vibra Tite) on these bolts. ∞ Lubricate regularly.