

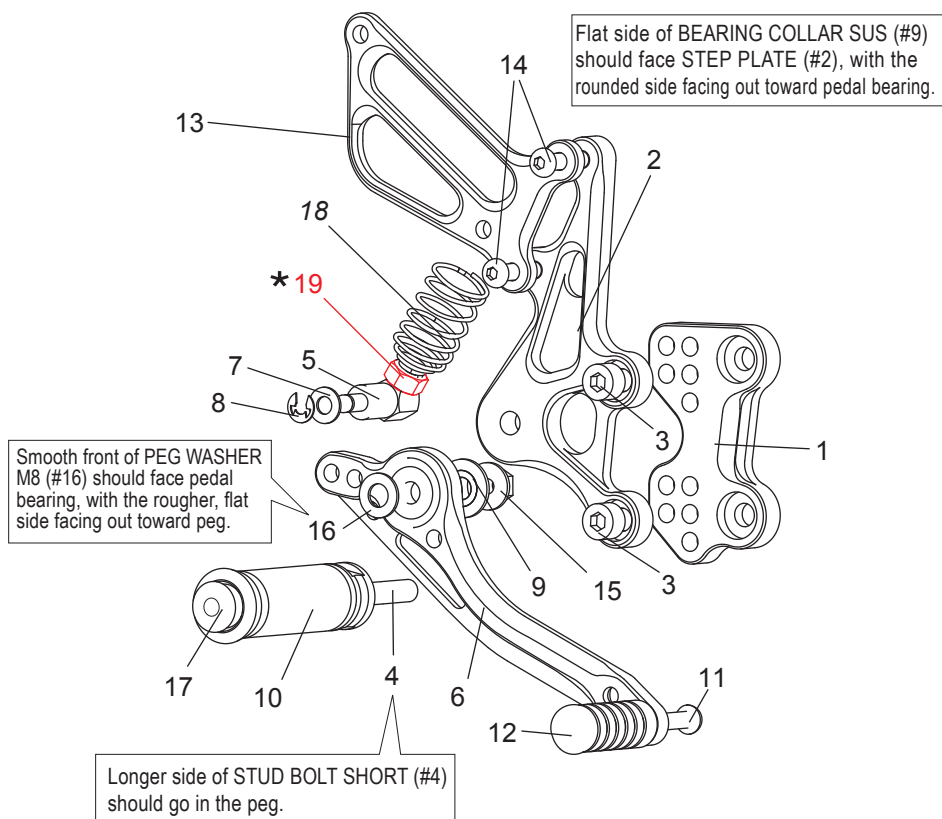
[L] SIDE

1. (L) BASE PLATE [S-GSXP-L]
2. (L) HEEL GUARD [HG-2L]
3. BUTTON HEAD M6-10mm [BBT-M610] x2
4. STUD BOLT LONG (M8-65mm) [STBT-L]
5. (L) STEP PLATE [S-GSXSP-L]
6. SOCKET HEAD M8-15mm [SBT-M815] x2
7. FOOT PEG BEARING COLLAR 12.5 [PEGBGCLR-125]
8. SHIFT PEDAL 60-70 [SPD0102]
9. PEG WASHER M8 [PWS-8]
10. FOOT PEG [PEG]
11. BUTTON HEAD M6-20mm [BBT-M620]
12. MALE REVERSE ROD END M6 [RDED-M6L]
13. ROD END COLLAR 3(GD) [RDEDCLR-3]
14. REVERSE JAM NUT M6 [JNT-6L]
15. PEDAL TIP (DELRIN) [ST-001D]
16. BUTTON HEAD M6-20mm [BBT-M620]
17. SHIFT ROD 150 [SRD-150]
18. JAM NUT M6 [JNT-6] x2
19. STUD M6 [STUD-M6]
20. FLANGE NUT M8 [FNT-8]
21. FOOT PEG END CAP [ST-002]

Due to running improvements in the designs of Sato parts, some new replacement parts may look somewhat different than the original parts with the same part #. These slight differences are mostly cosmetic and have no effect on performance.

※ADJUST THE STOCK CHANGE ARM WHEN INSTALLING SATO REAR SETS.

[R] P-1.0 brake light switch is included with this Rear Sets kit. Some later Suzuki models require a P-1.25 brake light switch.



[R] SIDE

1. (R) BASE PLATE [S-GSXP-R]
2. (R) STEP PLATE [S-GSXSP-R]
3. SOCKET HEAD M8-15mm [SBT-M815] x2
4. STUD BOLT SHORT (M8-55mm) [STBT-S]
5. BRAKE ROD M40 [BRD-M40]
6. BRAKE PEDAL 150 [BPD-1]
7. PLAIN WASHER M6 [WS-6]
8. E CLIP M6 [ECP-6]
9. BEARING COLLAR SUS [BGCLR-SUS]
10. FOOT PEG [PEG]
11. BUTTON HEAD M6-20mm [BBT-M620]
12. PEDAL TIP (DELRIN) [ST-001D]
13. (R) HEEL GUARD [HG-1R]
14. BUTTON HEAD M6-25mm [BBT-M625] x2
15. FLANGE NUT M8 [FNT-8]
16. PEG WASHER M8 [PWS-8]
17. FOOT PEG END CAP [ST-002]
18. RETURN SPRING [RS-RSP] (Option)
- ★ 19. NUT M8(STOCK)

POSITIONS

1	0mm	35mm Up
2	0mm	25mm Up
3	0mm	15mm Up
4	10mm Back	35mm Up
5	10mm Back	25mm Up

All measurements are in relation to stock position (0 mm)