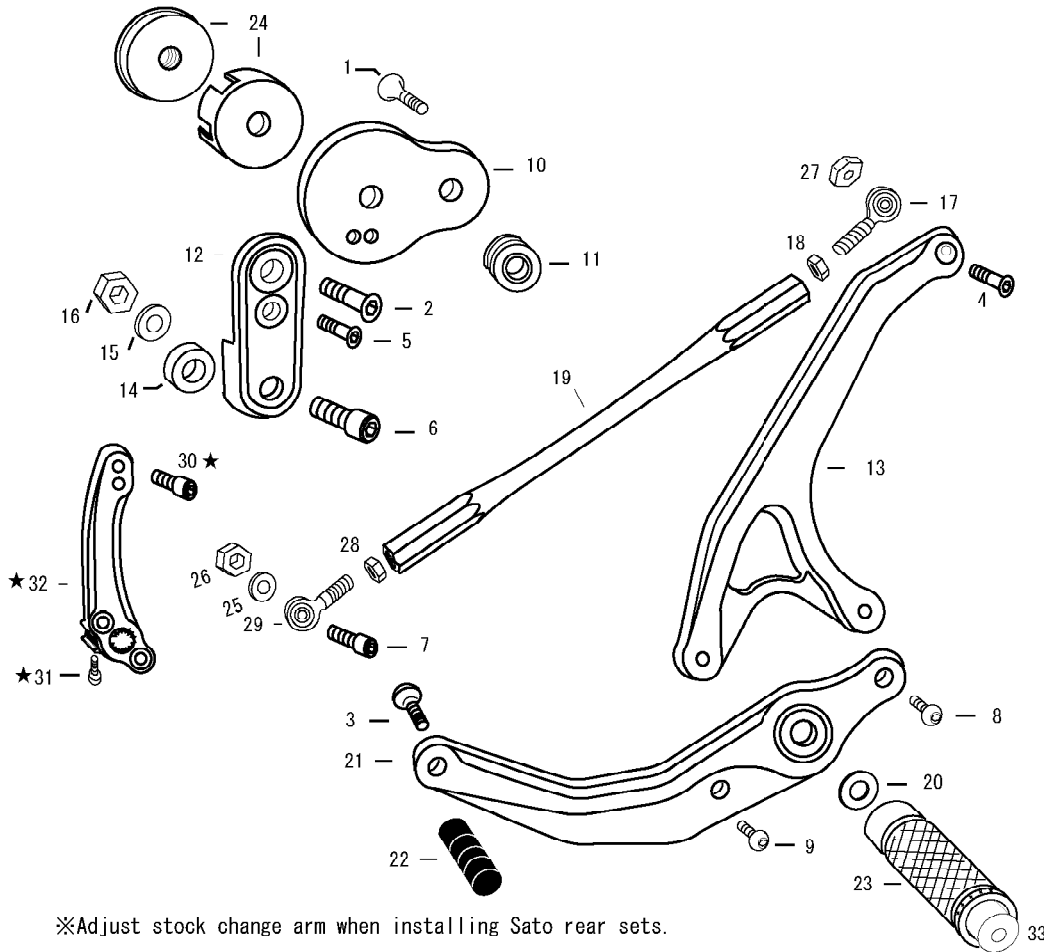


# Buell S1W/X1 (L)

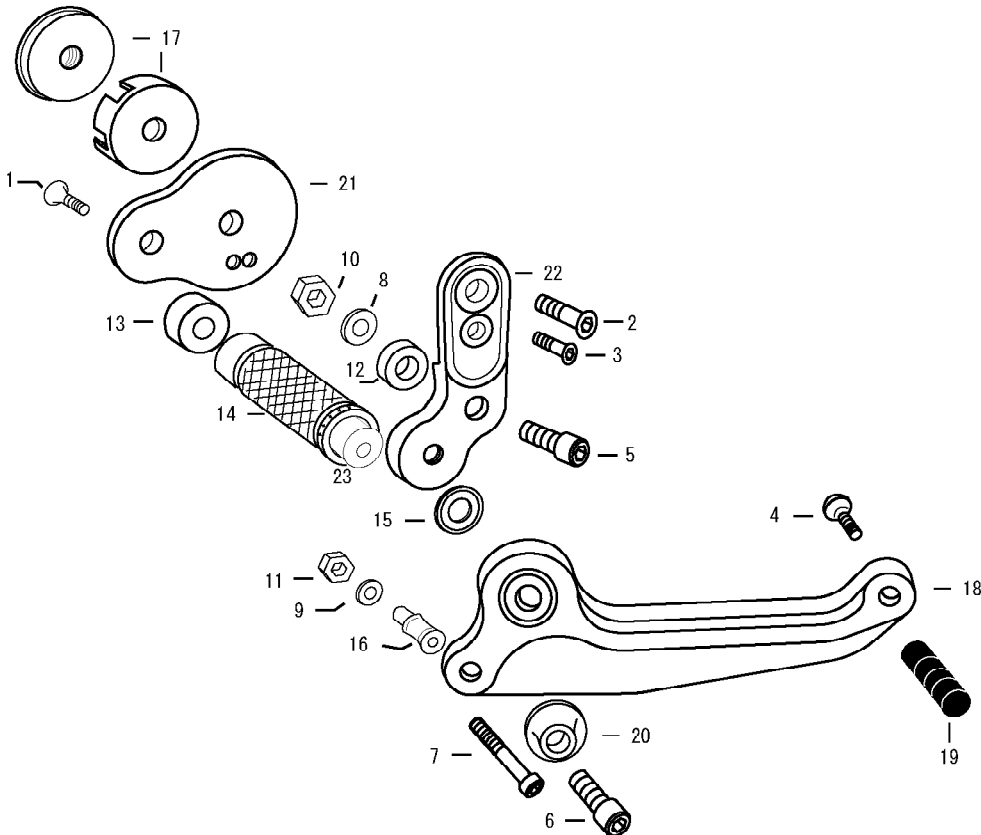


1. FLAT HEAD M8 × 55mm
2. FLAT HEAD M8 × 30mm
3. BUTTON HEAD M6 × 25mm
4. BUTTON HEAD M6 × 20mm
5. FLAT HEAD M6 × 15mm
6. SOCKET HEAD M8 × 35mm
7. SOCKET HEAD M6 × 35mm
8. BUTTON HEAD M6 × 15mm
9. BUTTON HEAD M6 × 10mm
10. STEP PLATE [L]
11. FOOT PEG BEARING COLLAR 18
12. BASE PLATE [L]
13. SHIFT ARM
14. BASE PLATE COLLAR 6 (for X1)  
BASE PLATE COLLAR 8 (for S1W)
15. PLAIN WASHER M8
16. PLAIN NUT M8
17. MALE ROD END M6
18. JAM NUT M6
19. SHIFT ROD 230
20. PEG WASHER M8
21. SHIFT PEDAL
22. PEDAL TIP DELRIN
23. FOOT PEG
24. FRAME MOUNT STAY
25. PLAIN WASHER M6
26. PLAIN NUT M6
27. JAM NUT M6
28. MALE REVERSE ROD END M6
29. REVERSE JAM NUT M6
- ★ 30. SOCKET HEAD M6 × 30mm (OPTION)
- ★ 31. SHIFT ARM (OPTION)
- ★ 32. SOCKET HEAD M6 × 20mm (OPTION)
33. FOOT PEG END CAP

※Adjust stock change arm when installing Sato rear sets.



# Buell S1W/X1 (R)



1. FLAT HEAD M8 × 30mm
2. FLAT HEAD M8 × 30mm
3. FLAT HEAD M6 × 15mm
4. BUTTON HEAD M6 × 25mm
5. SOCKET HEAD M8 × 35mm
6. SOCKET HEAD M8 × 30mm
7. SOCKET HEAD M6 × 50mm
8. PLAIN WASHER M8
9. PLAIN WASHER M6
10. PLAIN NUT M8
11. PLAIN NUT M6
12. BASE PLATE COLLAR 6 (for X1)  
BASE PLATE COLLAR 8 (for S1W)
13. FOOT PEG COLLAR 12
14. FOOT PEG
15. BEARING COLLAR SUS
16. BRAKE ROD COLLAR
17. FRAME MOUNT STAY
18. BRAKE PEDAL
19. PEDAL TIP DELRIN
20. BEARING BOLT COVER
21. STEP PLATE [R]
22. BASE PLATE STAY [R]
23. FOOT PEG END CAP

POSITIONS		
1	30mm Back	50mm Up
2	20mm Back	60mm Up