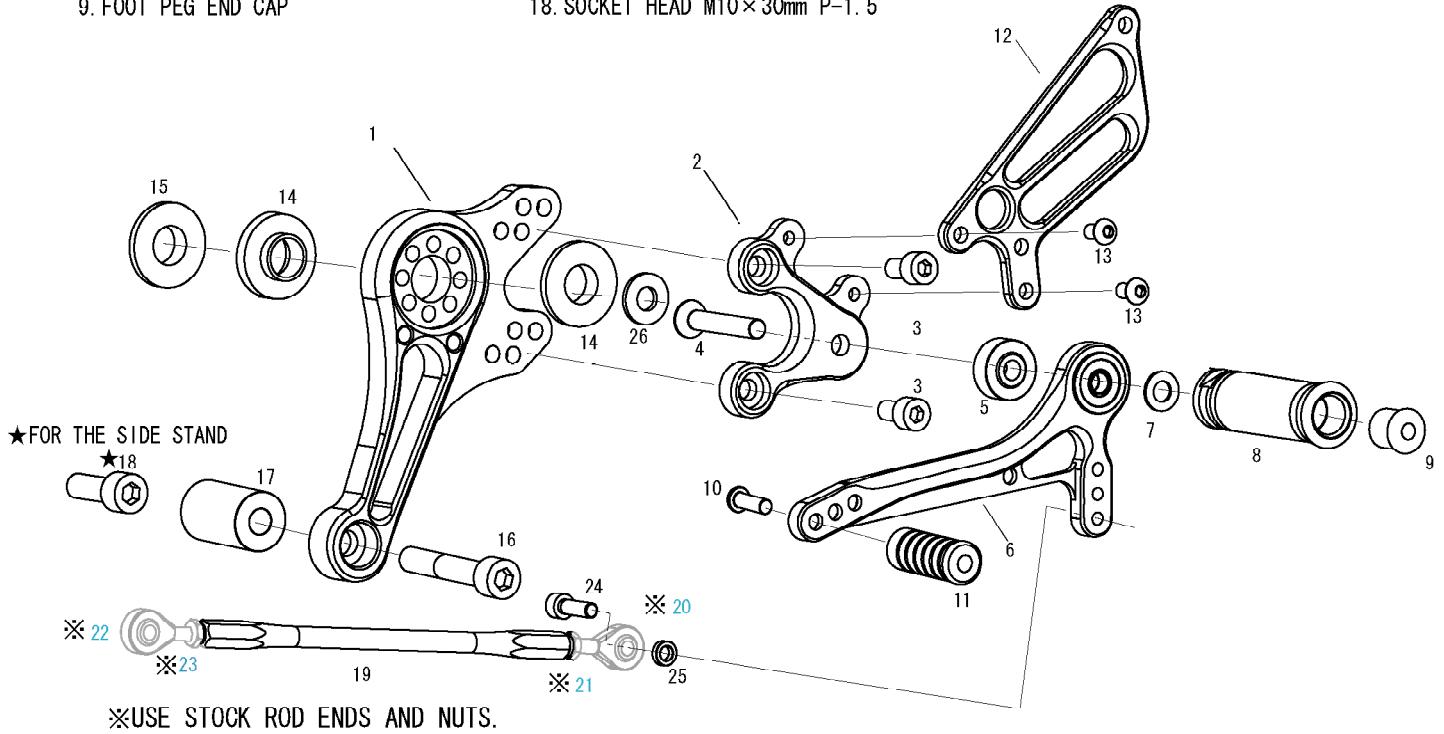


DUCATI S2R/S4R Ver. 2 (L)

1. BASE PLATE [L]
2. STEP PLATE [L]
3. SOCKET HEAD M8×15mm ×2
4. FLAT HEAD M8×45mm
5. FOOT PEG BEARING COLLAR 10
6. SHIFT PEDAL 70 (SPD2)
7. PEG WASHER M8
8. FOOT PEG
9. FOOT PEG END CAP

10. BUTTON HEAD M6×20mm
11. PEDAL TIP DELRIN
12. HEEL GUARD [L] (HG6)
13. BUTTON HEAD M6×10mm ×2
14. COLLAR 3.5 DELRIN (PRE-INSTALLED) ×2
15. COLLAR 7.5 (BK)
16. SOCKET HEAD M10×60mm P-1.5
17. COLLAR 40 (BK)
18. SOCKET HEAD M10×30mm P-1.5

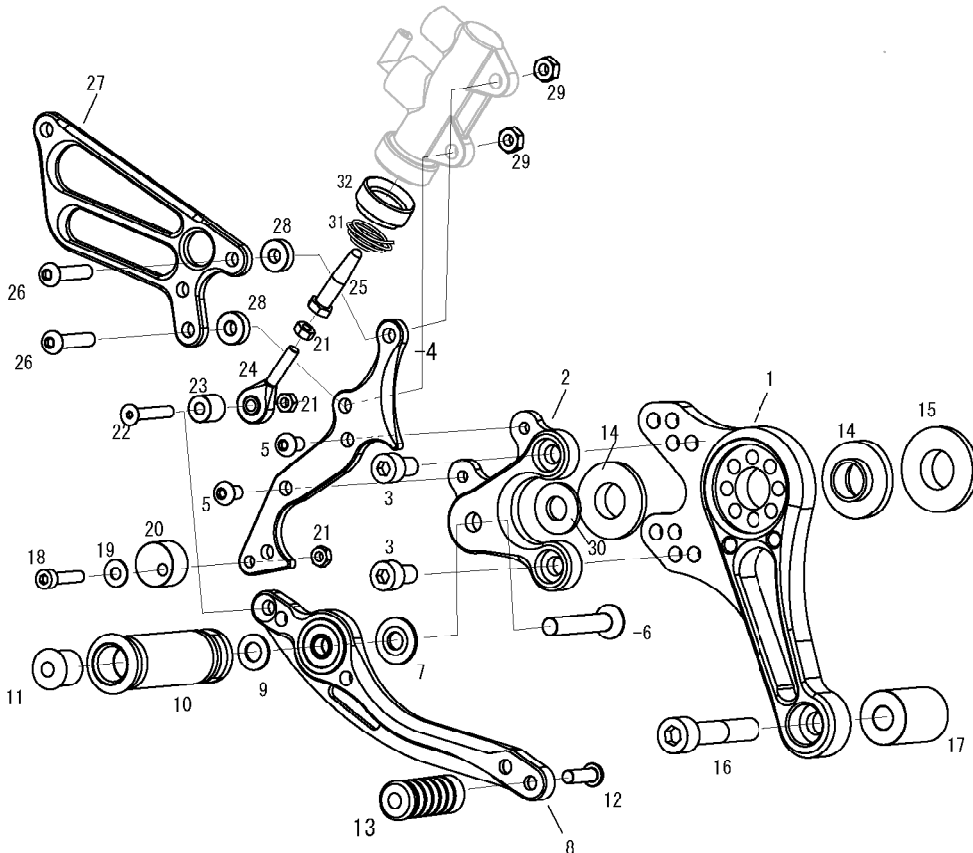
19. SHIFT ROD 180
- ※20. (REVERSE ROD END)
- ※21. (REVERSE NUT)
- ※22. (ROD END)
- ※23. (NUT)
24. SOCKET HEAD M6×20mm
25. ROD END COLLAR 3
26. WASHER M12



ADJUST THE STOCK CHANGE ARM WHEN INSTALLING SATO REAR SETS.



DUCATI S2R/S4R Ver. 2 (R)



1. BASE PLATE [R]
2. STEP PLATE [R]
3. SOCKET HEAD M8×15mm ×2
4. MASTER STAY
5. BUTTON HEAD M6×10mm ×2
6. FLAT HEAD M8×45mm
7. BEARING COLLAR SUS
8. BRAKE PEDAL 180-2 (BPD6)
9. PEG WASHER M8
10. FOOT PEG
11. FOOT PEG END CAP
12. BUTTONE HEAD M6×20mm
13. PEDAL TIP DELRIN
14. COLLAR 3.5 DELRIN (PRE-INSTALLED) ×2
15. COLLAR 7.5 (BK)
16. SOCKET HEAD M10×55mm P-1.5
17. COLLAR 35 (BK)
18. SOCKET HEAD M5×25mm
19. PLAIN WASHER M5
20. PEDAL STOPPER DELRIN
21. PLAIN NUT M5×3
22. FLAT HEAD M5×35mm
23. ROD END COLLAR 12
24. MALE ROD END M5
25. PUSH ROD
26. BUTTON HEAD M6×30mm ×2
27. HEEL GUARD [R] (HG6)
28. HEEL GUARD COLLAR 5 (BK) ×2
29. NUT M6 ×2
30. WASHER M12
31. RETURN SPRING S
32. RETURN SPRING COLLAR (BK)